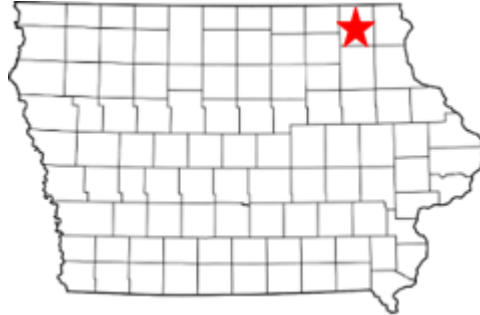


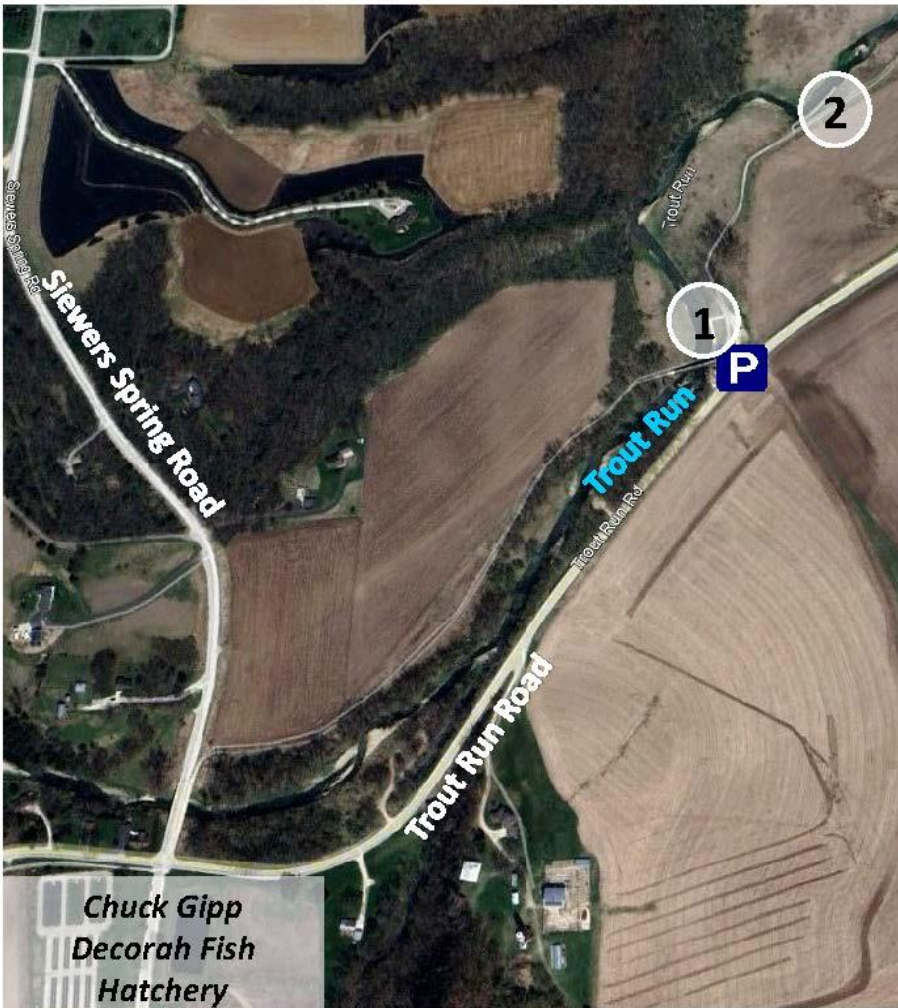
Accessible Trout Fishing

Trout Run

(Decorah, Winneshiek County)



Iowa Department of Natural Resources
Chuck Gipp Decorah Fish Hatchery
2325 Siewers Spring Rd
Decorah, IA 52101
(563) 382-8324



Two accessible fishing locations are provided for anglers along Trout Run, in addition to those provided at the Chuck Gipp Decorah Fish Hatchery.

From the Chuck Gipp Decorah Fish Hatchery, turn right onto Trout Run Road and travel about 0.7 miles until you arrive at the parking area next to the brown walking trail bridge. A gravel parking area provides access to Trout Run Trail, a paved recreational trail that travels along Trout Run, and connects two accessible fishing sites.



Site 1- Sixty feet of paved walkway connects this fishing access site to Trout Run Trail and the gravel parking area.



Site 2- Anglers can get close to some very nice trout habitat at this fishing access site. From the gravel parking lot, anglers must travel about 0.2 miles on the paved Trout Run Trail to access this site. This portion of Trout Run Trail follows the stream and does not contain any large hills.



Angler parking at this location consists of gravel and mowed grass. The paved Trout Run Trail is a short walk (~25 feet) from the parking area here.