

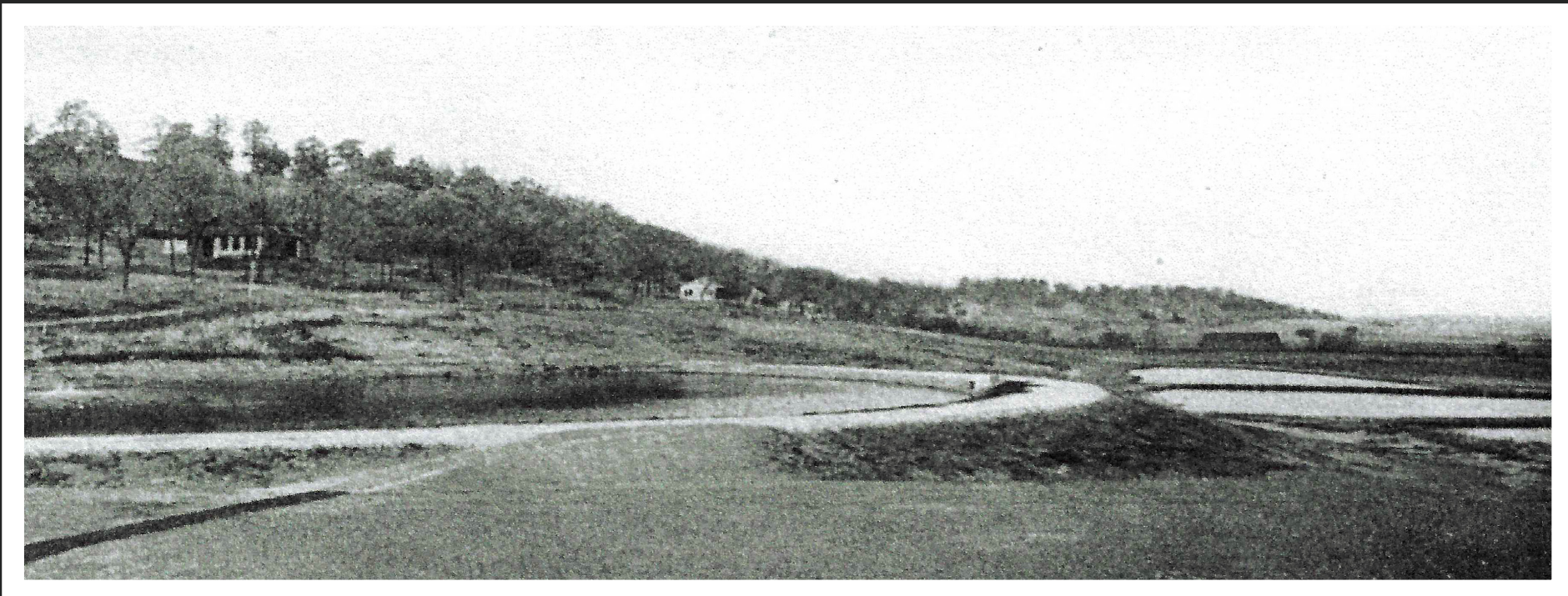
#18 Main Reservoir

The elliptically-shaped Main Reservoir is one of only two original features or buildings remaining at the hatchery, the other being the barn. The reservoir measures .9 acres in size, has a maximum depth of 14.5 feet, and has a capacity of 2,000,000 gallons. River water was pumped directly from the pumphouse to the reservoir via a 10-inch pipe. Within the reservoir, river sediment was allowed to settle to the bottom providing some water filtering capacity as well as providing another area for some fish culture opportunities. Throughout the history of the hatchery, sediment was periodically removed from the ponds and then used to reinforce the pond banks. Despite multiple changes to the number, size, and configuration of the ponds, the reservoir has not changed since construction in 1910.

The reservoir supplied water to all the fish ponds, the tank house, the basement of the main lab, and the temporary lab through 6- and 8-inch gravity flow pipes. Although pumping operations were conducted for several hours every day, the capacity of the reservoir allowed for the cessation of pumping operations for two or three days in the case of emergencies. Today, as in the past, river water is pumped directly to the reservoir from the modern pumphouse. The reservoir water is then directed through gravity feed underground piping to all the ponds where fish production activities are conducted. In recent years the Constellation Energy Corporation has used the reservoir to propagate mussels that are introduced into the Mississippi River and its tributaries. It is hoped the program will expand in the future.



Overview of Main Reservoir in 1920 during dedication ceremony, facing south.



Overview of Main Reservoir with cottages in the background in 1916, facing east.



Overview of the Main Reservoir from the entrance to the Living Quarters in 2021, facing southwest.

