

**Iowa Ambient Air Monitoring
Annual Report
2007**



**Air Quality Bureau
Iowa Department of Natural Resources**

Table of Contents

Introduction	1
Exceedances of National Ambient Air Quality Standards (NAAQS) in Iowa	2
NAAQS Exceedances in Iowa Measured in 2007	2
PM2.5 NAAQS Exceedance Locations and Dates	3
2007 PM10 and Ozone NAAQS Exceedance Locations and Dates	4
Iowa Ambient Monitoring Network	5
Site Locations	5
Sites Monitored	6
Cedar Rapids Monitoring Sites	7
Davenport Monitoring Sites	8
Des Moines Monitoring Sites	9
Site Changes	10
Sites Removed at the End of 2006	10
Monitors Removed at the End of 2006	10
Monitors Removed During 2007	10
Monitors Added During 2007	10
Ozone Monitoring Sites	11
Site Locations	11
Ozone Monitor Locations	12
Comparison of 2007 Ozone Data with the National Ambient Air Quality Standard	13
Data Completeness	14
PM2.5 Monitoring Sites	15
Site Locations	15
PM2.5 Monitor Locations	16
Comparison of 2007 PM2.5 Data with National Ambient Air Quality Standards	17
Data Completeness	18
PM10 Monitoring Sites	19
Site Locations	19
PM10 Monitoring Locations	20
Comparison of 2007 PM10 Data with National Ambient Air Quality Standard	21
Data Completeness	22
Sulfur Dioxide Monitoring Sites	23
Site Locations	23
Sulfur Dioxide Monitor Locations	24
Comparison of 2007 Sulfur Dioxide Data with National Ambient Air Quality Standards	25
Data Completeness	26
Carbon Monoxide Monitoring Sites	27
Site Locations	27
Carbon Monoxide Monitor Locations	28
Comparison of 2007 Carbon Monoxide Data with National Ambient Air Quality Standards	29
Data Completeness	30
Nitrogen Dioxide Monitoring Sites	31
Site Locations	31
Nitrogen Dioxide Monitoring Locations	32
Comparison of 2007 Nitrogen Dioxide Data with the National Ambient Air Quality Standards	33
Data Completeness	34
Additional Chart Information	35
Ozone	35
Comparison of 2007 Ozone Data with National Ambient Air Quality Standards	35
Data Completeness	35
PM2.5	35
Comparison of 2007 PM2.5 Data with National Ambient Air Quality Standards	35

Data Completeness	35
PM10	35
Comparison of 2007 PM10 Data with National Ambient Air Quality Standards	35
Data Completeness	35
Sulfur Dioxide	35
Comparison of 2007 Sulfur Dioxide Data with National Ambient Air Quality Standards	35
Data Completeness	35
Carbon Monoxide	36
Comparison of 2007 Carbon Monoxide Data with National Ambient Air Quality Standards.....	36
Data Completeness	36
Nitrogen Dioxide.....	36
Comparison of 2007 Nitrogen Dioxide Data with National Ambient Air Quality Standards	36
Data Completeness	36

Iowa Ambient Monitoring Network Review: 2007

Iowa Department of Natural Resources-Air Quality Bureau - Air Monitoring Group

Introduction

The purpose of this review is to compare ambient air monitoring data gathered in Iowa during the year 2007 with federal ambient air standards. These federal standards, known as National Ambient Air Quality Standards (NAAQS), have been established by the Environmental Protection Agency (EPA) for seven "criteria" pollutants: particulate matter with a diameter less than 10 microns (PM10), particulate matter with a diameter less than 2.5 microns (PM2.5), sulfur dioxide, ozone, nitrogen dioxide, carbon monoxide, and lead. Continuous monitoring methods have been approved by EPA for all monitoring methods except lead and PM2.5. Filter samplers and laboratory filter weighing procedures have been approved by EPA for both PM2.5 and PM10. All data (with the exception of carbon monoxide) summarized in this review was obtained using methods approved by EPA for comparison with the NAAQS. Carbon monoxide is monitored in Iowa with trace-level instruments that have not been approved by the EPA as a Federal Reference or Federal Equivalent Method, but have been recommended for use in quantifying low levels of carbon monoxide typical of most urban areas.

This report is divided into two parts. The first part is an executive summary, indicating where exceedances of the NAAQS were measured in Iowa during 2007. A more comprehensive review comprises the second part of the report, which includes the location and summary data for each monitor in the network.

Gaseous pollutant monitors (ozone, nitrogen dioxide, sulfur dioxide, and carbon monoxide) provide hourly values and operate 24 hours a day, seven days a week. Ozone monitors are operated only when ozone levels are highest, from April through October. Particulate filter samplers collect one filter per day and usually are not operated on successive days. Most PM10 filter based monitors are operated at a sampling frequency of one sample every sixth day, and most PM2.5 monitors are run at a frequency of one sample every third day. Some particulate monitoring sites are run at frequencies greater than these nominal frequencies if they are located in highly populated areas, near pollution sources, or if pollutant levels are close to health standards. Lead was not monitored in Iowa during the year 2007.

Incomplete data may skew the summary statistics for a monitor. In order to alert the reader to data completeness problems, monitors that were added or removed part way through the year have been indicated by an asterisk, and data completeness statistics have been provided for each monitor. If a monitor collected all of the scheduled samples, then it has an associated data completeness of 100%. If the data capture from a monitor is insufficient to compute a valid annual average according to EPA completeness criteria, then the bar representing the comparison of the annual average to the NAAQS for the monitor is hatched on the corresponding bar chart. In 2007 there were 48 NAAQS exceedances in the state of Iowa, these exceedances are detailed in this report.

Data used to create this report were gathered by three organizations under contract with the Iowa Department of Natural Resources: the University of Iowa Hygienic Laboratory, the Linn County Public Health Department, and the Polk County Public Works Air Quality Division. Contract funds were provided by US EPA, the state of Iowa legislature, and regulated industry. Air pollution data for Iowa and all other states are available online at: <http://www.epa.gov/air/data/>. Additional information on the NAAQS is available at: <http://www.epa.gov/air/criteria.html>.

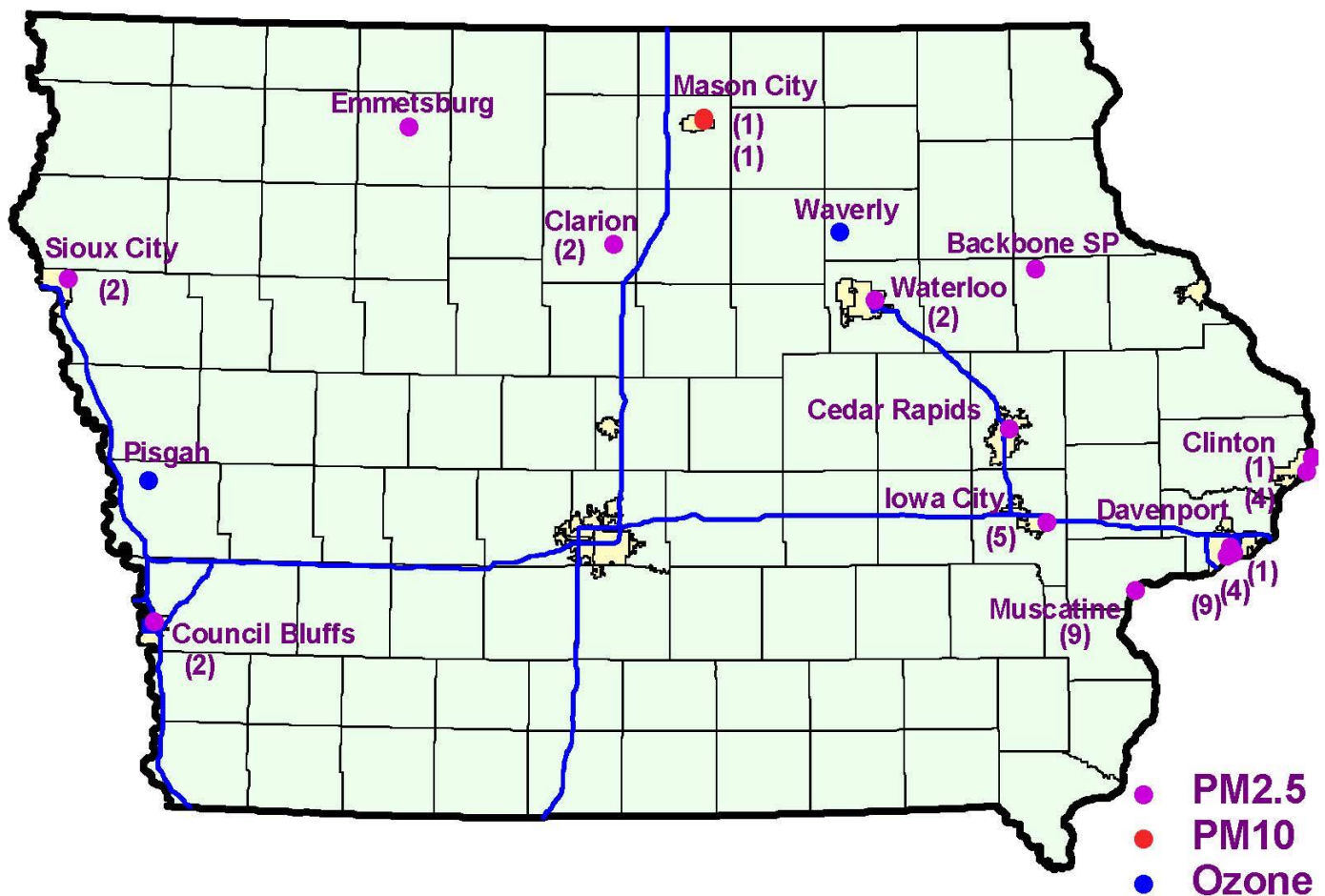
Exceedances of National Ambient Air Quality Standards (NAAQS) in Iowa

Pollutant	Averaging Period	Exceedance Level	Units	Number of Exceedances
Ozone	8hr	0.085	ppm	2
PM 2.5	24hr	35.5*	micrograms per cubic meter	44
	annual	15.05	micrograms per cubic meter	0
PM10	24hr	155	micrograms per cubic meter	2
Sulfur dioxide	3hr	0.55	ppm	0
	24hr	0.145	ppm	0
	annual	0.0305	ppm	0
Carbon monoxide	1hr	35.5	ppm	0
	8hr	9.5	ppm	0
Nitrogen dioxide	annual	0.0535	ppm	0
Lead	quarterly	1.55	micrograms per cubic meter	N/A**

*The 24-Hour NAAQS for PM2.5 was lowered from 65.5 to 35.5 micrograms per cubic meter, effective 12/18/2006

**Lead was not monitored in 2007

NAAQS Exceedances in Iowa Measured in 2007



PM2.5 NAAQS Exceedance Locations and Dates

Sampling Frequency	1 in 3	1 in 3	daily	1 in 3	1 in 3	1 in 3	1 in 3	1 in 3	1 in 3	1 in 3	1 in 3	daily	daily	daily	daily	
Monitoring Site	Backbone State Park	Cedar Rapids, Army Reserve	Clinton, Rainbow Park	Davenport, Adams Sch.	Emmetsburg, Iowa Lakes Coll.	Clarion, Jannsen Farm	Council Bluffs, Franklin Sch.	Sioux City, Lowell Sch.	Waterloo, Grout Museum	Clinton, Chancy Park	Davenport, Jefferson Sch.	Iowa City, Hoover Sch.	Davenport, BH Foundry	Muscatine, Garfield Sch.		
Exceedance Date	Concentration (micrograms per cubic meter)														Count	
2/23															44.0	1
2/24															53.2	1
2/28															54.7	1
3/7							37.7	36.7								2
3/9			37.3								42.1	41.9	44.2	41.5		5
5/3															42.2	1
5/4															61.0	1
5/5															63.2	1
5/23										37.0						1
5/30										36.6						1
6/16														35.6		1
7/25													35.7			1
7/26														36.0		1
9/21														37.4		1
11/19														39.1		1
11/20											35.8	36.9	38.3			3
12/17						36.4			37.5	35.6				38.2		4
12/19											57.2	54.8	56.8	54.9		4
12/20	51.5	53.4		46.0	38.4	48.0	49.1	45.7	63.0	44.3	45.3	47.4	47.5	47.6		13
Count	1	1	1	1	1	2	2	2	2	4	4	5	9	9	Total= 44	

2007 PM10 and Ozone NAAQS Exceedance Locations and Dates

2007 PM10 NAAQS Exceedances					
Monitoring Site	Sampling Frequency	Exceedance Date	2/15	11/5	Count
Mason City, Washington School	1 in 2	Concentration (micrograms per cubic meter)	157		1
Mason City, Holnam Cement	daily			162	1
Count			1	1	Total= 2

Concentrations 155 micrograms per cubic meter or greater exceed the NAAQS

2007 Ozone NAAQS Exceedances					
Monitoring Site	Sampling Schedule	Exceedance Date	6/13	6/15	Count
Waverly, Airport	April to October, Hourly	Concentration (ppb)	86		1
Pisgah, Highway Maintenance	April to October, Hourly			85	1
Count			1	1	Total= 2

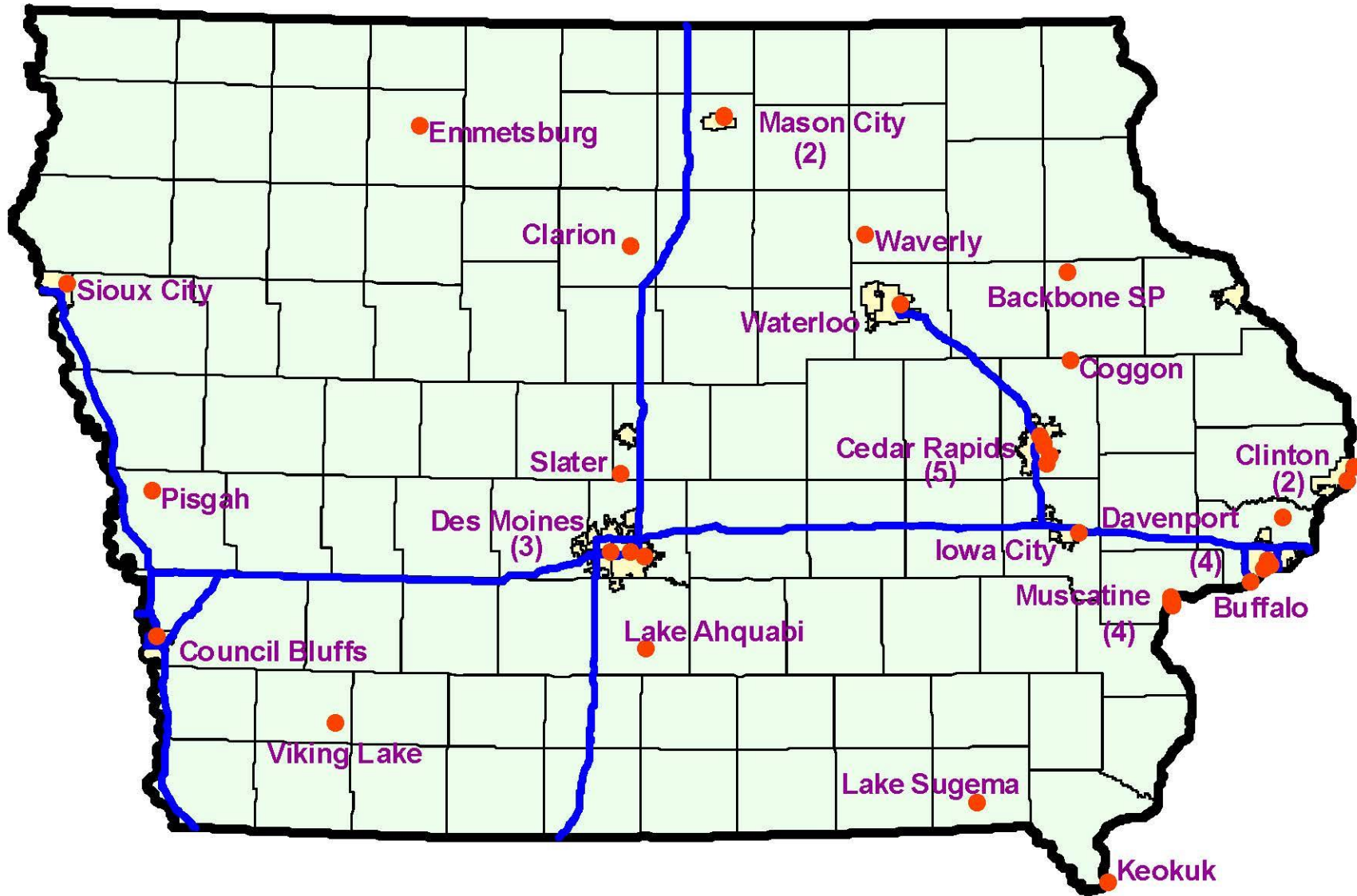
Concentrations 85 ppb or greater exceed the NAAQS

Iowa Ambient Monitoring Network

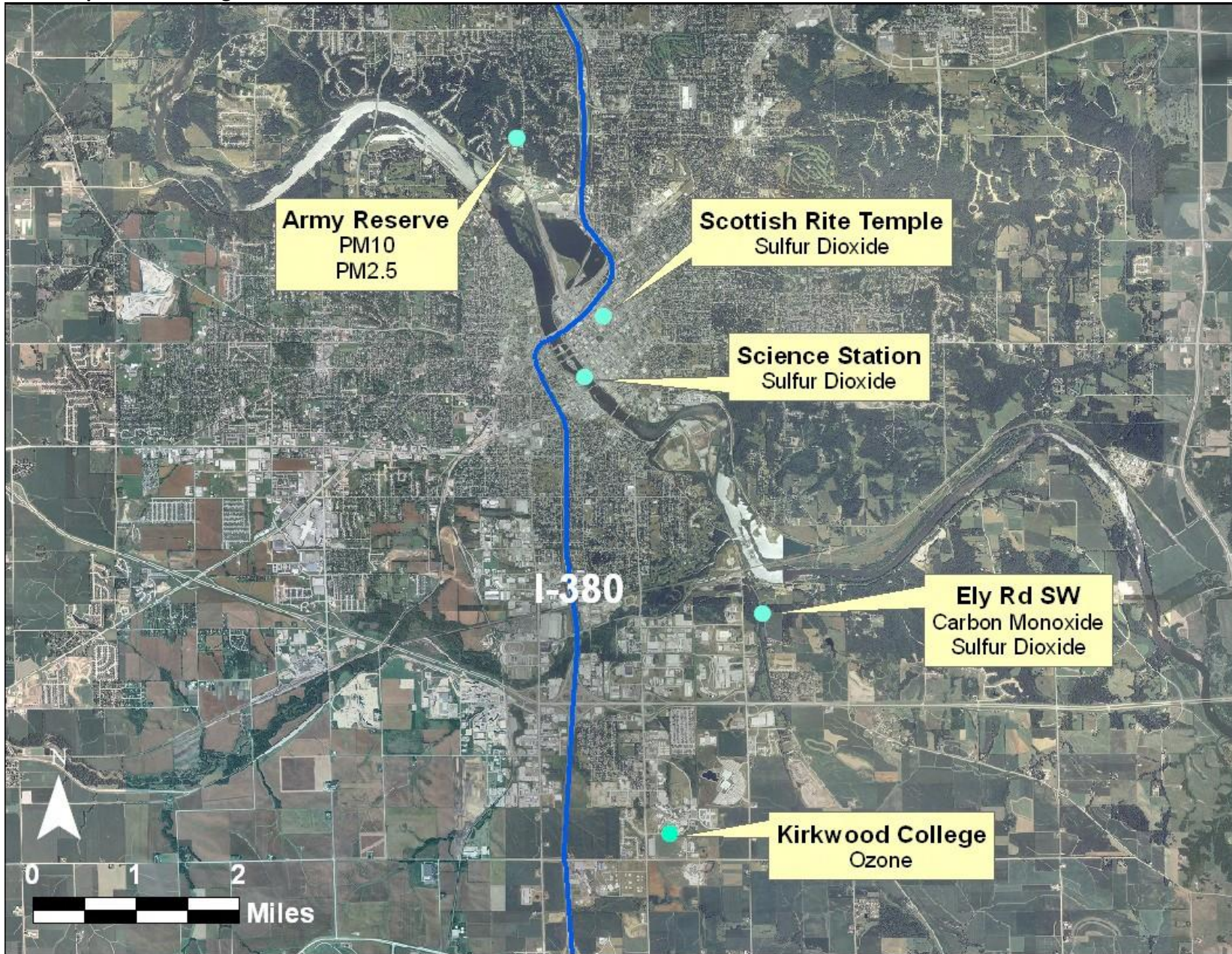
Site Locations

Site ID	Name	City	Address	County	Site Label	Pollutants
190130008	Grout Museum	Waterloo	West Park St. & South St.	Black Hawk	Waterloo, Grout Museum	PM10, PM2.5
190170011	Waverly Airport	Waverly	Waverly Airport	Bremer	Waverly, Airport	Ozone, PM2.5
190330018	Holnam Cement	Mason City	17th St. & Washington St.	Cerro Gordo	Mason City, Holnam Cement	PM10, SO2
190330020	Washington Sch.	Mason City	700 N. Washington Avenue	Cerro Gordo	Mason City, Washington Sch.	PM10
190450019	Chancy Park	Clinton	23rd & Camanche	Clinton	Clinton, Chancy Park	PM2.5, SO2
190450021	Rainbow Park	Clinton	Roosevelt St.	Clinton	Clinton, Rainbow Park	Ozone, PM2.5
190550001	Backbone State Park	not in a city	Fish Hatchery Backbone State Park	Delaware	Backbone State Park	PM2.5
190851101	Highway Maintenance Shed	Pisgah	1575 Hwy 183	Harrison	Pisgah, Highway Maintenance	Ozone
191032001	Hoover Elementary	Iowa City	2200 East Court	Johnson	Iowa City, Hoover Sch.	PM2.5
191110008	Fire Station	Keokuk	111S. 13th St.	Lee	Keokuk, Fire Station	PM2.5
191130028	Kirkwood College	Cedar Rapids	6301 Kirkwood Blvd SW (Iowa Hall)	Linn	Cedar Rapids, Kirkwood Coll.	Ozone
191130029	Science Station	Cedar Rapids	1st St. & 5th Ave. SW	Linn	Cedar Rapids, Science Station	SO2
191130031	Scottish Rite Temple	Cedar Rapids	616 A Ave.	Linn	Cedar Rapids, Scottish Rite Temple	SO2
191130033	Coggon Elementary School	Coggon	408 E Linn St.	Linn	Coggon, Coggon Elementary School	Ozone
191130037	Army Reserve Center	Cedar Rapids	1599 Wenig Rd. NE	Linn	Cedar Rapids, Army Reserve	PM10, PM2.5
191130038	Ely Rd. SW	Cedar Rapids	Ely Rd. SW	Linn	Cedar Rapids, Ely Rd. SW	CO, SO2
191370002	Viking Lake State Park	not in a city	2780 Viking Lake Road	Montgomery	Viking Lake State Park	Ozone, PM10, PM2.5
191390015	Garfield School	Muscatine	1409 Wisconsin	Muscatine	Muscatine, Garfield Sch.	PM10, PM2.5
191390016	Greenwood Cemetary	Muscatine	Fletcher St. & Kimble St.	Muscatine	Muscatine, Greenwood Cemetary	SO2
191390017	Muscatine Power & Water	Muscatine	2200 Steward Rd.	Muscatine	Muscatine, Power and Water	SO2
191390020	Musser Park	Muscatine	Oregon St. & Earl Ave.	Muscatine	Muscatine, Musser Park	SO2
191471002	Iowa Lakes College	Emmetsburg	Iowa Lakes Community College - S Camp	Palo Alto	Emmetsburg, Iowa Lakes Coll.	Ozone, PM10, PM2.5
191530030	Public Health Bldg.	Des Moines	1907 Carpenter	Polk	Des Moines, Public Health Bldg.	CO, NO2, Ozone, PM10, PM2.5, SO2
191530059	National By-Products	Des Moines	SE 18th & Scott St.	Polk	Des Moines, Nat. By-Products	PM2.5
191532510	Indian Hills Junior High	Clive	9401 Indian Hills	Polk	Clive, Indian Hills Sch.	PM10, PM2.5
191550009	Franklin Elementary	Council Bluffs	3130 C Ave.	Pottawattamie	Council Bluffs, Franklin Sch.	PM10, PM2.5
191630014	Scott County Park	Davenport	Scott County Park	Scott	Scott County Park	Ozone
191630015	Jefferson Elementary	Davenport	10th St. & Vine St.	Scott	Davenport, Jefferson Sch.	CO, NO2, Ozone, PM10, PM2.5, SO2
191630017	Linwood Mining	Buffalo	11100 110th Ave.	Scott	Buffalo, LW Mining	PM10
191630018	Adams Elementary	Davenport	3029 N Division St.	Scott	Davenport, Adams Sch.	PM10, PM2.5
191630019	Black Hawk Foundry	Davenport	300 Wellman St.	Scott	Davenport, BH Foundry	PM10, PM2.5
191690011	Slater Elementary	Slater	505 Linn St.	Story	Slater, Slater Sch.	Ozone
191770006	Lake Sugema	not in a city	24430 Lacey Trl, Keosauqua Lake Sugema	Van Buren	Keosauqua, Lake Sugema	Ozone, PM10, PM2.5, SO2
191810022	Lake Ahquabi State Park	not in a city	1650 118th Ave.	Warren	Lake Ahquabi State Park	Ozone
191930017	Lowell Elementary	Sioux City	27th at Morgan	Woodbury	Sioux City, Lowell Sch.	PM10, PM2.5
191970004	Jannsen Farm	Clarion	Jannsen Farm	Wright	Clarion, Jannsen Farm	PM2.5

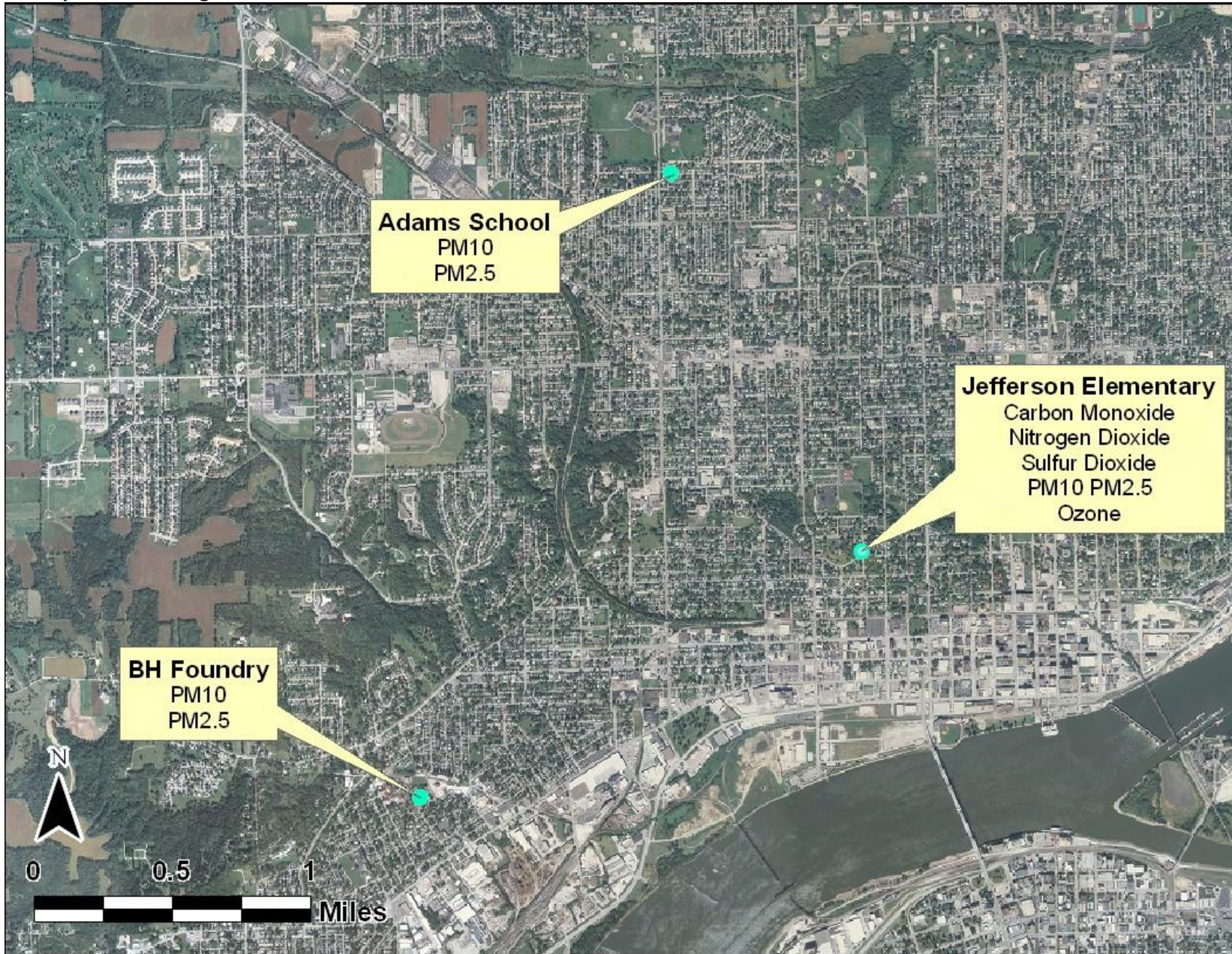
Sites Monitored



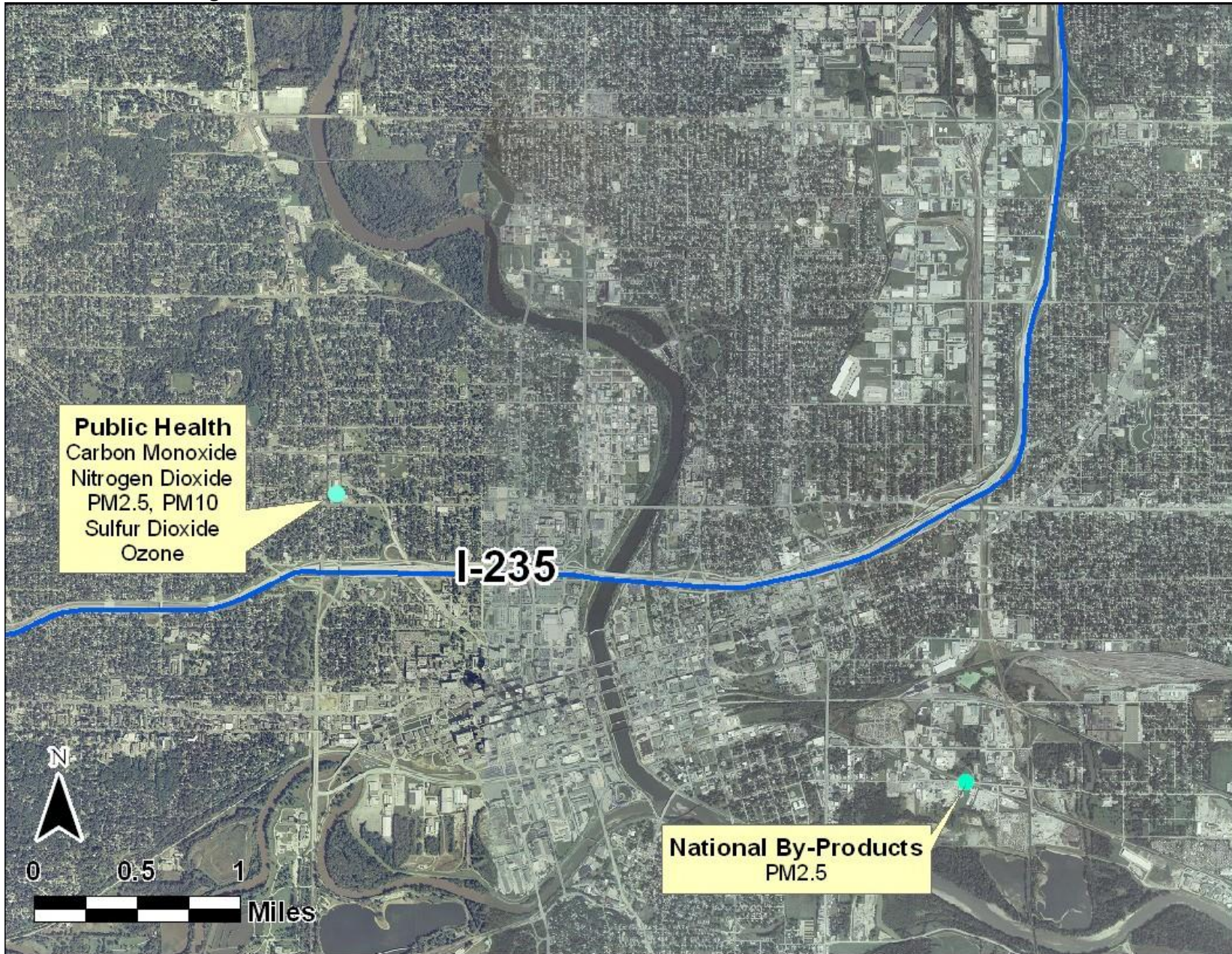
Cedar Rapids Monitoring Sites



Davenport Monitoring Sites



Des Moines Monitoring Sites



Site Changes**Sites Removed at the End of 2006**

Site	Name	City	County	Site Label	Start Date	End Date	Pollutants
191530058	Phillips School	Des Moines	Polk	Des Moines, Phillips Sch.	-	10/31/2006	O3
191530052	Tech High School	Des Moines	Polk	Des Moines, Tech High	-	12/31/2006	CO
191530061	Easter Seals	Des Moines	Polk	Des Moines, Easter Seals	-	12/31/2006	CO

Monitors Removed at the End of 2006

Site	Name	City	County	Site Label	Start Date	End Date	Pollutants
190550001	Backbone State Park	not in a city	Delaware	Backbone State Park	-	12/31/2006	PM10
191110008	Fire Station	Keokuk	Lee	Keokuk, Fire Station	-	12/31/2006	PM10

Monitors Removed During 2007

Site	Name	City	County	Site Label	Start Date	End Date	Pollutants
190170011	Waverly Airport	Waverly	Bremer	Waverly, Airport	-	11/17/2007	PM2.5

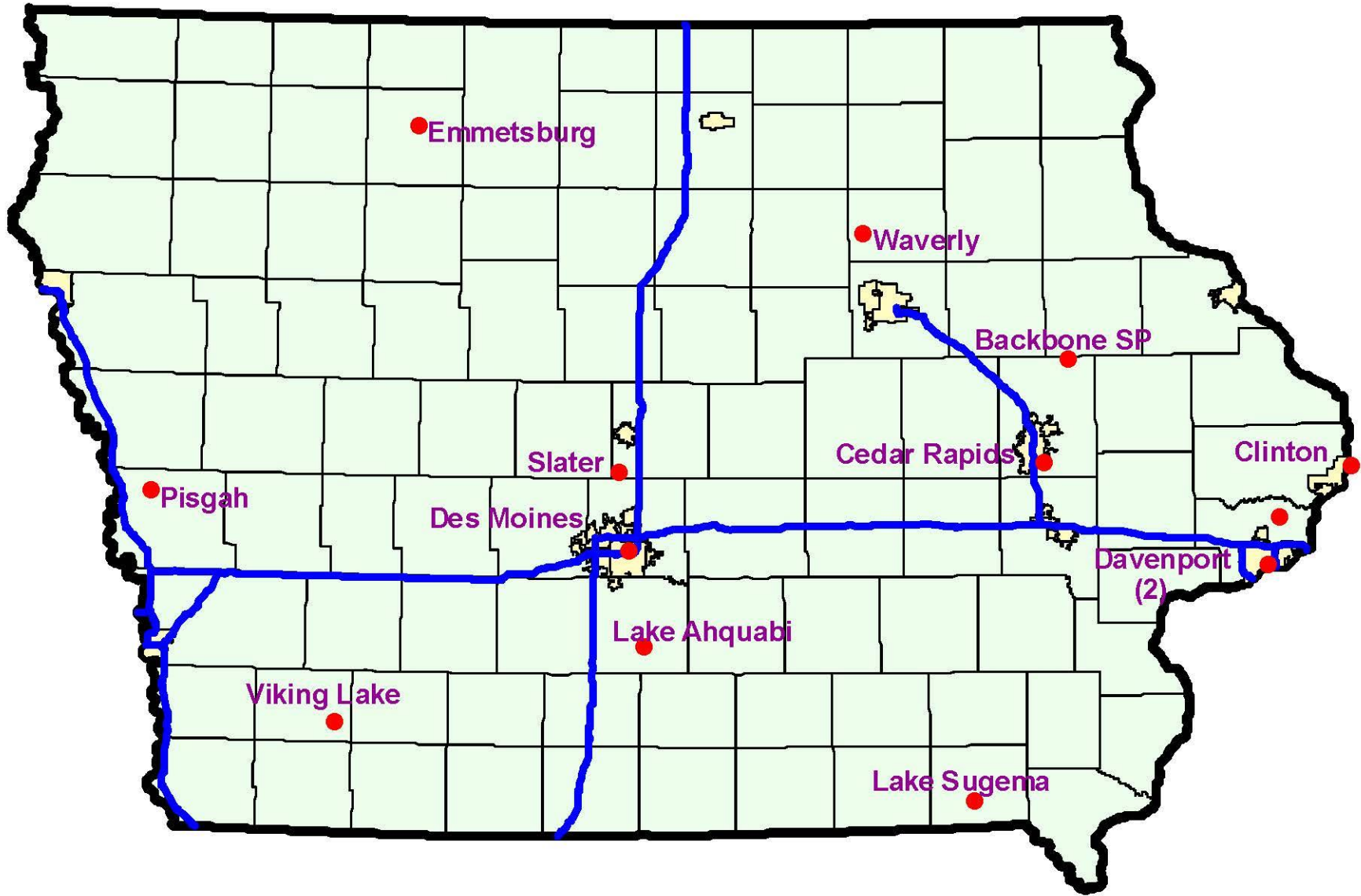
Monitors Added During 2007

Site	Name	City	County	Site Label	Start Date	End Date	Pollutants
190550001	Backbone State Park	not in a city	Delaware	Backbone State Park	1/3/2007	-	PM2.5
191110008	Fire Station	Keokuk	Lee	Keokuk, Fire Station	1/3/2007	-	PM2.5
191530030	Public Health Bldg.	Des Moines	Polk	Des Moines, Public Health Bldg.	2/23/2007	-	SO2
191530030	Public Health Bldg.	Des Moines	Polk	Des Moines, Public Health Bldg.	4/1/2007	-	O3
191770006	Lake Sugema	not in a city	Van Buren	Keosauqua, Lake Sugema	1/1/2007	-	PM10
191370002	Viking Lake State Park	not in a city	Montgomery	Viking Lake State Park	1/3/2007	-	PM10

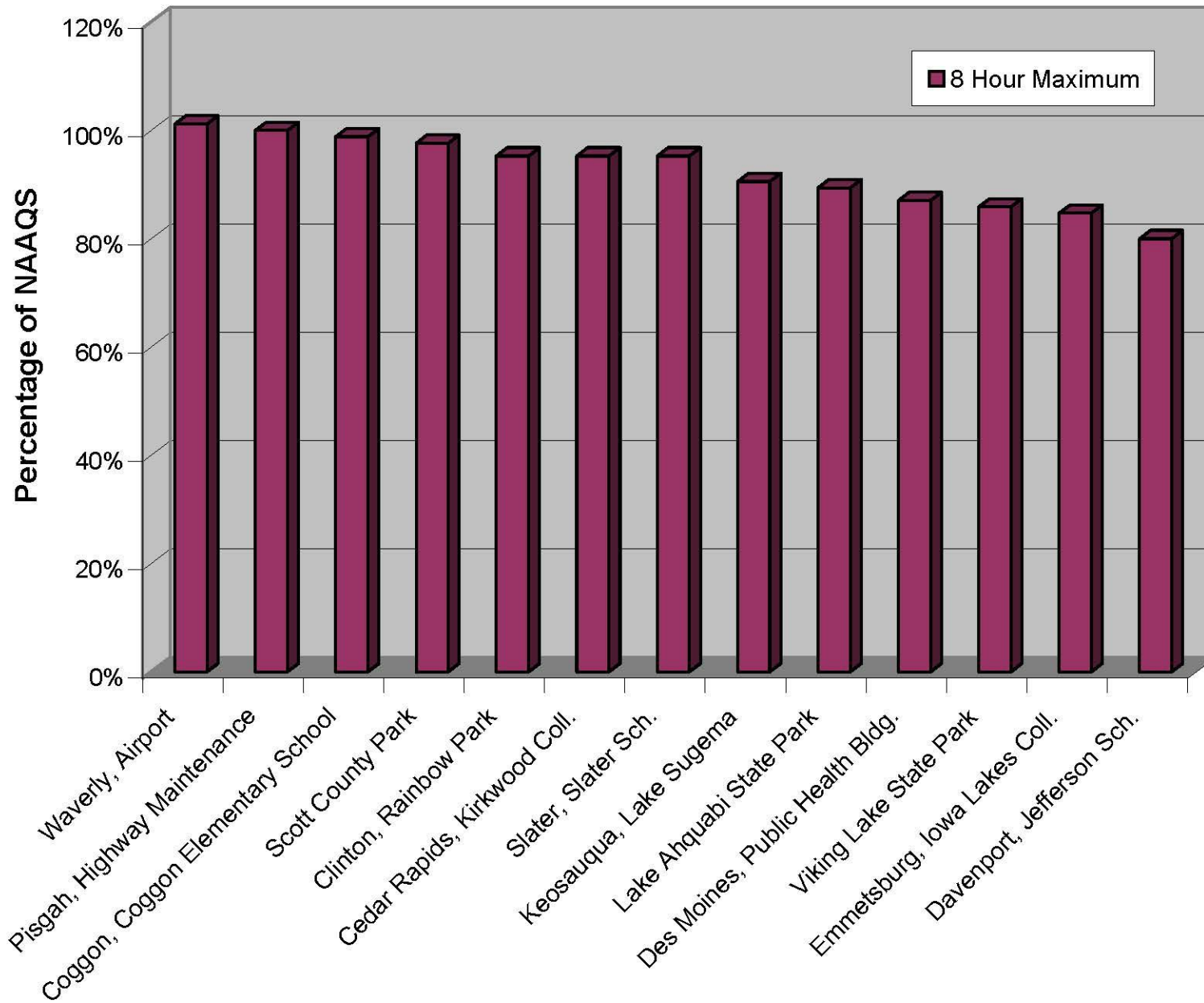
Ozone Monitoring Sites**Site Locations**

Site	Name	City	County	Site Label
190170011	Waverly Airport	Waverly	Bremer	Waverly, Airport
190450021	Rainbow Park	Clinton	Clinton	Clinton, Rainbow Park
190851101	Highway Maintenance Shed	Pisgah	Harrison	Pisgah, Highway Maintenance
191130028	Kirkwood College	Cedar Rapids	Linn	Cedar Rapids, Kirkwood Coll.
191130033	Coggon Elementary School	Coggon	Linn	Coggon, Coggon Elementary School
191370002	Viking Lake State Park	not in a city	Montgomery	Viking Lake State Park
191471002	Iowa Lakes College	Emmetsburg	Palo Alto	Emmetsburg, Iowa Lakes Coll.
191530030	Public Health Bldg.	Des Moines	Polk	Des Moines, Public Health Bldg.
191630014	Scott County Park	Davenport	Scott	Scott County Park
191630015	Jefferson Elementary	Davenport	Scott	Davenport, Jefferson Sch.
191690011	Slater Elementary	Slater	Story	Slater, Slater Sch.
191770006	Lake Sugema	not in a city	Van Buren	Keosauqua, Lake Sugema
191810022	Lake Ahquabi State Park	not in a city	Warren	Lake Ahquabi State Park

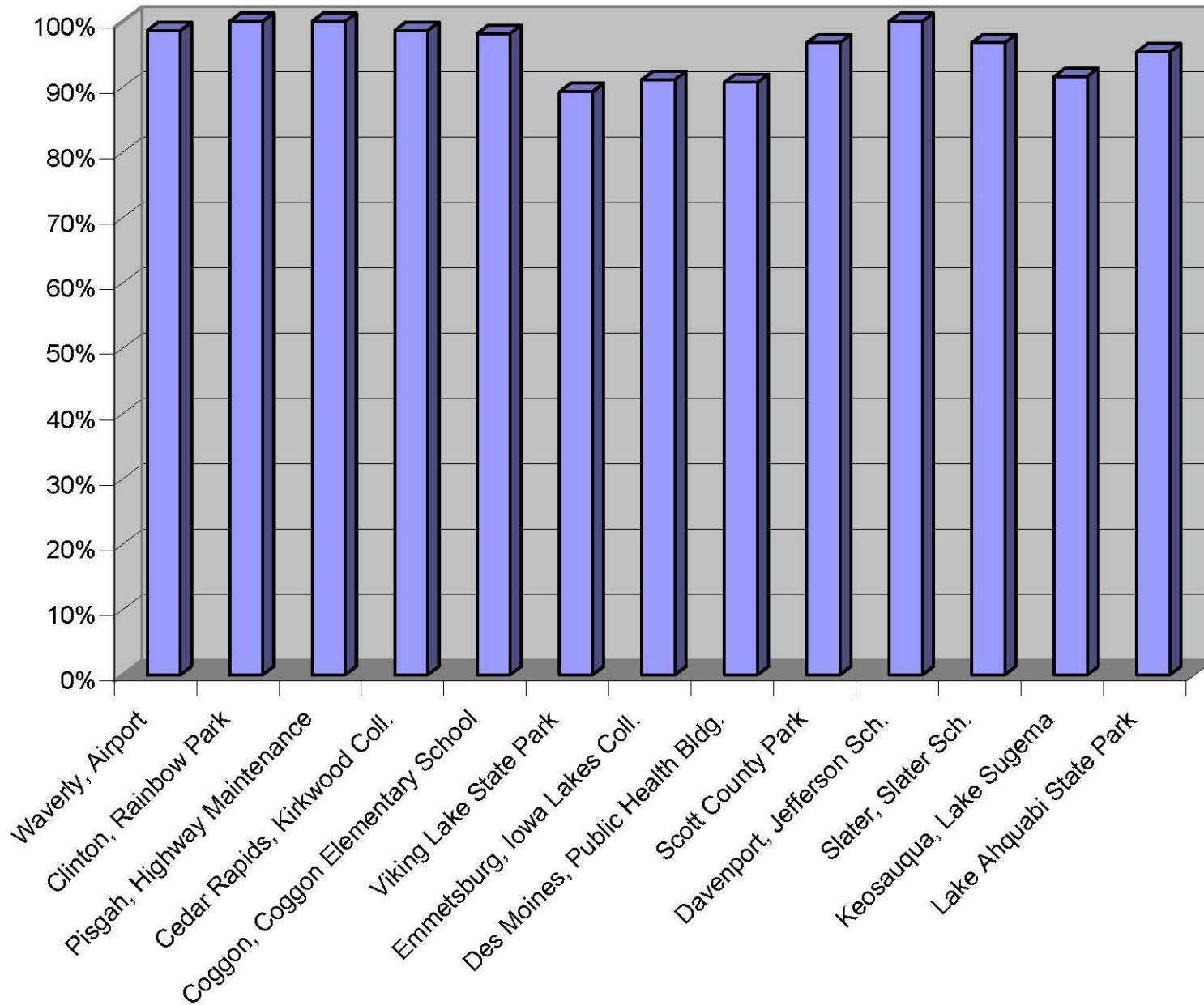
Ozone Monitor Locations



Comparison of 2007 Ozone Data with the National Ambient Air Quality Standard



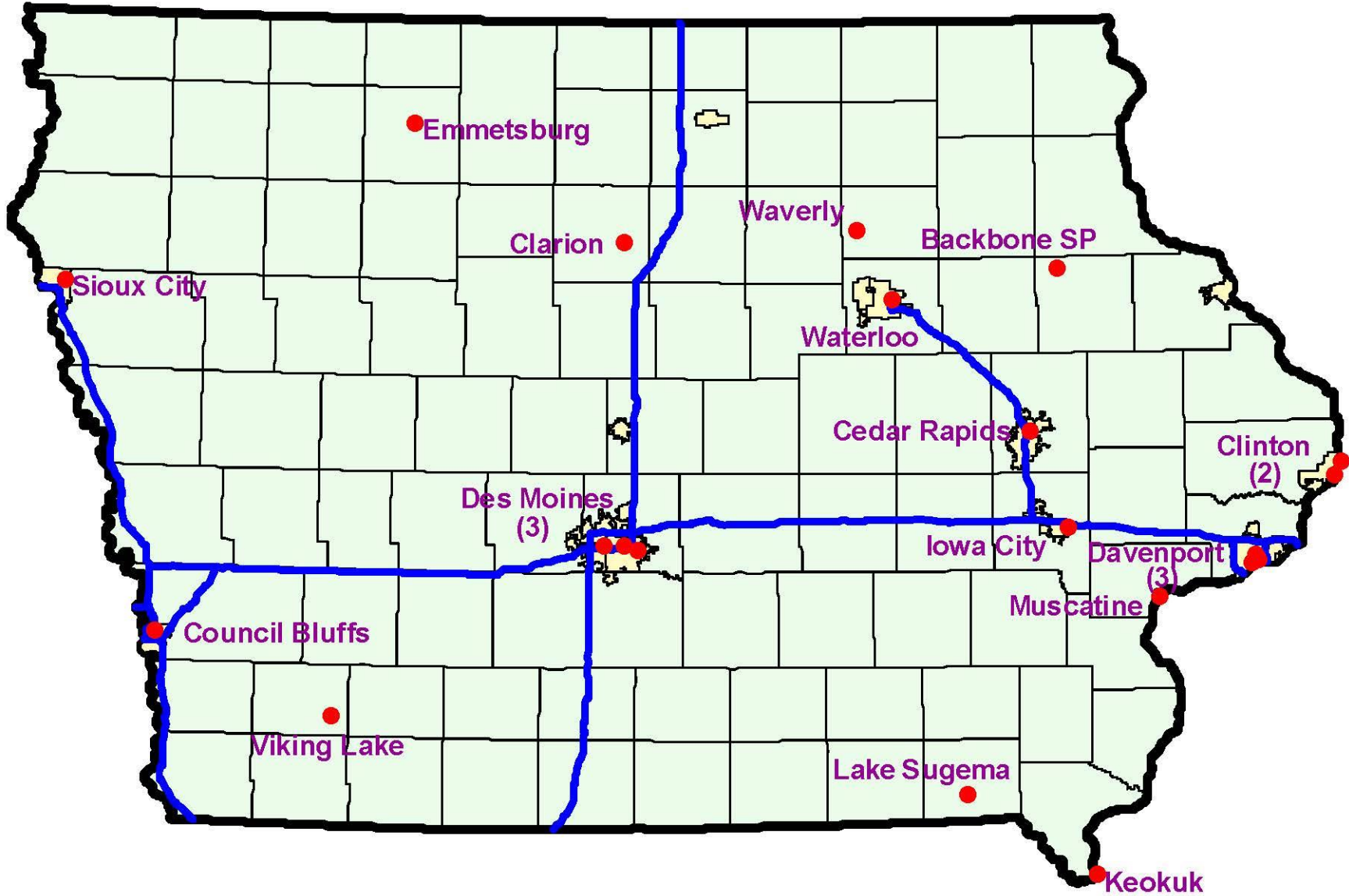
Data Completeness



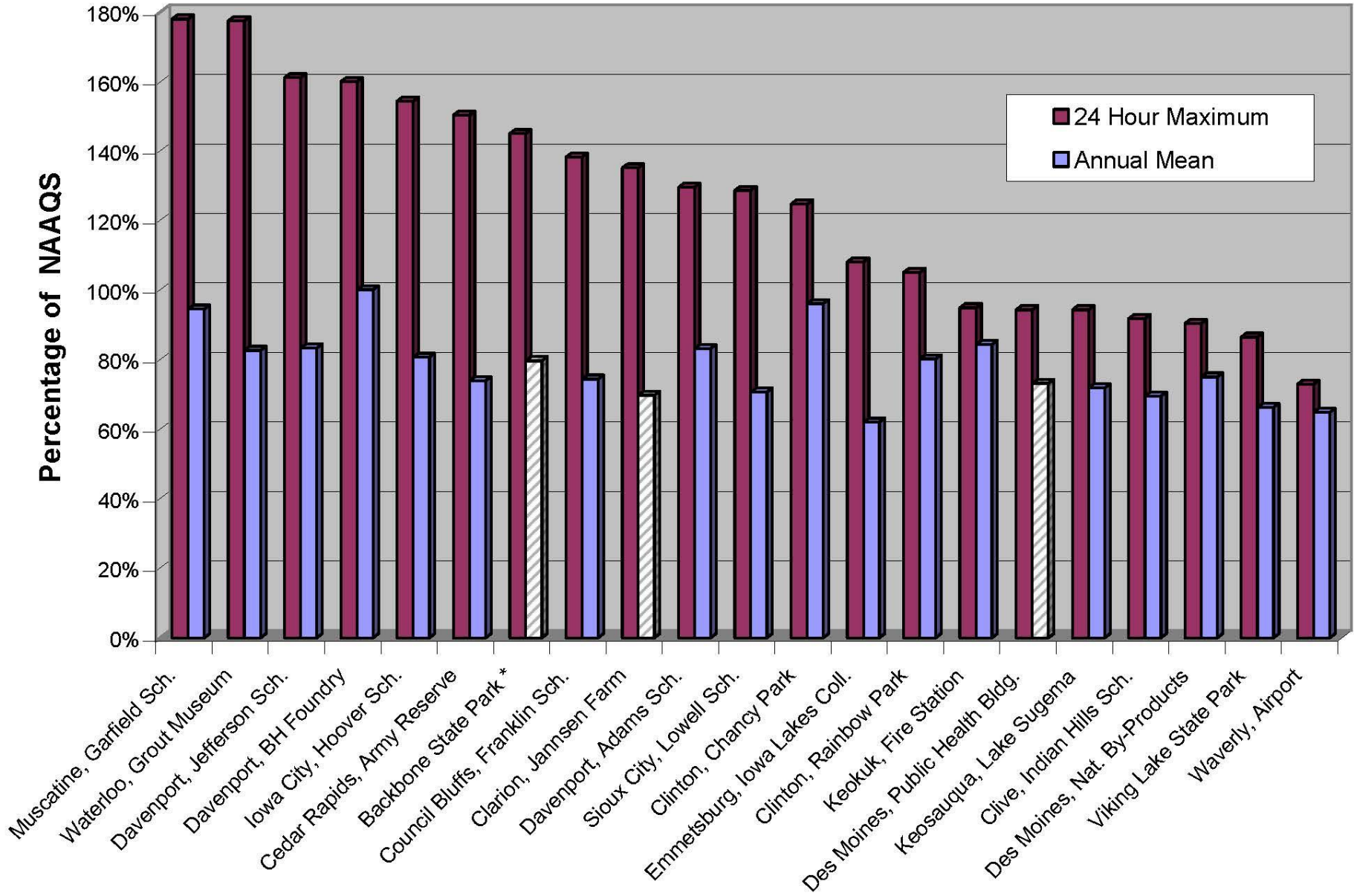
PM2.5 Monitoring Sites**Site Locations**

Site	Name	City	County	Site Label
190130008	Grout Museum	Waterloo	Black Hawk	Waterloo, Grout Museum
190170011	Waverly Airport	Waverly	Bremer	Waverly, Airport
190450019	Chancy Park	Clinton	Clinton	Clinton, Chancy Park
190450021	Rainbow Park	Clinton	Clinton	Clinton, Rainbow Park
190550001	Backbone State Park	not in a city	Delaware	Backbone State Park
191032001	Hoover Elementary	Iowa City	Johnson	Iowa City, Hoover Sch.
191110008	Fire Station	Keokuk	Lee	Keokuk, Fire Station
191130037	Army Reserve Center	Cedar Rapids	Linn	Cedar Rapids, Army Reserve
191370002	Viking Lake State Park	not in a city	Montgomery	Viking Lake State Park
191390015	Garfield School	Muscatine	Muscatine	Muscatine, Garfield Sch.
191471002	Iowa Lakes College	Emmetsburg	Palo Alto	Emmetsburg, Iowa Lakes Coll.
191530030	Public Health Bldg.	Des Moines	Polk	Des Moines, Public Health Bldg.
191530059	National By-Products	Des Moines	Polk	Des Moines, Nat. By-Products
191532510	Indian Hills Junior High	Clive	Polk	Clive, Indian Hills Sch.
191550009	Franklin Elementary	Council Bluffs	Pottawattamie	Council Bluffs, Franklin Sch.
191630015	Jefferson Elementary	Davenport	Scott	Davenport, Jefferson Sch.
191630018	Adams Elementary	Davenport	Scott	Davenport, Adams Sch.
191630019	Black Hawk Foundry	Davenport	Scott	Davenport, BH Foundry
191770006	Lake Sugema	not in a city	Van Buren	Keosauqua, Lake Sugema
191930017	Lowell Elementary	Sioux City	Woodbury	Sioux City, Lowell Sch.
191970004	Jannsen Farm	Clarion	Wright	Clarion, Jannsen Farm

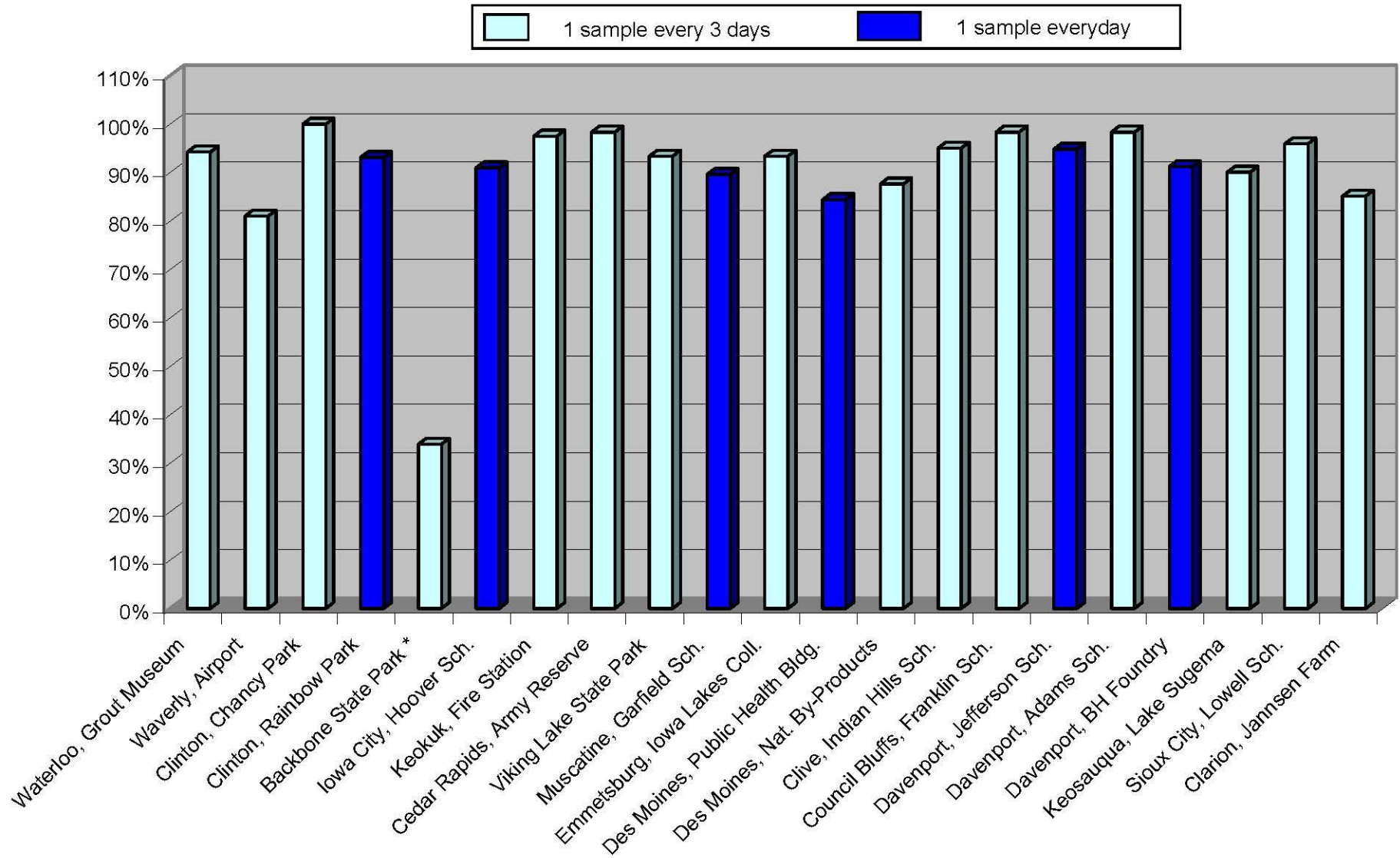
PM2.5 Monitor Locations



Comparison of 2007 PM2.5 Data with National Ambient Air Quality Standards



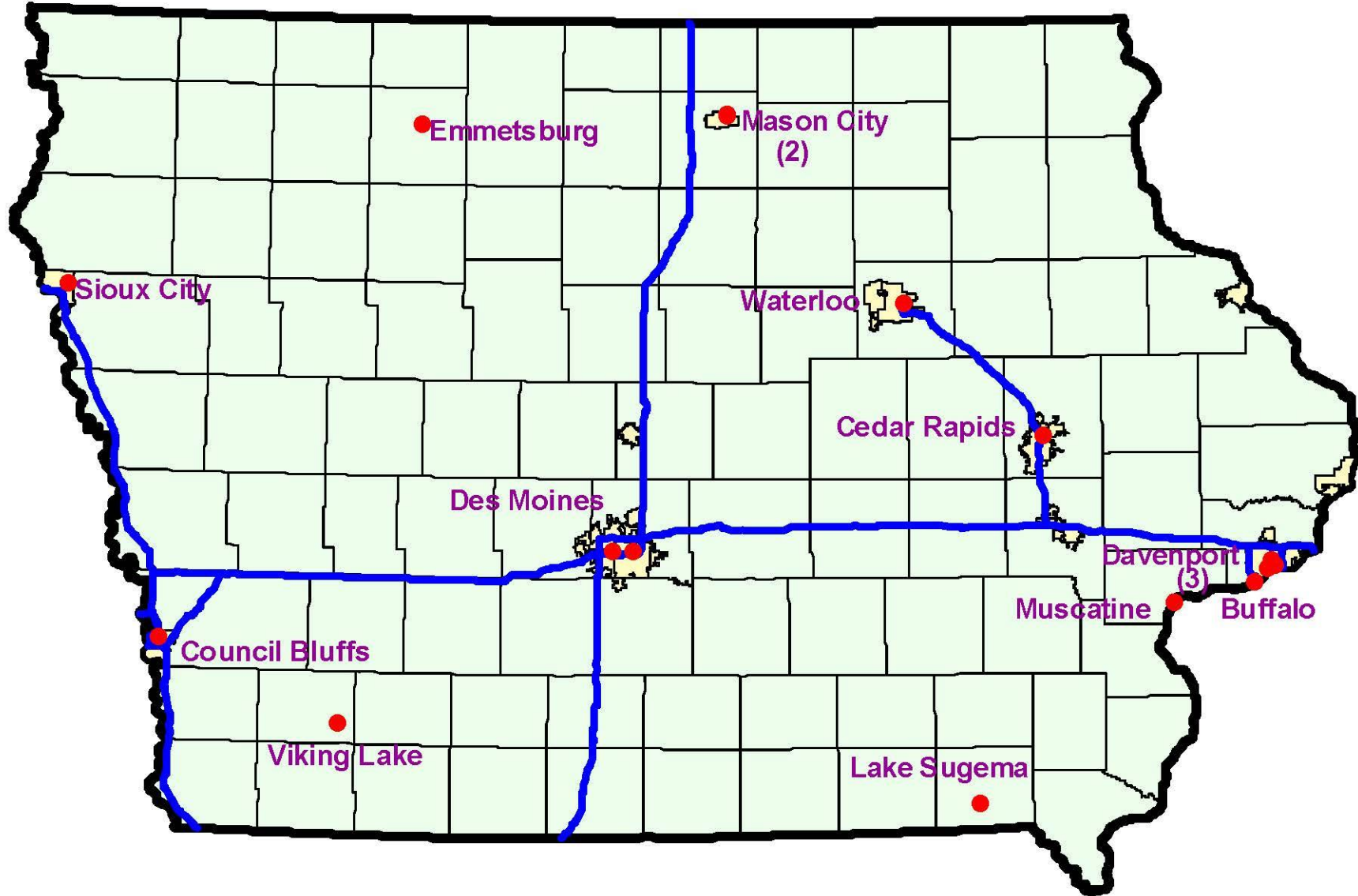
Data Completeness



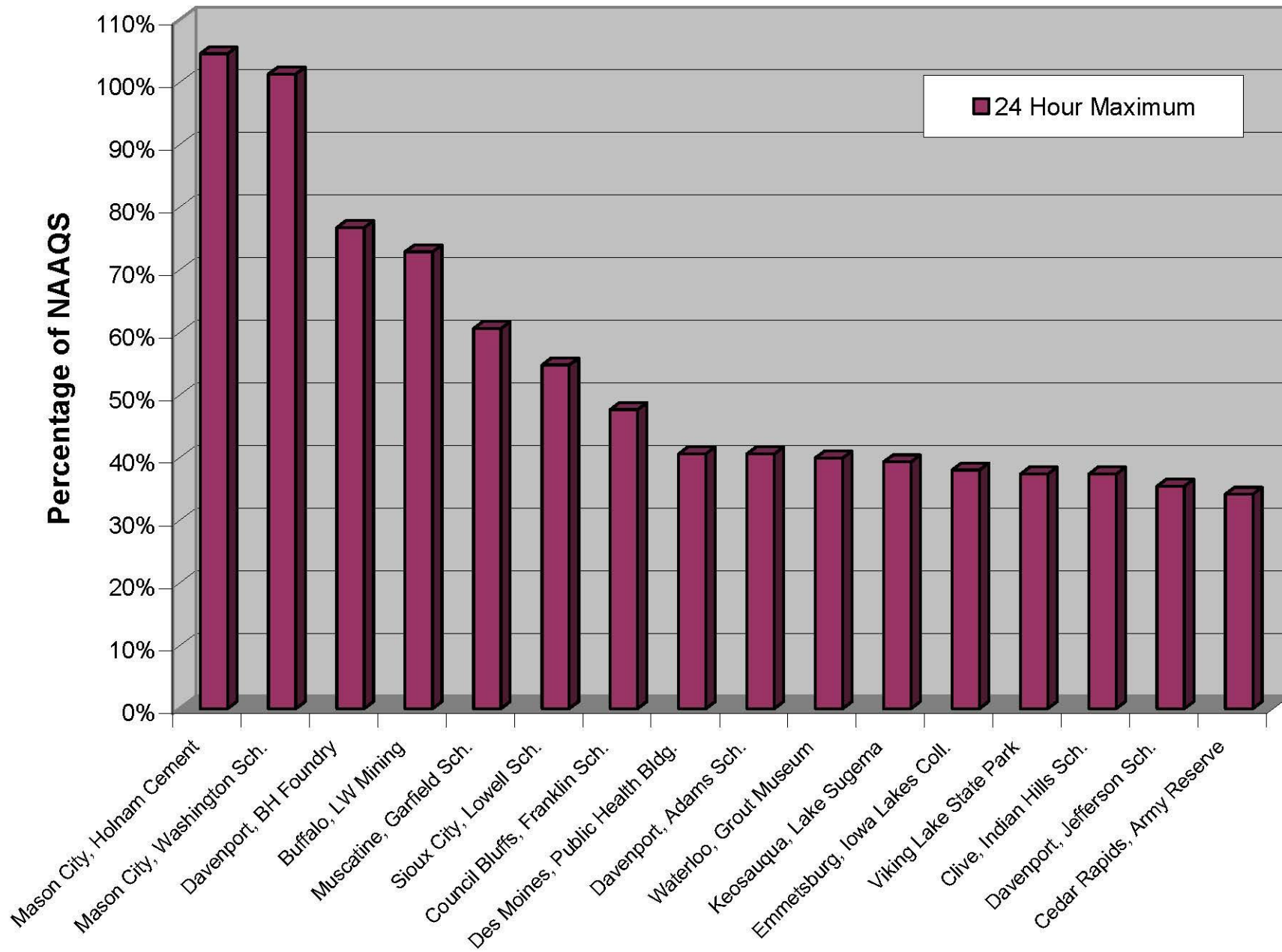
PM10 Monitoring Sites**Site Locations**

Site	Name	City	County	Site Label
190130008	Grout Museum	Waterloo	Black Hawk	Waterloo, Grout Museum
190330018	Holnam Cement	Mason City	Cerro Gordo	Mason City, Holnam Cement
190330020	Washington Sch.	Mason City	Cerro Gordo	Mason City, Washington Sch.
191130037	Army Reserve Center	Cedar Rapids	Linn	Cedar Rapids, Army Reserve
191370002	Viking Lake State Park	not in a city	Montgomery	Viking Lake State Park
191390015	Garfield School	Muscatine	Muscatine	Muscatine, Garfield Sch.
191471002	Iowa Lakes College	Emmetsburg	Palo Alto	Emmetsburg, Iowa Lakes Coll.
191530030	Public Health Bldg.	Des Moines	Polk	Des Moines, Public Health Bldg.
191532510	Indian Hills Junior High	Clive	Polk	Clive, Indian Hills Sch.
191550009	Franklin Elementary	Council Bluffs	Pottawattamie	Council Bluffs, Franklin Sch.
191630015	Jefferson Elementary	Davenport	Scott	Davenport, Jefferson Sch.
191630017	Linwood Mining	Buffalo	Scott	Buffalo, LW Mining
191630018	Adams Elementary	Davenport	Scott	Davenport, Adams Sch.
191630019	Black Hawk Foundry	Davenport	Scott	Davenport, BH Foundry
191770006	Lake Sugema	not in a city	Van Buren	Keosauqua, Lake Sugema
191930017	Lowell Elementary	Sioux City	Woodbury	Sioux City, Lowell Sch.

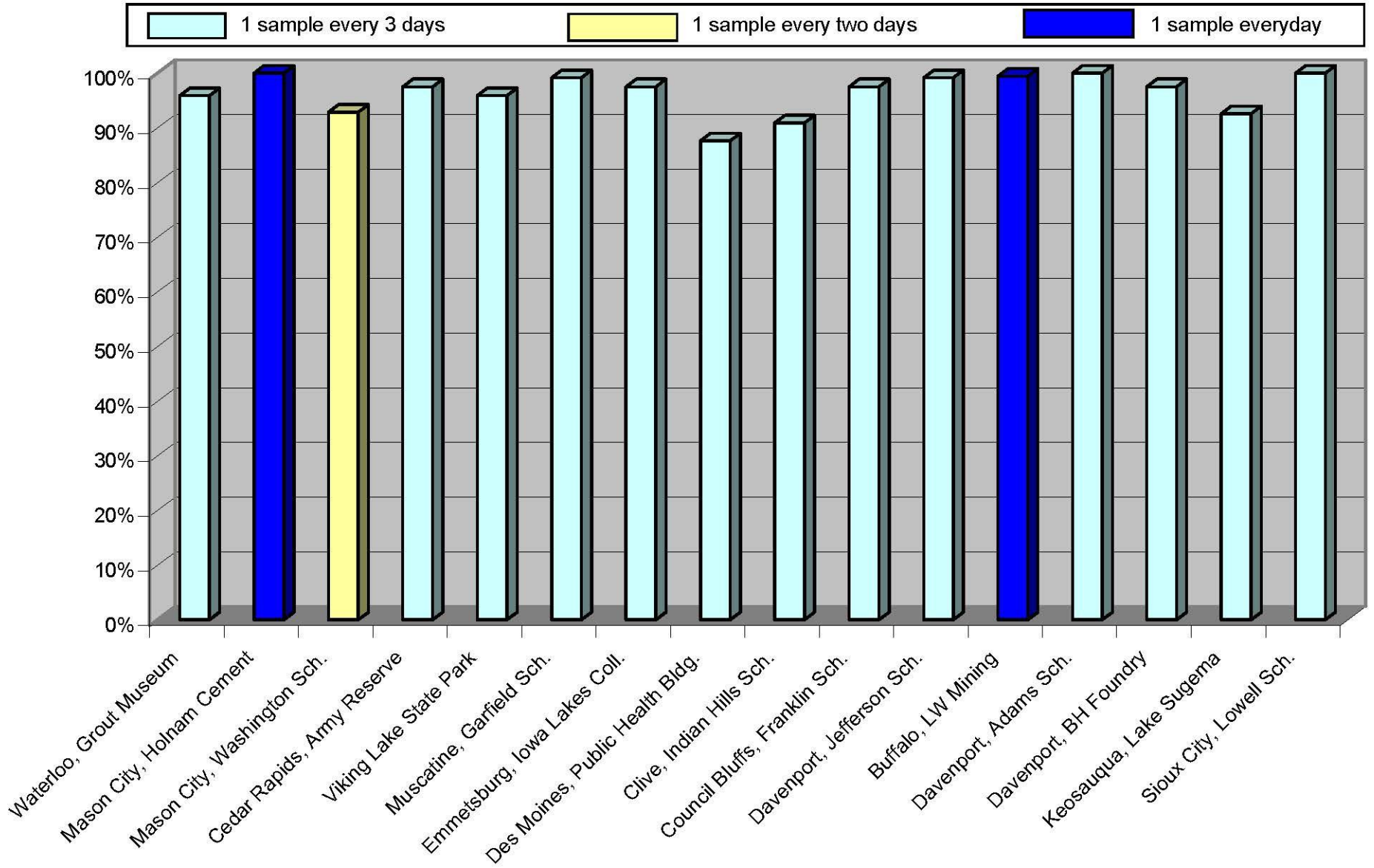
PM10 Monitoring Locations



Comparison of 2007 PM10 Data with National Ambient Air Quality Standard



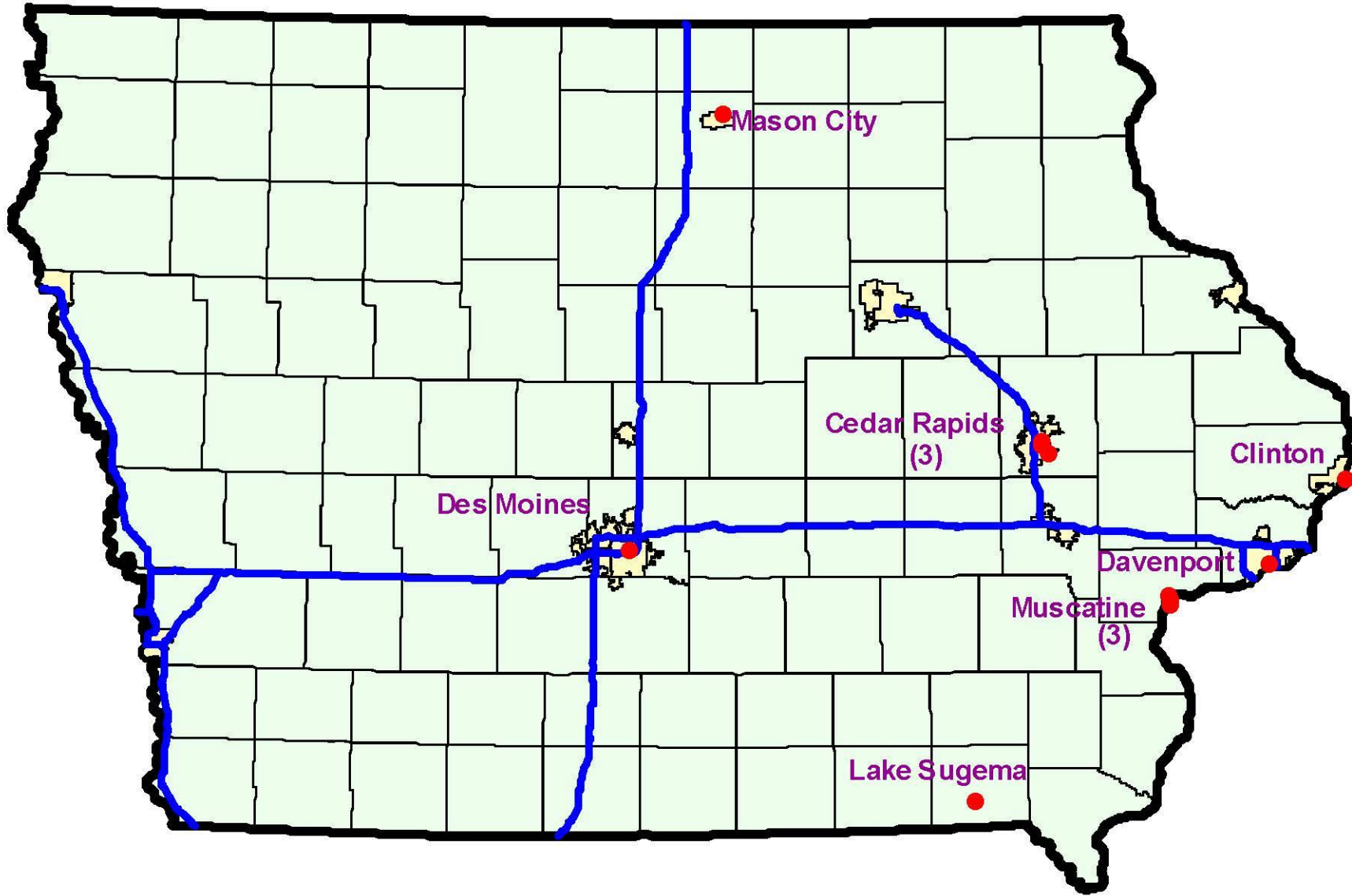
Data Completeness



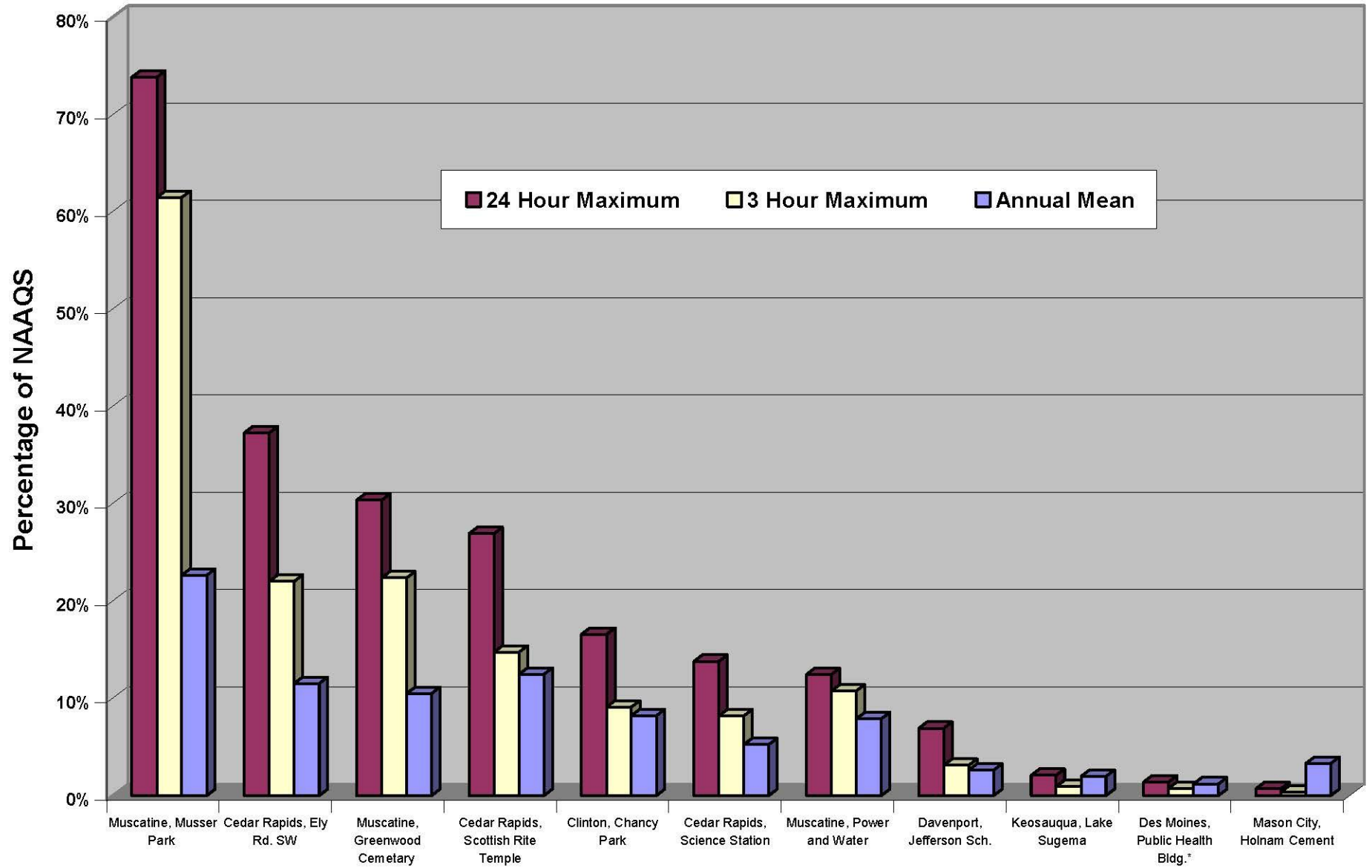
**Sulfur Dioxide Monitoring Sites
Site Locations**

Site	Name	City	County	Site Label
190330018	Holnam Cement	Mason City	Cerro Gordo	Mason City, Holnam Cement
190450019	Chancy Park	Clinton	Clinton	Clinton, Chancy Park
191130029	Science Station	Cedar Rapids	Linn	Cedar Rapids, Science Station
191130031	Scottish Rite Temple	Cedar Rapids	Linn	Cedar Rapids, Scottish Rite Temple
191130038	Ely Rd. SW	Cedar Rapids	Linn	Cedar Rapids, Ely Rd. SW
191390016	Greenwood Cemetary	Muscatine	Muscatine	Muscatine, Greenwood Cemetery
191390017	Muscatine Power & Water	Muscatine	Muscatine	Muscatine, Power and Water
191390020	Musser Park	Muscatine	Muscatine	Muscatine, Musser Park
191530030	Public Health Bldg.	Des Moines	Polk	Des Moines, Public Health Bldg.
191630015	Jefferson Elementary	Davenport	Scott	Davenport, Jefferson Sch.
191770006	Lake Sugema	not in a city	Van Buren	Keosauqua, Lake Sugema

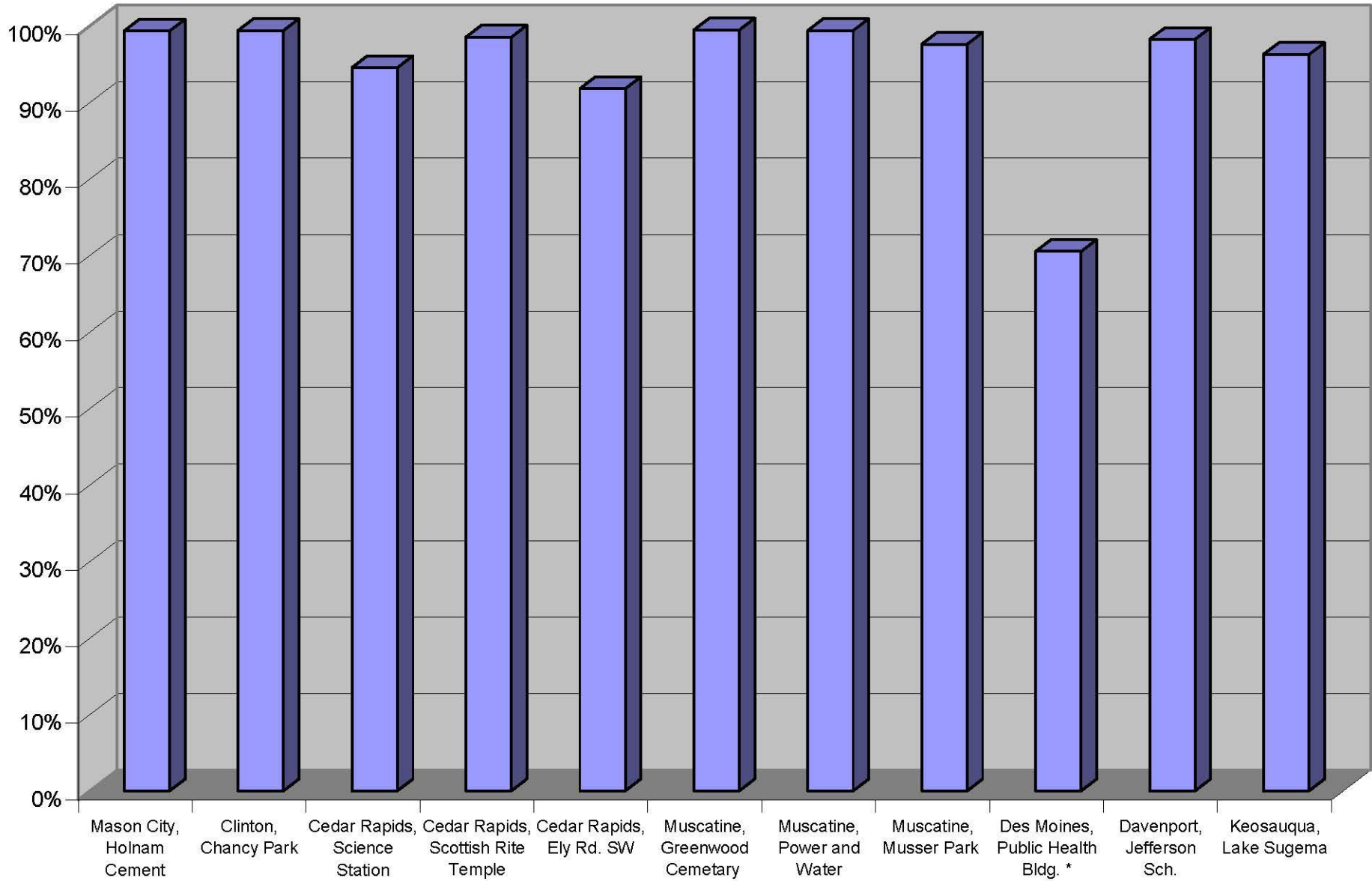
Sulfur Dioxide Monitor Locations



Comparison of 2007 Sulfur Dioxide Data with National Ambient Air Quality Standards



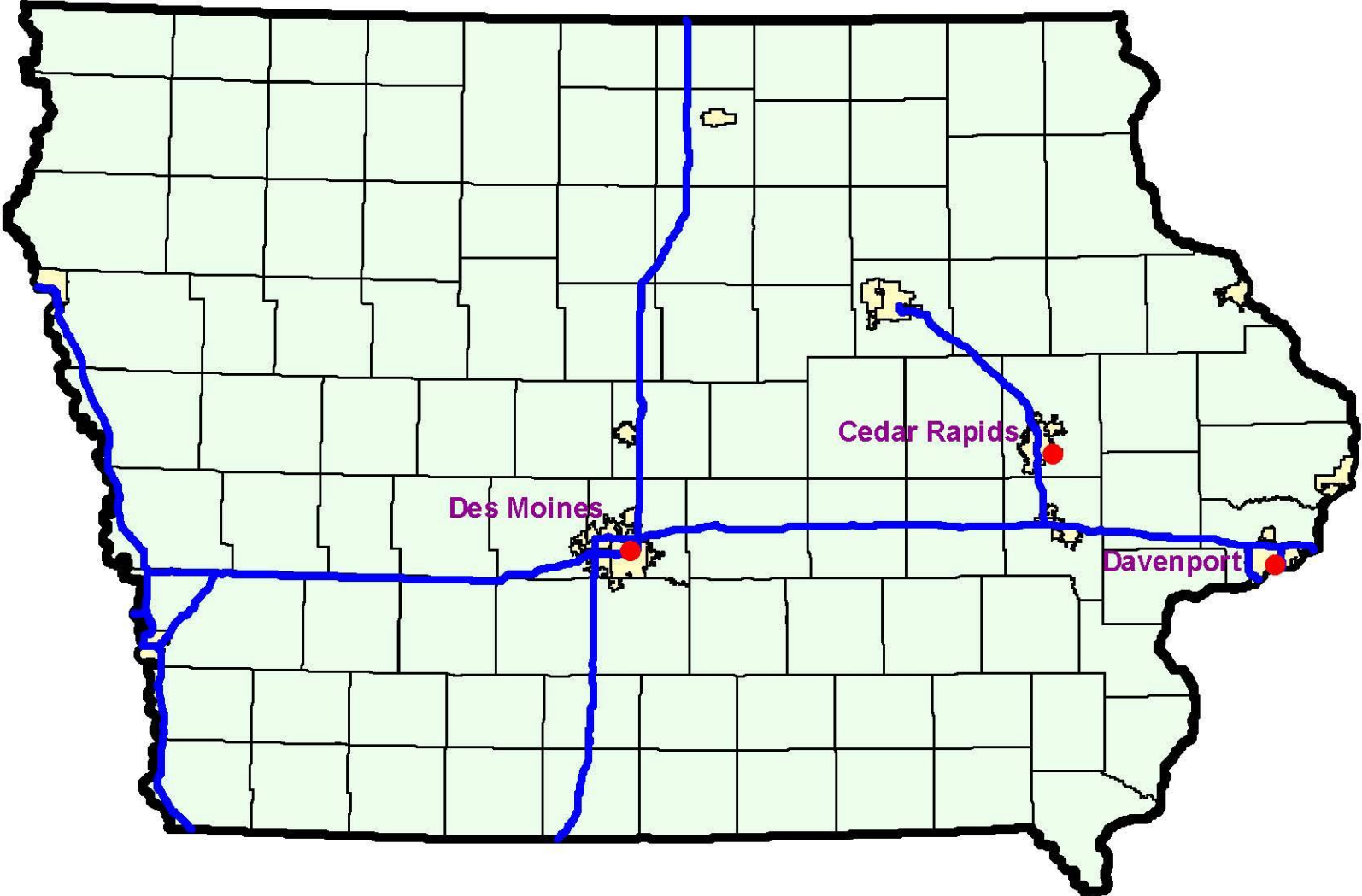
Data Completeness



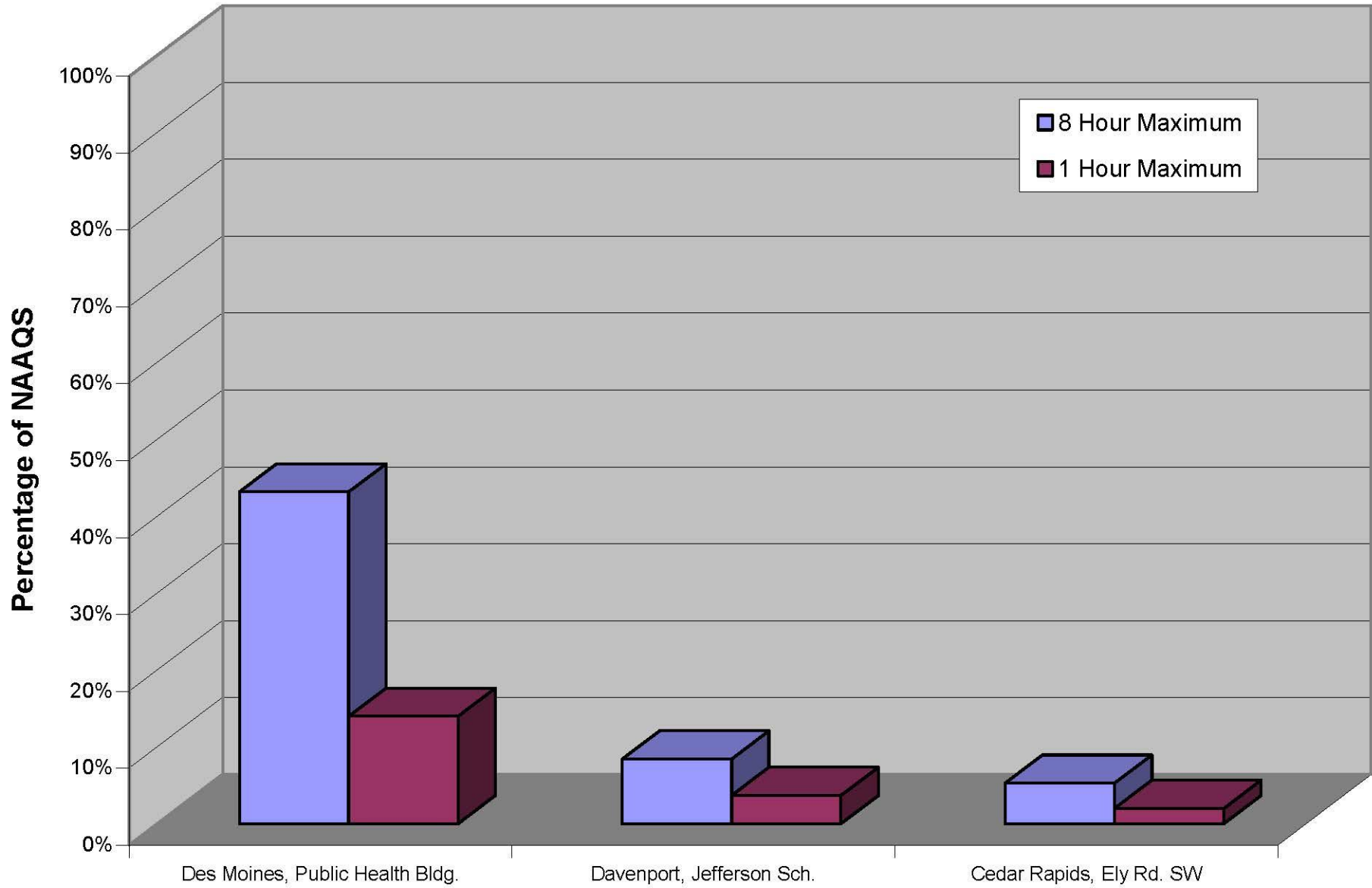
**Carbon Monoxide Monitoring Sites
Site Locations**

Site	Name	City	County	Site Label
191130038	Ely Rd. SW	Cedar Rapids	Linn	Cedar Rapids, Ely Rd. SW
191530030	Public Health Bldg.	Des Moines	Polk	Des Moines, Public Health Bldg.
191630015	Jefferson Elementary	Davenport	Scott	Davenport, Jefferson Sch.

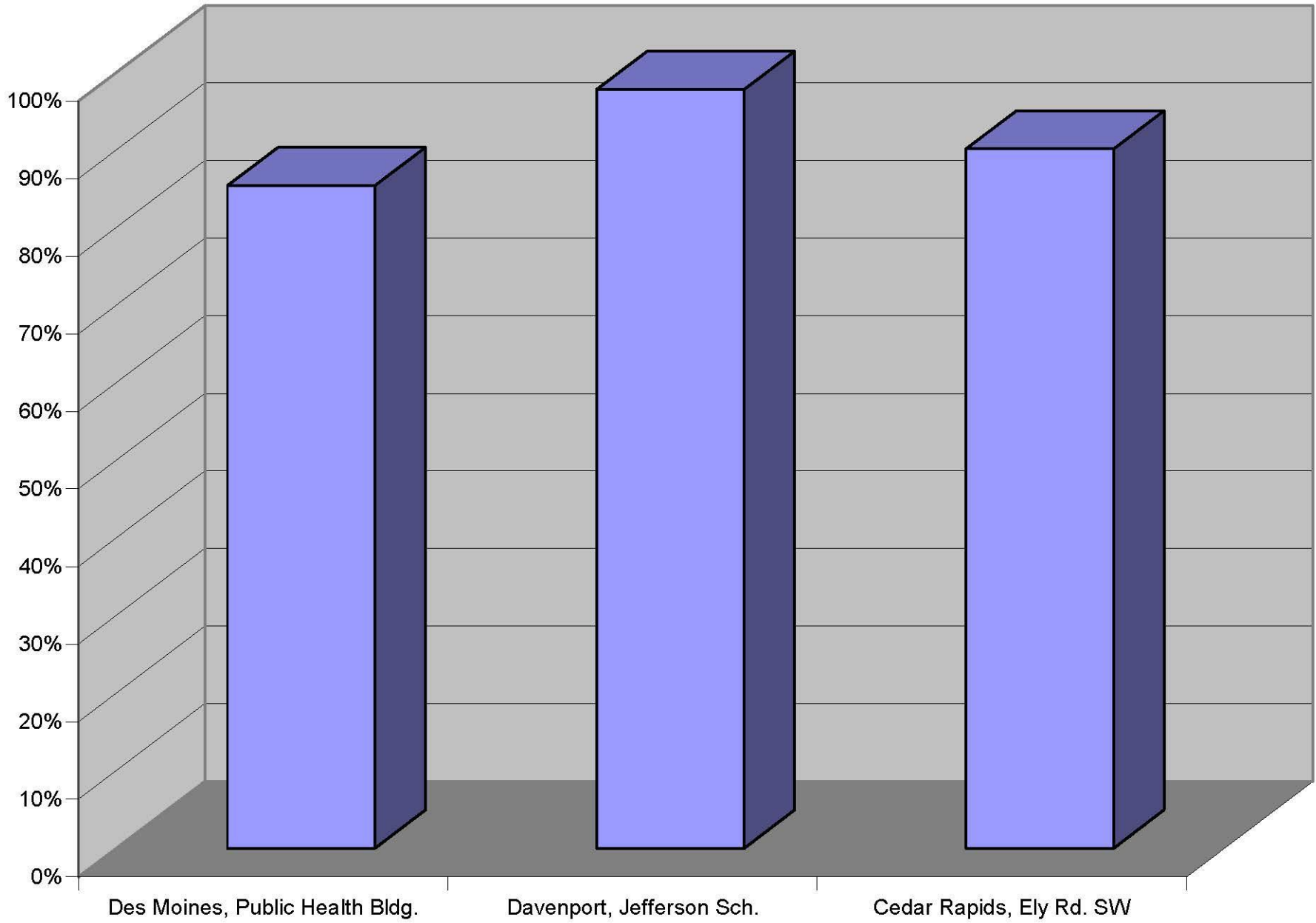
Carbon Monoxide Monitor Locations



Comparison of 2007 Carbon Monoxide Data with National Ambient Air Quality Standards



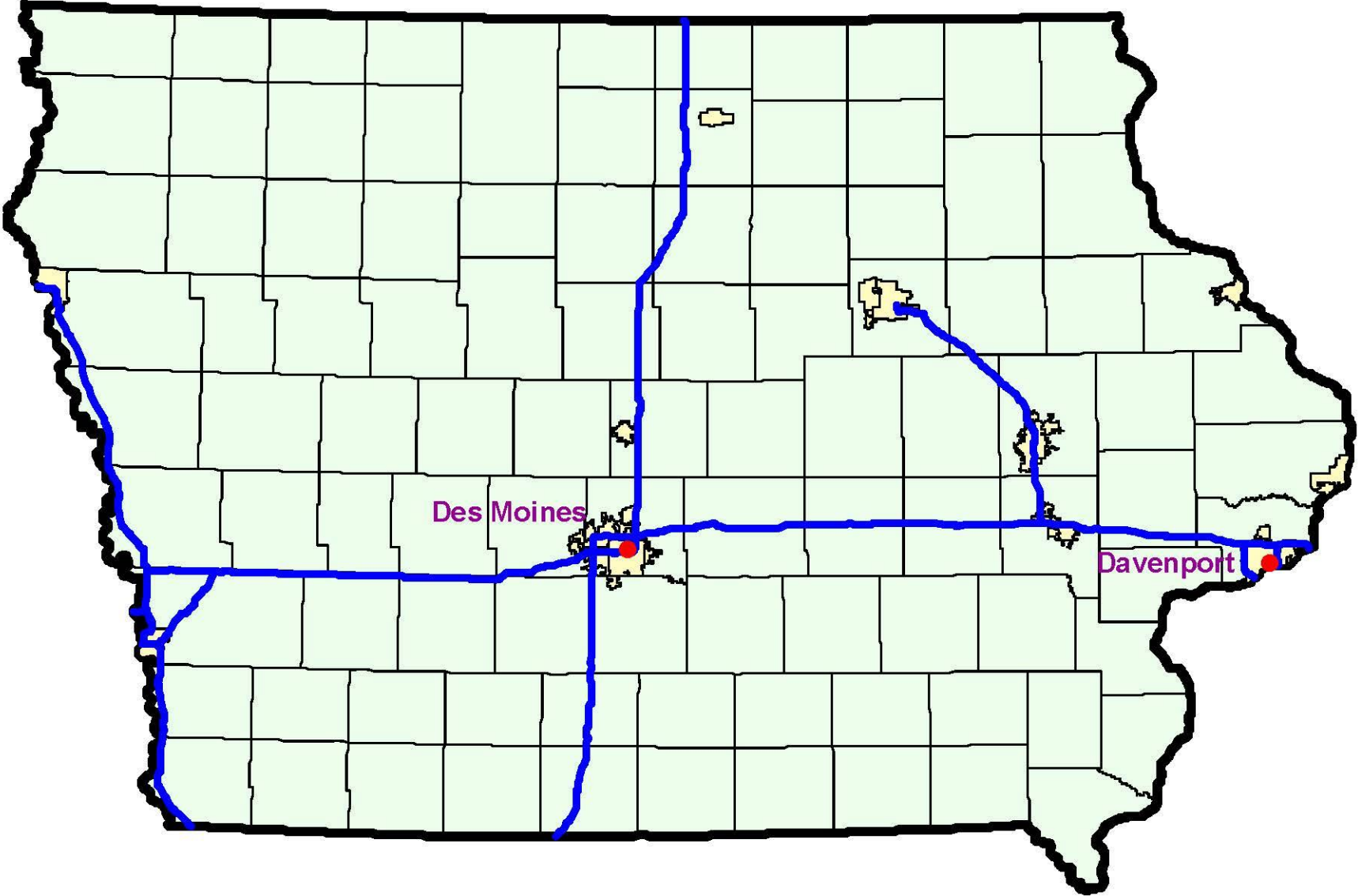
Data Completeness



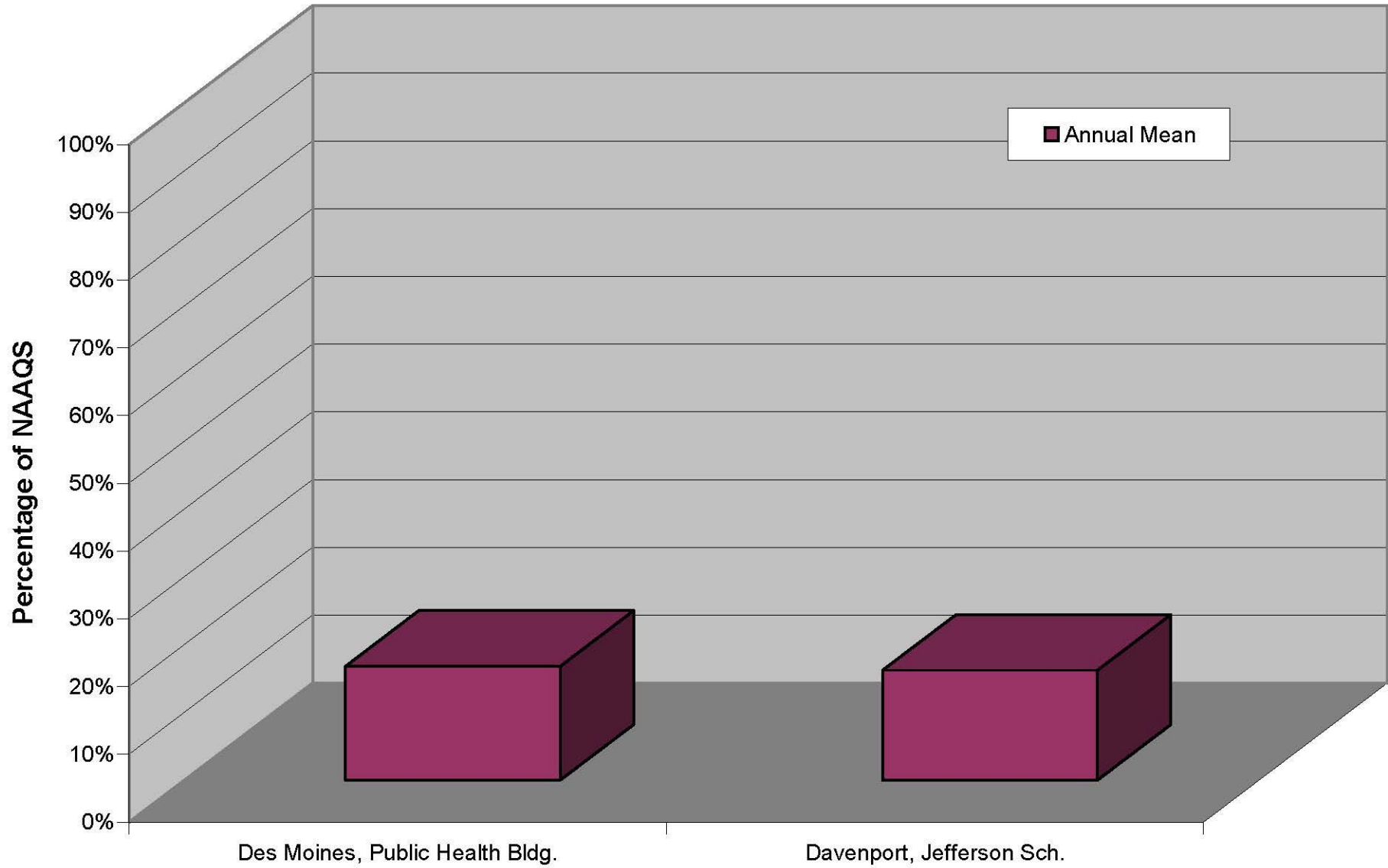
Nitrogen Dioxide Monitoring Sites
Site Locations

Site	Name	City	County	Site Label
191530030	Public Health Bldg.	Des Moines	Polk	Des Moines, Public Health Bldg.
191630015	Jefferson Elementary	Davenport	Scott	Davenport, Jefferson Sch.

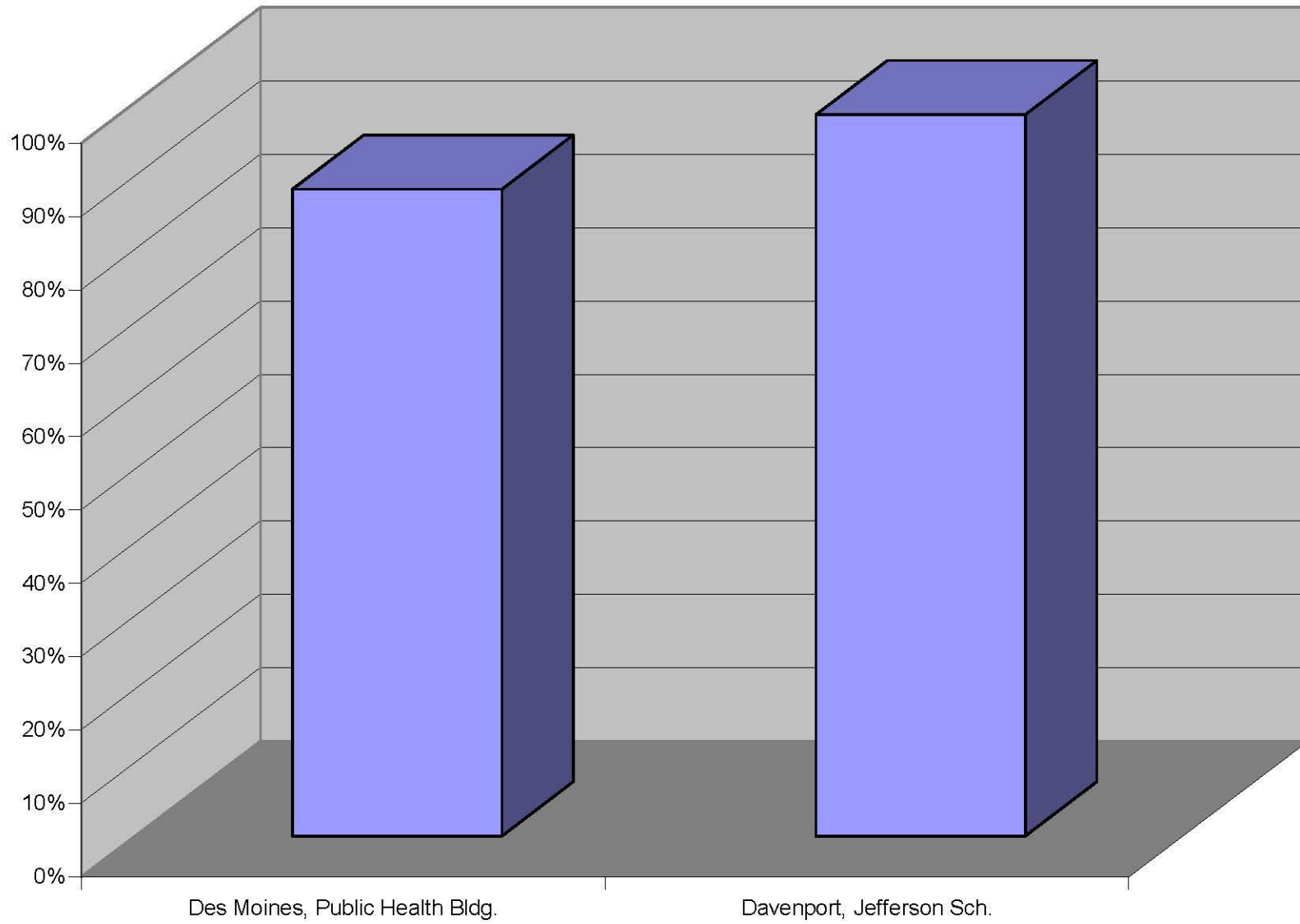
Nitrogen Dioxide Monitoring Locations



Comparison of 2007 Nitrogen Dioxide Data with the National Ambient Air Quality Standards



Data Completeness



Additional Chart Information

Listed below is additional information that may be useful in interpreting the charts contained in this review

Ozone

Comparison of 2007 Ozone Data with National Ambient Air Quality Standards

This graph shows the highest eight-hour ozone average (expressed as a percentage of the 0.085 ppm eight-hour NAAQS) for each ozone monitor operated in 2007.

Data Completeness

This graph shows the total number of valid ozone monitoring days (based on 8-hour average, expressed as a percentage of the total number of days in the ozone season) for each ozone monitor operated in 2007. According to EPA guidelines, an ozone monitoring day is considered valid if at least 75% of the hourly averages for the 8-hour period are available. In the event that less than 75% of the 8-hour averages are available, a day is also counted as a valid day if the daily maximum 8-hour average for that day is greater than the NAAQS. Ozone season runs from April through October; this amounts to 214 days. An ozone monitor that recorded data for all 214 days of the ozone season would have a data capture rate of 100%.

PM2.5

Comparison of 2007 PM2.5 Data with National Ambient Air Quality Standards

This graph shows the highest 24-hour value (expressed as a percentage of the 35.5 $\mu\text{g}/\text{m}^3$ 24-hour NAAQS), and the annual average (expressed as a percentage of the 15.05 $\mu\text{g}/\text{m}^3$ annual NAAQS) for each PM2.5 monitor operated in 2007.

Data Completeness

For each PM2.5 monitor operated in 2007, this graph shows the fraction of scheduled sampling days in 2007 where a PM2.5 sample was actually collected. During 2007, PM2.5 samplers in Iowa were scheduled to operate at a sampling frequency of either one sample every third day (121 scheduled samples) or one sample each day (365 scheduled samples). The sampling frequency of each monitor is indicated in the legend of the graph.

PM10

Comparison of 2007 PM10 Data with National Ambient Air Quality Standards

This graph shows the highest 24-hour value expressed as a percentage of the 155 $\mu\text{g}/\text{m}^3$ 24-hour NAAQS for each PM10 monitor operated in 2007.

Data Completeness

For each PM10 monitor operated in 2007, this graph shows the fraction of scheduled sampling days in 2007 where a PM10 sample was actually collected. During 2007, PM10 samplers in Iowa were scheduled to operate at a frequency of one sample every sixth day (61 scheduled samples), one sample every third day (121 scheduled samples), one sample every other day (182 scheduled samples) or one sample each day (365 scheduled samples). The sampling frequency of each monitor is indicated in the legend of the graph.

Sulfur Dioxide

Comparison of 2007 Sulfur Dioxide Data with National Ambient Air Quality Standards

This graph shows the highest 3-hour value (expressed as a percentage of the 0.55 ppm 3-hour NAAQS), the highest 24-hour value (expressed as a percentage of the 0.145 ppm 24-hour NAAQS), and the annual average (expressed as a percentage of the 0.0305 ppm annual NAAQS) for each sulfur dioxide monitor operated in 2007.

Data Completeness

This graph shows total number of hourly sulfur dioxide values (expressed as a percentage of the total number of hours in 2007) for each sulfur dioxide monitor that operated in 2007. A sulfur dioxide monitor that recorded data for all 8760 hours during 2007 would have a data capture rate of 100%.

Carbon Monoxide

Comparison of 2007 Carbon Monoxide Data with National Ambient Air Quality Standards

This graph shows the highest 1-hour value (expressed as a percentage of the 35.5 ppm 1-hour NAAQS), the highest 8-hour values (expressed as a percentage of the 9.5 ppm 8-hour NAAQS) for each carbon monoxide monitor operated in 2007.

Data Completeness

This graph shows total number of hourly carbon monoxide values (expressed as a percentage of the total number of hours in 2007). A carbon monoxide monitor that recorded data for all 8760 hours during 2007 would have a data capture rate of 100%.

Nitrogen Dioxide

Comparison of 2007 Nitrogen Dioxide Data with National Ambient Air Quality Standards

This graph shows the annual average (expressed as a percentage of the 0.0535 ppm annual NAAQS) for each monitoring site that operated in 2007.

Data Completeness

This graph shows total number of hourly nitrogen dioxide values, expressed as a percentage of the total number of hours in 2007. A nitrogen dioxide monitor that recorded data for all 8760 hours during 2007 would have a data capture rate of 100%.