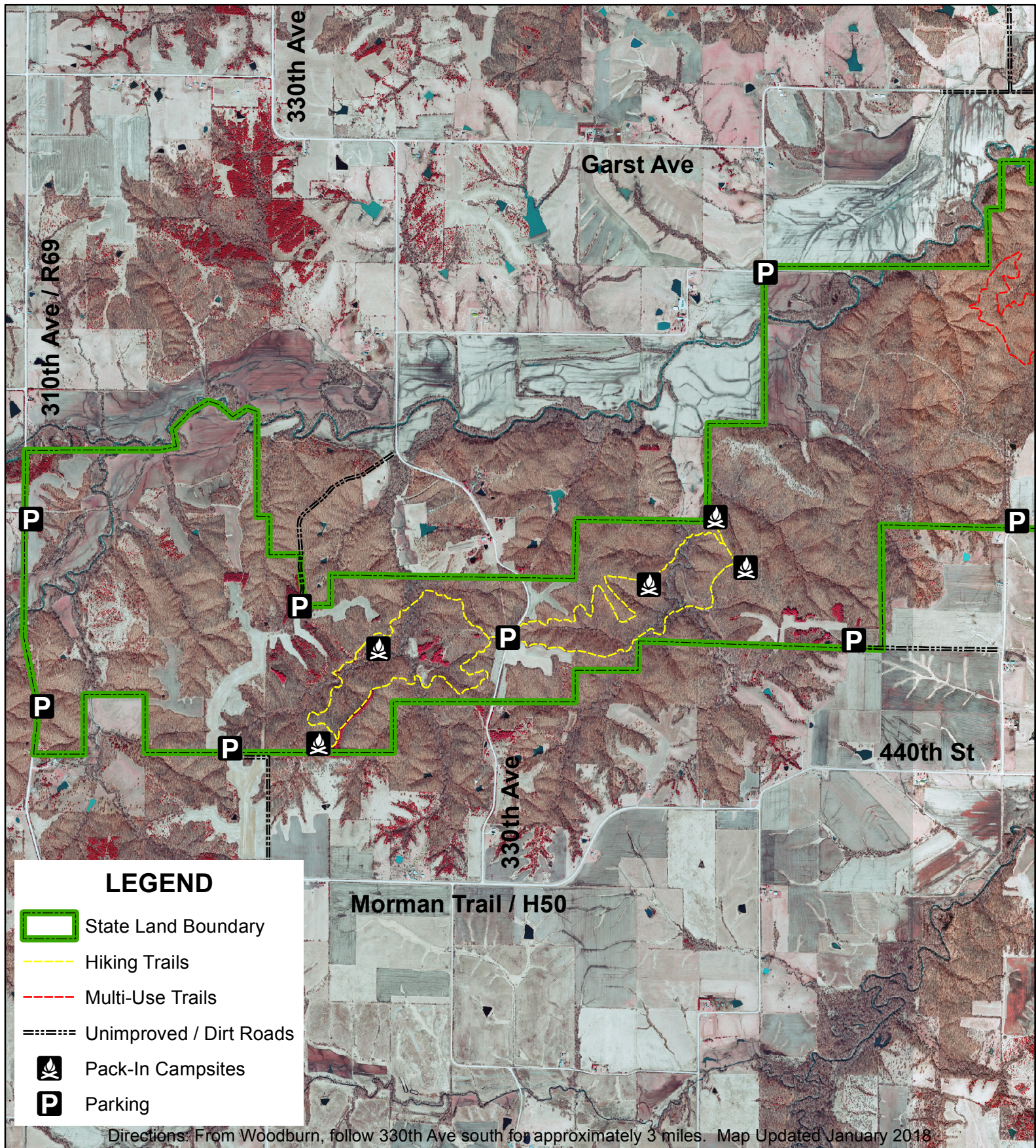



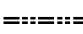




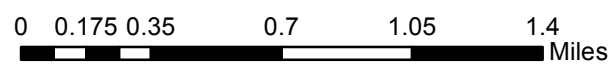
# Stephens State Forest - Woodburn Unit



## LEGEND

-  State Land Boundary
-  Hiking Trails
-  Multi-Use Trails
-  Unimproved / Dirt Roads
-  Pack-In Campsites
-  Parking

Directions: From Woodburn, follow 330th Ave south for approximately 3 miles. Map Updated January 2018



T71N R24W; CLARKE CO, IA & T71N R23W; LUCAS CO, IA  
Woodburn Unit: 2,098 Acres

