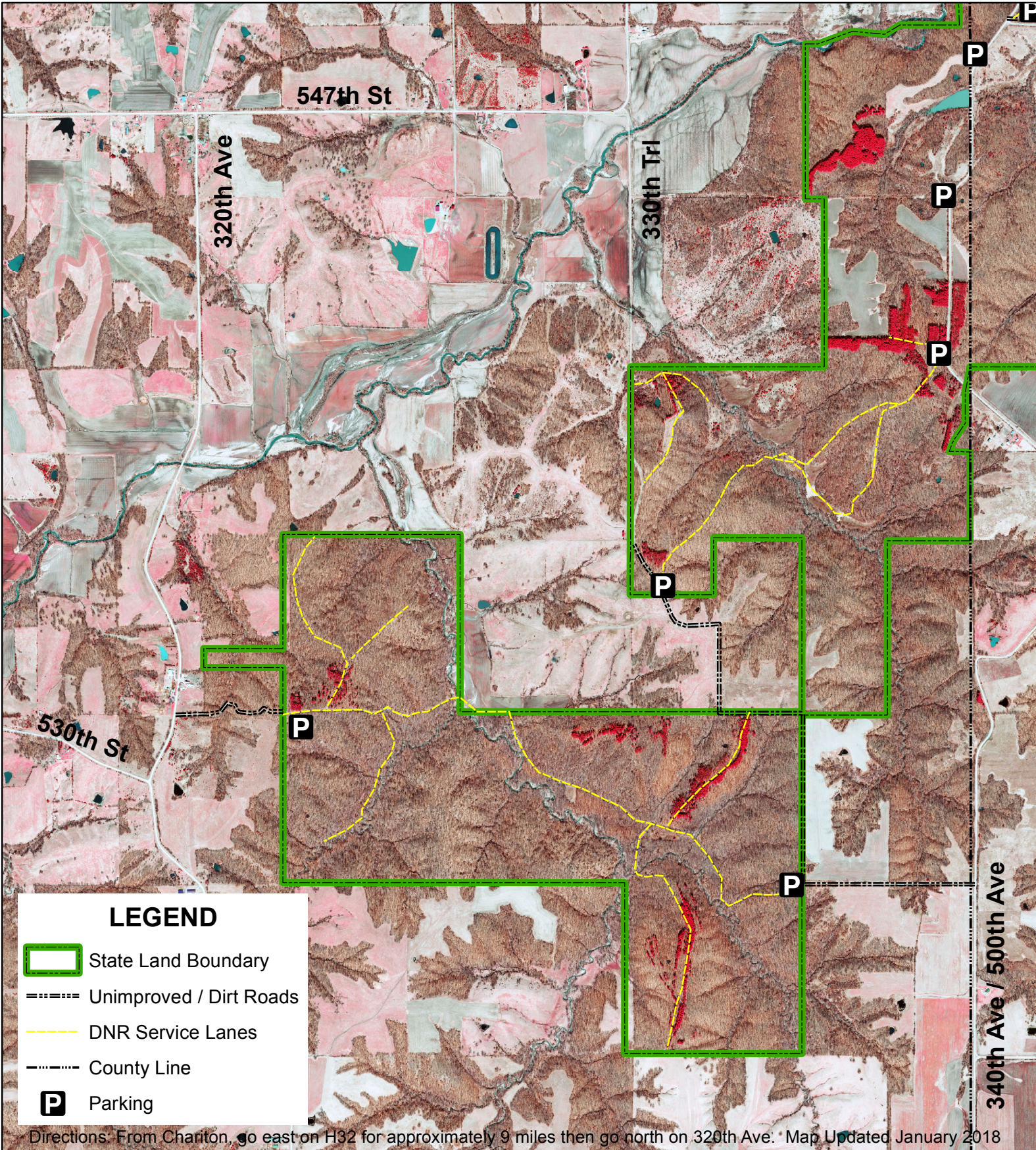
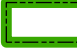
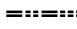

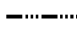



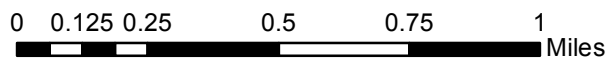
Stephens State Forest - Chariton Unit



LEGEND

-  State Land Boundary
-  Unimproved / Dirt Roads
-  DNR Service Lanes
-  County Line
-  Parking

Directions: From Chariton, go east on H32 for approximately 9 miles then go north on 320th Ave. Map Updated January 2018



T73N R20W; LUCAS CO, IA
Chariton Unit: 1,503 Acres

