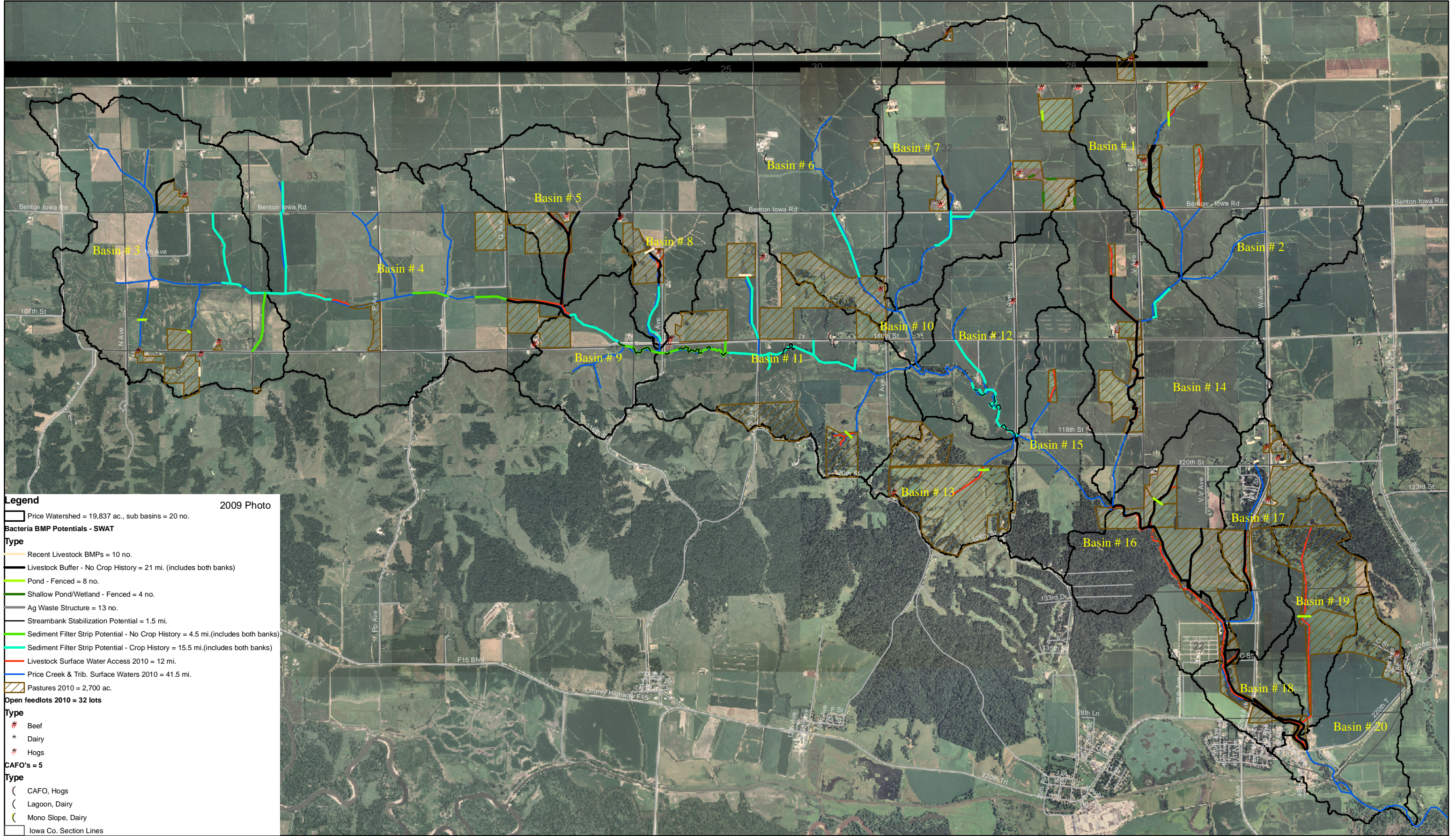


Price Creek, Benton & Iowa Co., IA
Proposed Stream Buffer & Livestock BMPs



Legend 2009 Photo

Price Watershed = 19,837 ac., sub basins = 20 no.

Bacteria BMP Potentials - SWAT

Type

- Recent Livestock BMPs = 10 no.
- Livestock Buffer - No Crop History = 21 mi. (includes both banks)
- Pond - Fenced = 8 no.
- Shallow Pond/Wetland - Fenced = 4 no.
- Ag Waste Structure = 13 no.
- Streambank Stabilization Potential = 1.5 mi.
- Sediment Filter Strip Potential - No Crop History = 4.5 mi.(includes both banks)
- Sediment Filter Strip Potential - Crop History = 15.5 mi.(includes both banks)
- Livestock Surface Water Access 2010 = 12 mi.
- Price Creek & Trib. Surface Waters 2010 = 41.5 mi.
- Pastures 2010 = 2,700 ac.

Open feedlots 2010 = 32 lots

Type

- # Beef
- * Dairy
- * Hogs

CAFO's = 5

Type

- (CAFO, Hogs
- (Lagoon, Dairy
- (Mono Slope, Dairy

Iowa Co. Section Lines

