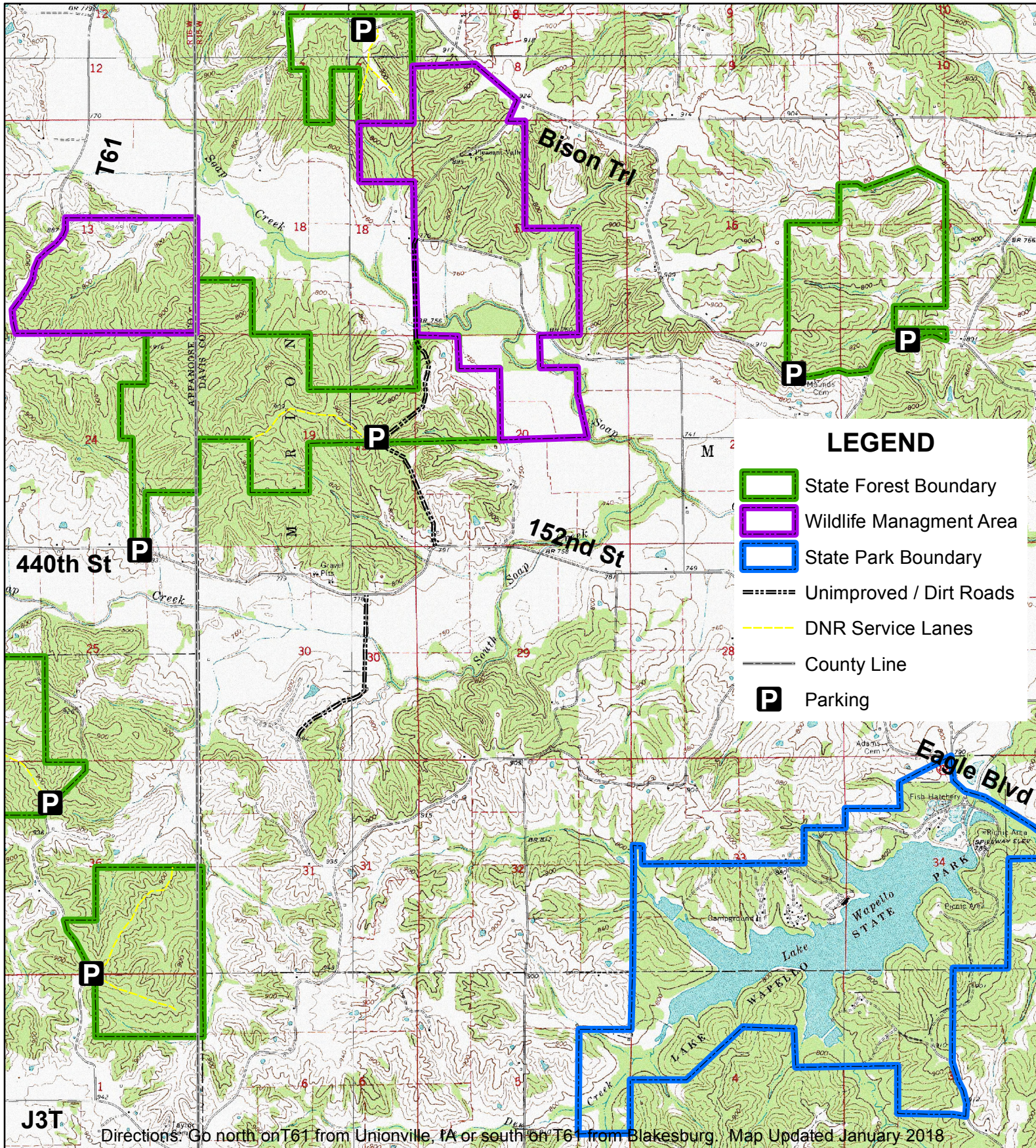


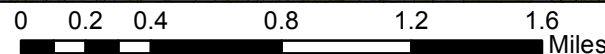
# Stephens State Forest - Unionville Unit (East)



### LEGEND

- State Forest Boundary
- Wildlife Management Area
- State Park Boundary
- Unimproved / Dirt Roads
- DNR Service Lanes
- County Line
- P Parking

Directions: Go north on T61 from Unionville, IA or south on T61 from Blakesburg. Map Updated January 2018

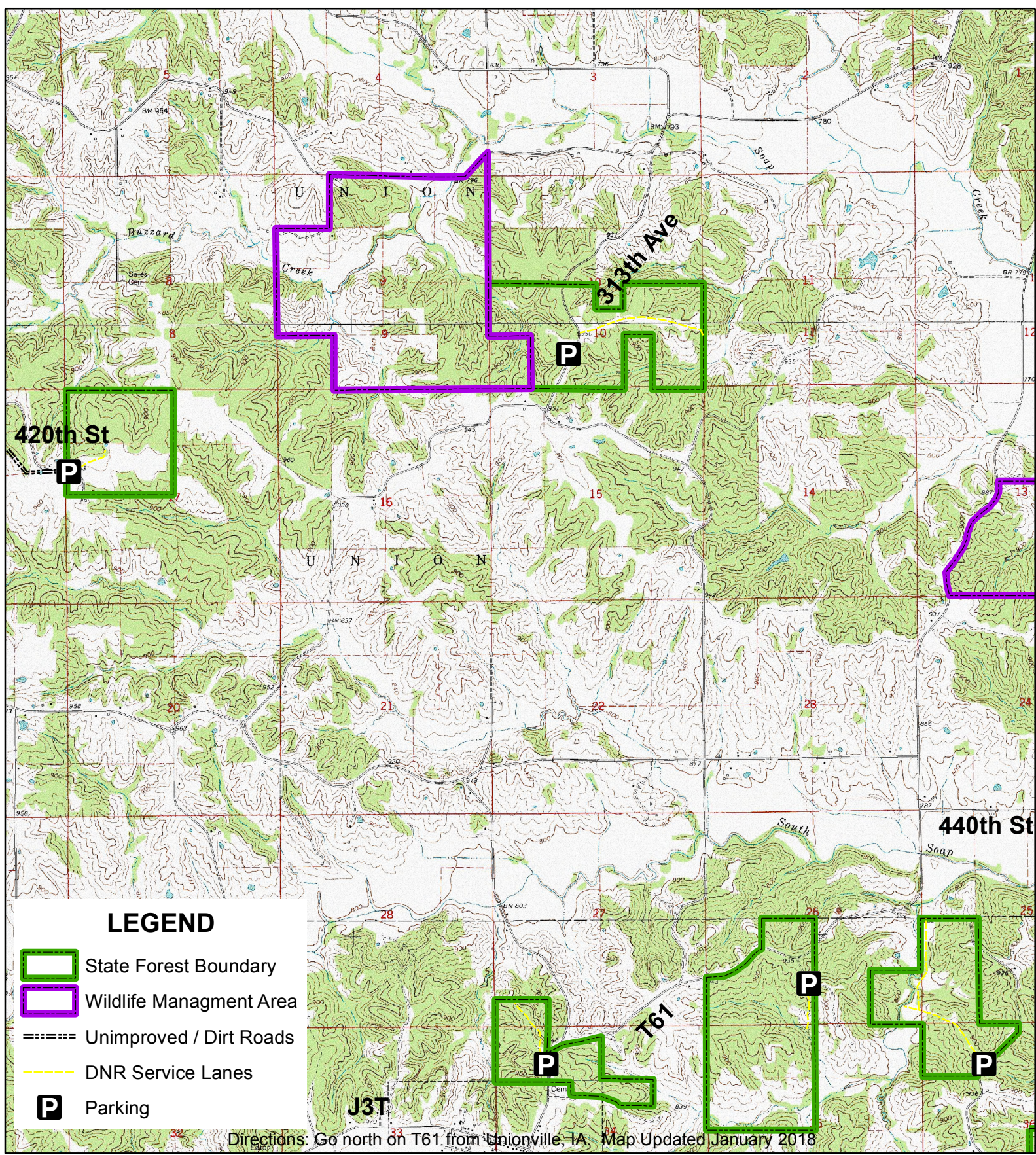


T69N R16W & T70N R16W; APPANOOSE CO, IA  
 T70N R15W; DAVIS CO, IA  
 Unionville Unit: 2,642 Acres



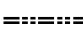






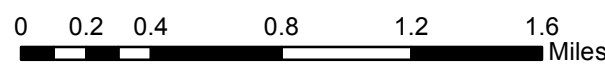
# Stephens State Forest - Unionville Unit (West)



## LEGEND

-  State Forest Boundary
-  Wildlife Management Area
-  Unimproved / Dirt Roads
-  DNR Service Lanes
-  Parking

Directions: Go north on T61 from Unionville, IA. Map Updated January 2018



T69N R16W & T70N R16W; APPANOOSE CO, IA  
 Unionville Unit: 2,642 Acres

