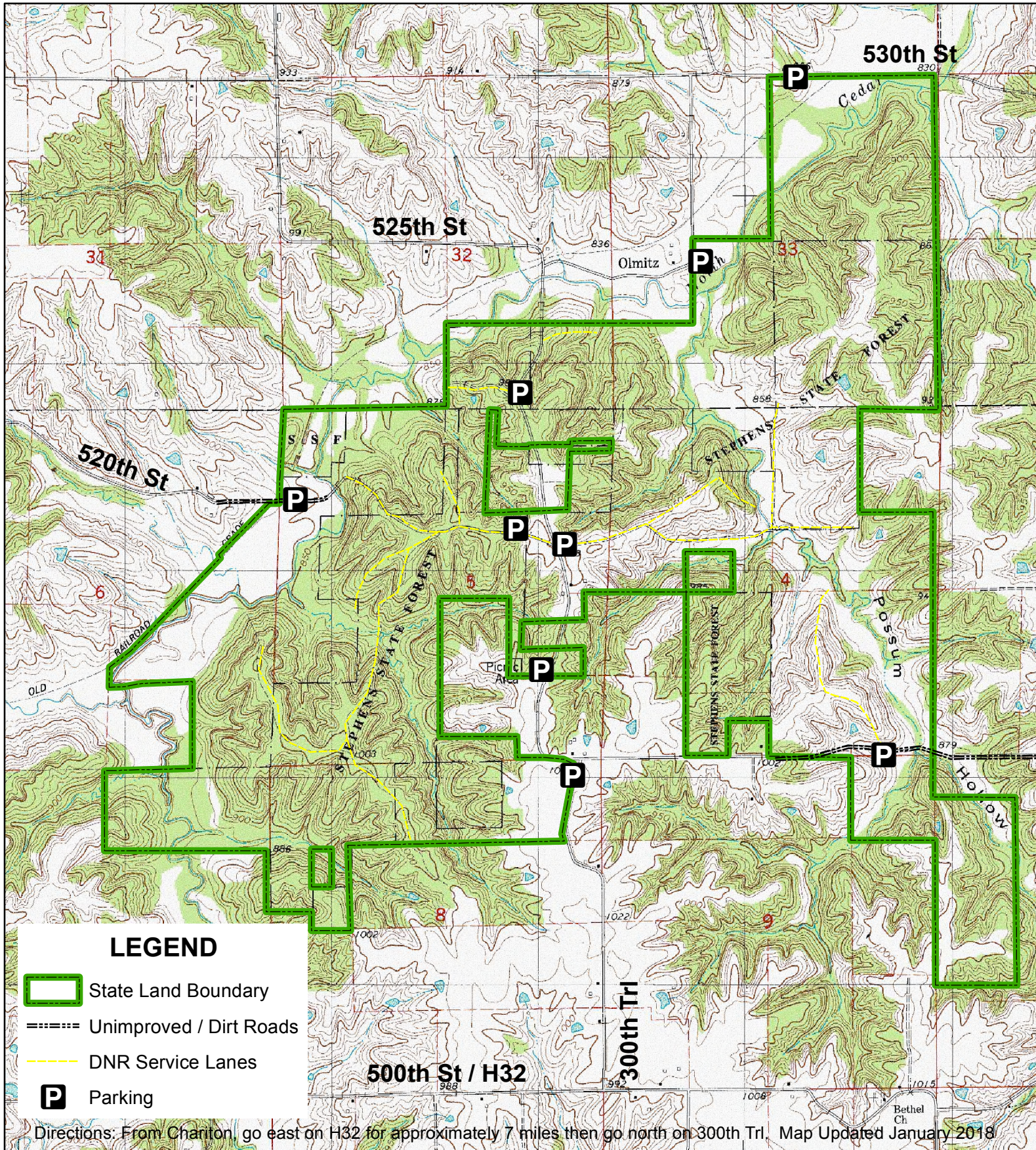

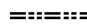




# Stephens State Forest - Cedar Creek Unit



## LEGEND

-  State Land Boundary
-  Unimproved / Dirt Roads
-  DNR Service Lanes
-  Parking

Directions: From Chariton, go east on H32 for approximately 7 miles then go north on 300th Trl. Map Updated January 2018

0 0.125 0.25 0.5 0.75 1 Miles

T72N R20W & T73N R20W; LUCAS CO, IA

Cedar Creek Unit: 2,070 Acres

