

How to Donate to the Chickadee Check-off!

WHERE IS IT?

The Check-offs are located on the Iowa State Tax Forms in Section 9: *Tax Credits and Check-off Contributions*.

HOW DOES IT WORK?

A dollar amount is entered next to one (or more) of the check-offs you wish to donate to—the fish/wildlife fund is listed first.

WILL IT REDUCE MY REFUND?

Yes, the amount donated will automatically be deducted from your tax refund amount (or added to the amount you owe).

HOW MUCH CAN I DONATE?

It must be at least \$1 and must be a whole dollar amount, but other than that, the sky's the limit!

HOW MUCH OF MY DONATION GOES TO WILDLIFE?

Every Penny! The Wildlife Diversity Program receives no state tax funding except for what is donated voluntarily through the check-off program.

IS MY DONATION TAX DEDUCTIBLE?

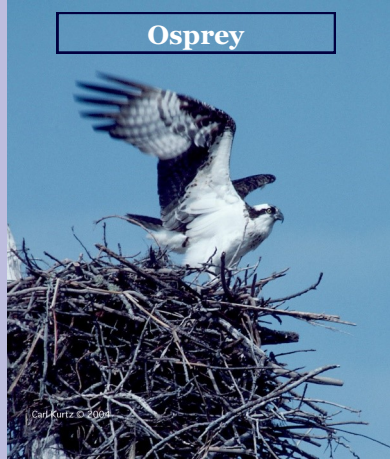
Yes! On next year's tax form.

I WORK WITH A PROFESSIONAL PREPARER OR USE AN ELECTRONIC PROGRAM, HOW DOES THAT WORK?

Most electronic programs should ask about the check-offs as you work your way through the form. With a tax preparer, it works best to tell them you wish to donate up front because many may not ask. If you do miss donating through the check-off, you can donate directly by sending a check to the address on the back of the brochure.

Restored Species

Osprey



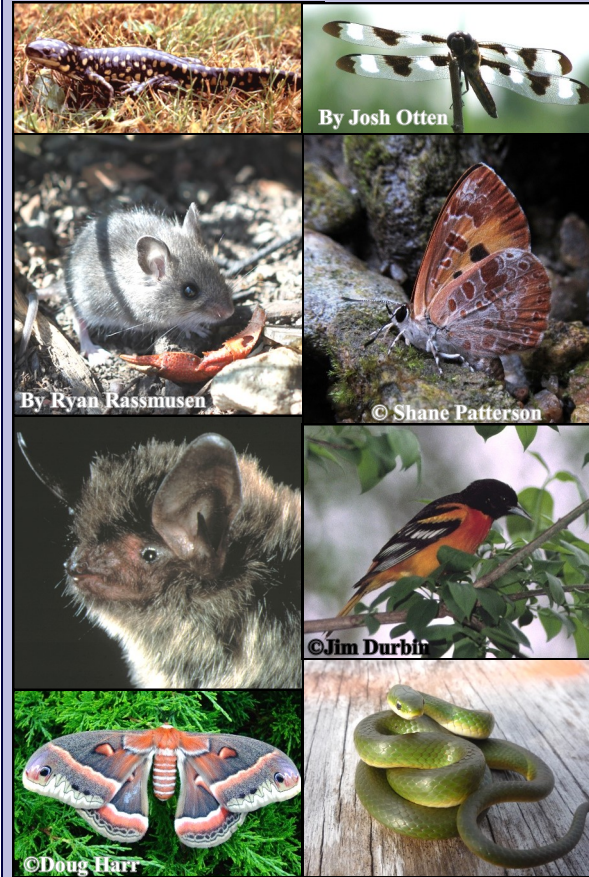
Peregrine Falcon



Trumpeter Swan



Check it and Protect it!



<http://www.iowadnr.gov/wildlifediversity>

Iowa Department of Natural Resources

Wildlife Diversity Program



1436 255th St.
Boone, IA 50036

Phone: (515) 432-2823
Fax: (515) 432-2835

Federal and State law prohibits employment and/or public accommodation (such as access to services or physical facilities) discrimination on the basis of age, color, creed, disability (mental and/or physical), gender identity, national origin, pregnancy, race, religion, sex or sexual orientation. If you believe you have been discriminated against in any program, activity or facility as described above, or if you desire further information, contact the Iowa Civil Rights Commission at 1-800-457-4416, or write to: Director, Iowa Department of Natural Resources, Wallace State Office Building, 502 E. 9th, Des Moines, Iowa 50319-0034.

The Chickadee Check-off



Fish and Wildlife Fund on Iowa's State Tax Form



Providing for Iowa's Wildlife Diversity

What is the Tax Check-off?

The Fish and Wildlife Fund Tax Check-off was the first “check-off” added to the state tax forms by the Iowa State Legislature in 1982.

It’s intent was to allow charitable contributions to be made through the tax form to establish a fund for the conservation of 1000+ species of wildlife in the state of Iowa.

Before the advent of the check-off, all the funding for wildlife preservation in Iowa came from Hunting and Fishing related sources, and as a consequence, work was focused on a few game species. The Chickadee Check-off established a fund for vital work on ALL wildlife in the state.

With the check-off in place the Iowa Department of Natural Resources established the Wildlife Diversity Program which relies on the check-off funding to this day!

Since 1982, three additional check-offs have been added to the fund including ones for the State Fair, Child Abuse Prevention and Firefighters.

The check-off has the potential to provide tremendous funding for these worthy causes. If every Iowa taxpayer donated just \$1 it would mean \$1.5 million for our Natural Resources!



Iowa’s Wildlife Diversity Program

Program Goals

- Maintain wildlife diversity in Iowa.
- Provide guidance in land management for conservation of all wildlife species.
- Encourage public awareness and enjoyment of Iowa’s nongame wildlife species.
- Maintain and develop funding for wildlife diversity programs.

Our Focus

- **Research & Surveys**– provide important information about wildlife populations.
- **Land acquisition**– provide habitat for rare, endangered or declining species, and provide opportunities for wildlife appreciation.
- **Education**– foster appreciation for wildlife through public events and publications.
- **Management**– work with public land managers & private landowners to provide habitat for wildlife.
- **Re-introductions**– restore depleted native wildlife species to Iowa such as the Osprey, Peregrine Falcon, Trumpeter Swan, River Otter, and Greater Prairie-chicken.

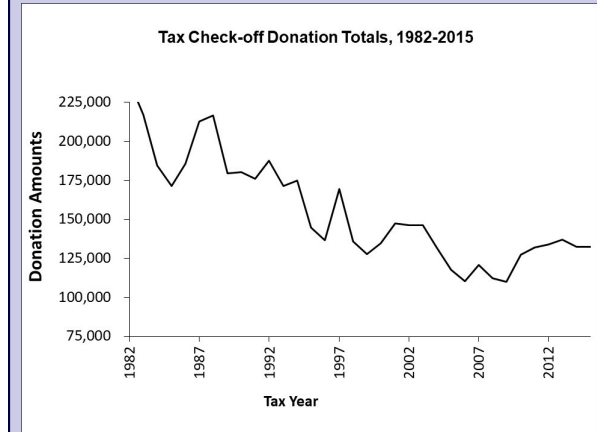
Leading Iowans to Care for our Diverse Wildlife Heritage

Recent and Current Projects

- Monitoring frogs and toads, Bald Eagles, and colonial water birds through the Volunteer Wildlife Monitoring Program (VWMP).
- Developing and designating a statewide system of Bird Conservation Areas (BCAs).
- Multiple Species Inventory and Monitoring (MSIM) program. MSIM is a standardized, statewide survey that provides a basic inventory of Iowa’s wildlife. A baseline for long-term monitoring of IA wildlife populations.
- Leading Monarch Butterfly conservation efforts in Iowa and nationwide.
- Enhancing native remnant prairies and Wood Turtle stream habitat on public and private land.
- Partnering with ISU Wildlife Extension to create and publish a Guide to Iowa’s Mammals.
- Creating and implementing Iowa’s Wildlife Action Plan, a 30 year plan for wildlife diversity and habitat conservation in Iowa.
- Creating and implementing a Barn Owl Recovery Plan.

Visit www.iowadnr.gov/wildlifediversity

How’s the Check-off Doing?



At it’s peak in the mid-1980s the Chickadee Check-off brought in over \$200,000 a year. It has overall declined since that time, and it has leveled off at around \$130,000 the last few years.

The number of people donating has also been declining and now averages around 8,000 people. The average donation amount per person is between \$14-18.

Currently one half of 1% of Iowa taxpayers donate to the Chickadee Check-off. Increasing the amount of people that donate, even if they are donating a few dollars apiece, would make a world of difference for wildlife conservation in Iowa . 100% of the funds go directly to the Wildlife Diversity Program!

