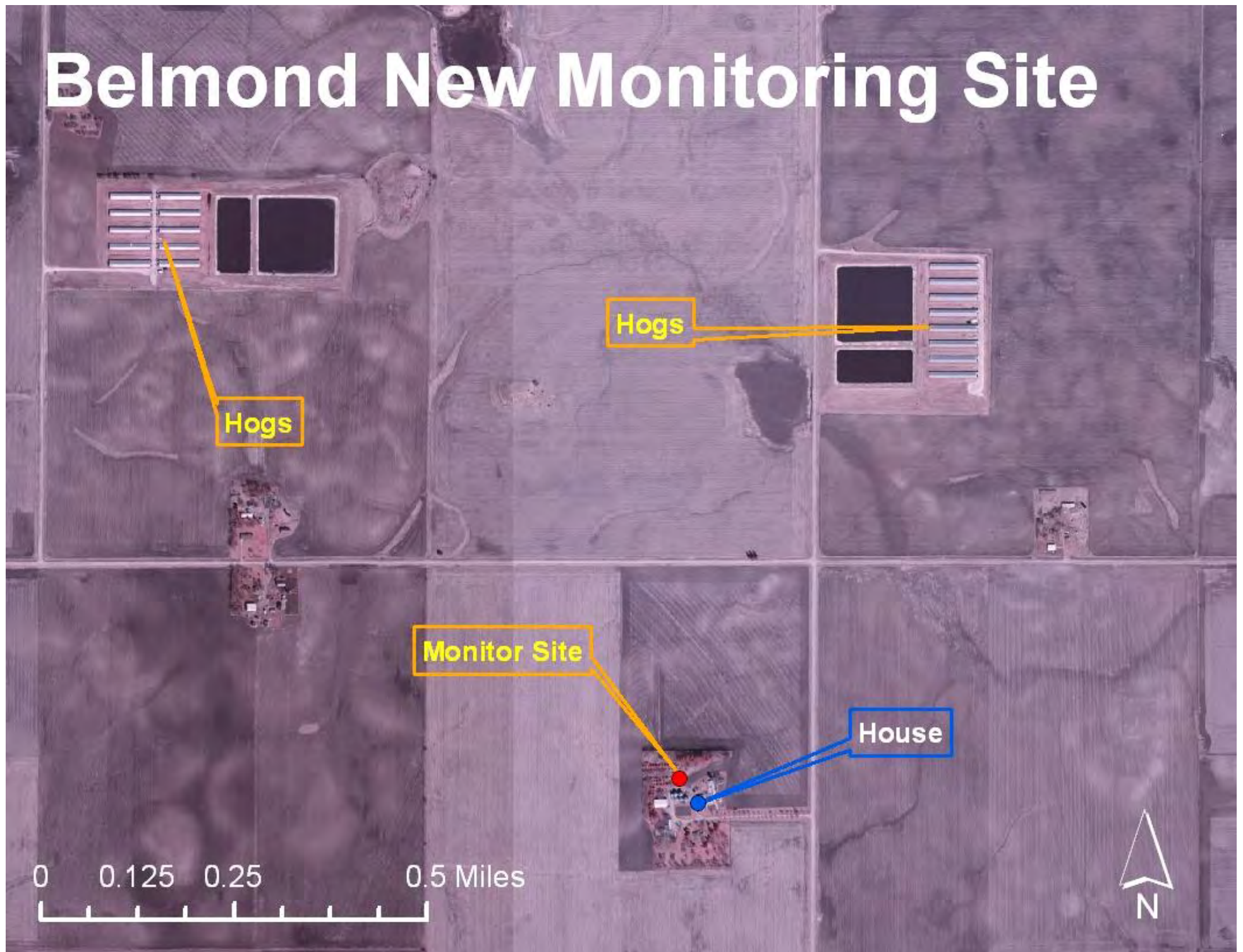


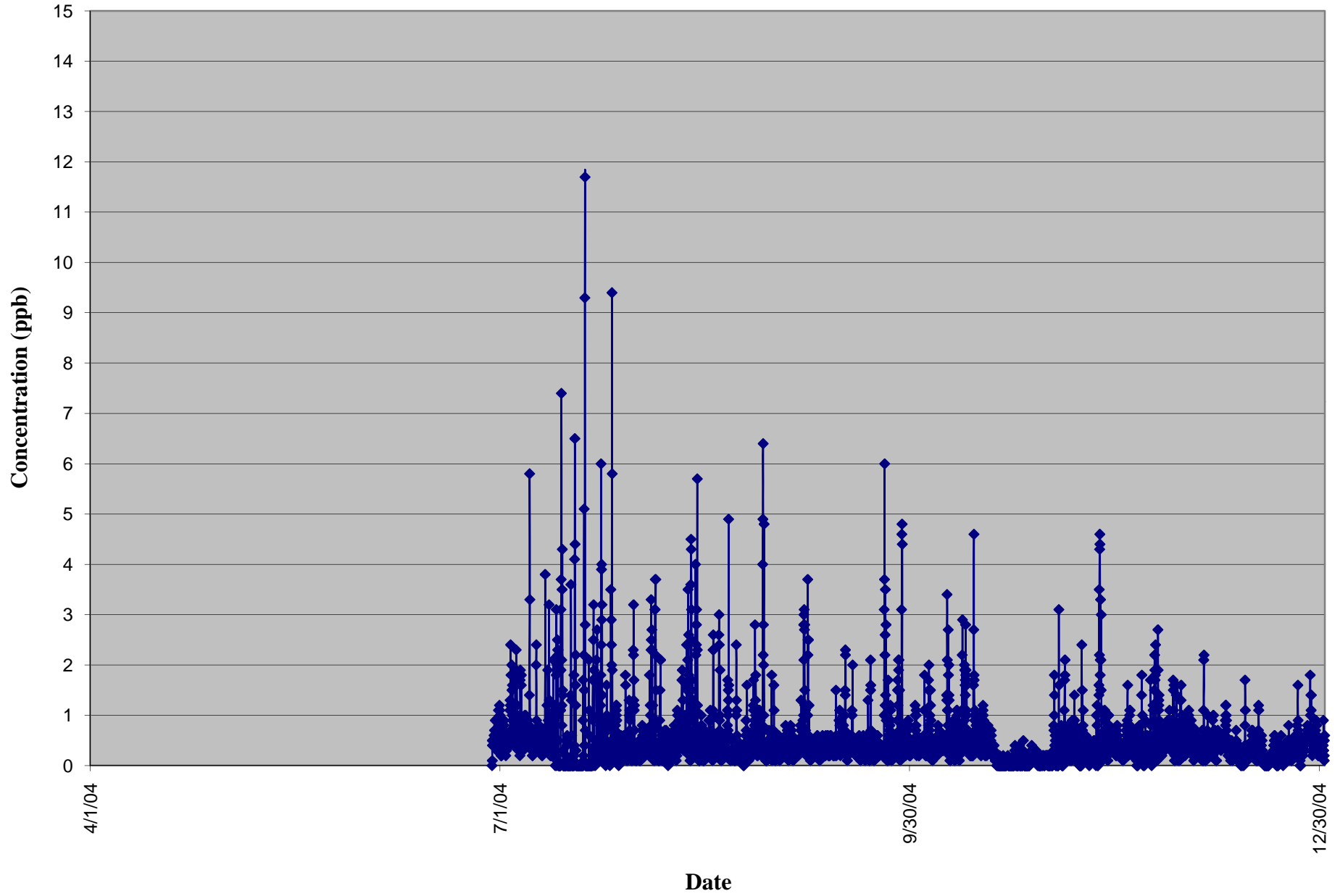
Belmond New

The “Belmond New” monitoring site was located in Wright County, Iowa. Monitoring for ammonia and hydrogen sulfide at the Belmond New site began on June 29, 2004. Monitoring for both gases ended on December 31, 2007. The site was located near the Iowa Select Farms - Buseman and Iowa Select Farms - Halfpop Swine Finishing operations which were permitted for 2,310,000 and 2,475,000 pounds of livestock respectively. The monitors were moved from the Belmond Old location to a property farther from the Buseman CAFO; still located in ambient air, on property associated with a residence, and near a house. Data for Belmond New was retrieved using an AQS identification number of 19-197-0007.

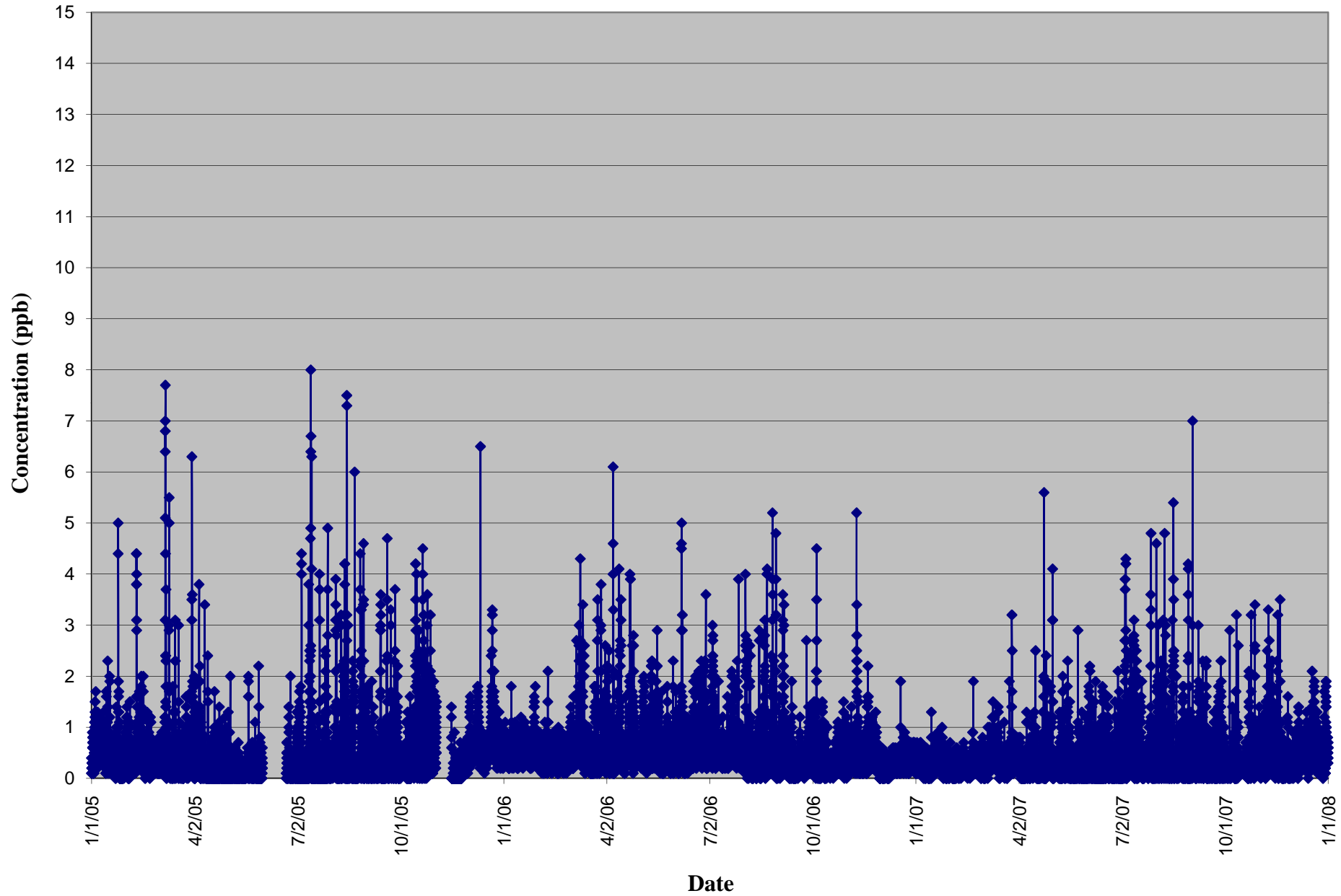
Belmond New Monitoring Site



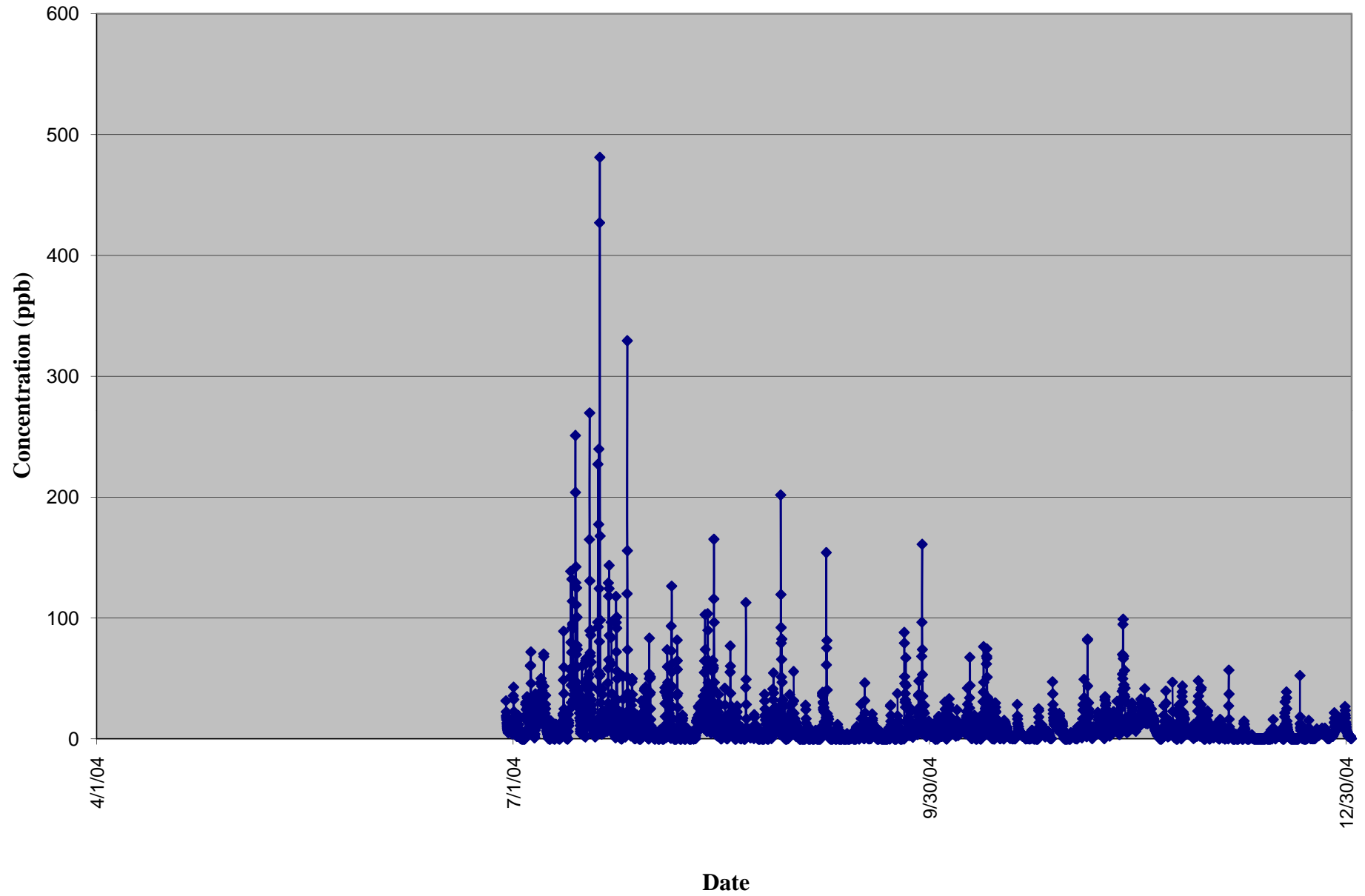
Belmond New CAFO: Hydrogen Sulfide vs Time (2004)



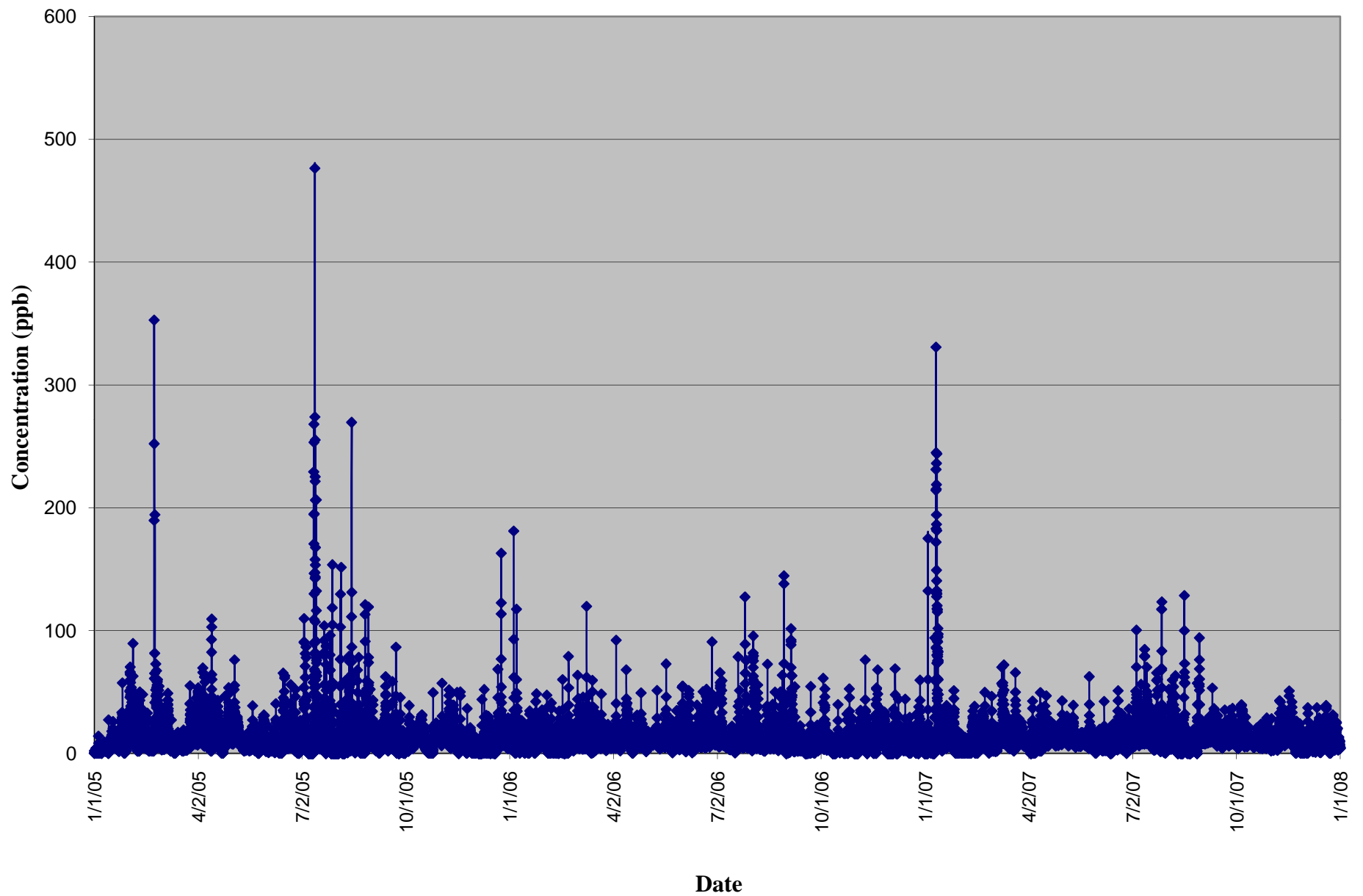
Belmond New CAFO: Hydrogen Sulfide vs Time (2005-2007)



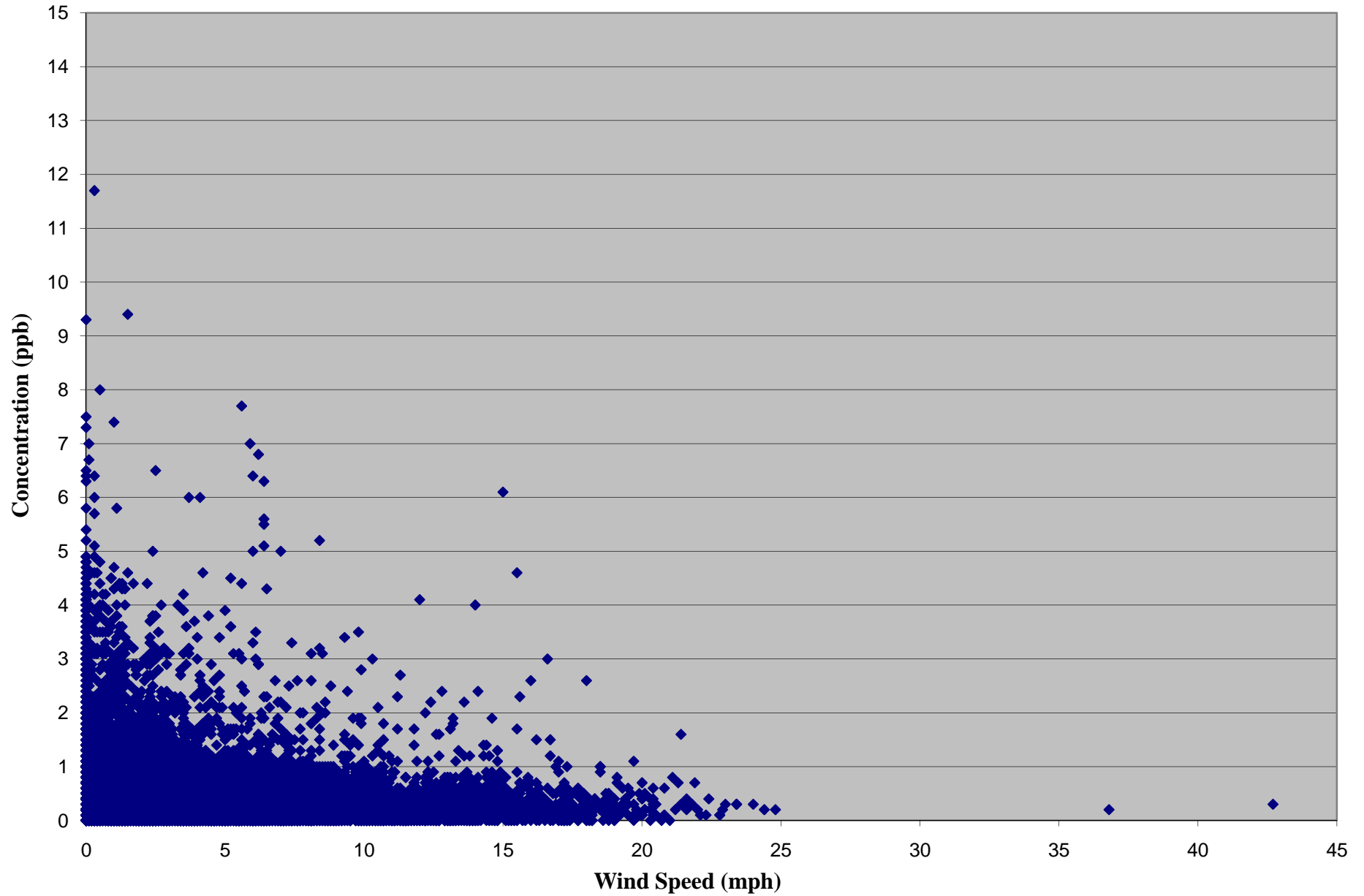
Belmond New CAFO: Ammonia vs Time (2004)



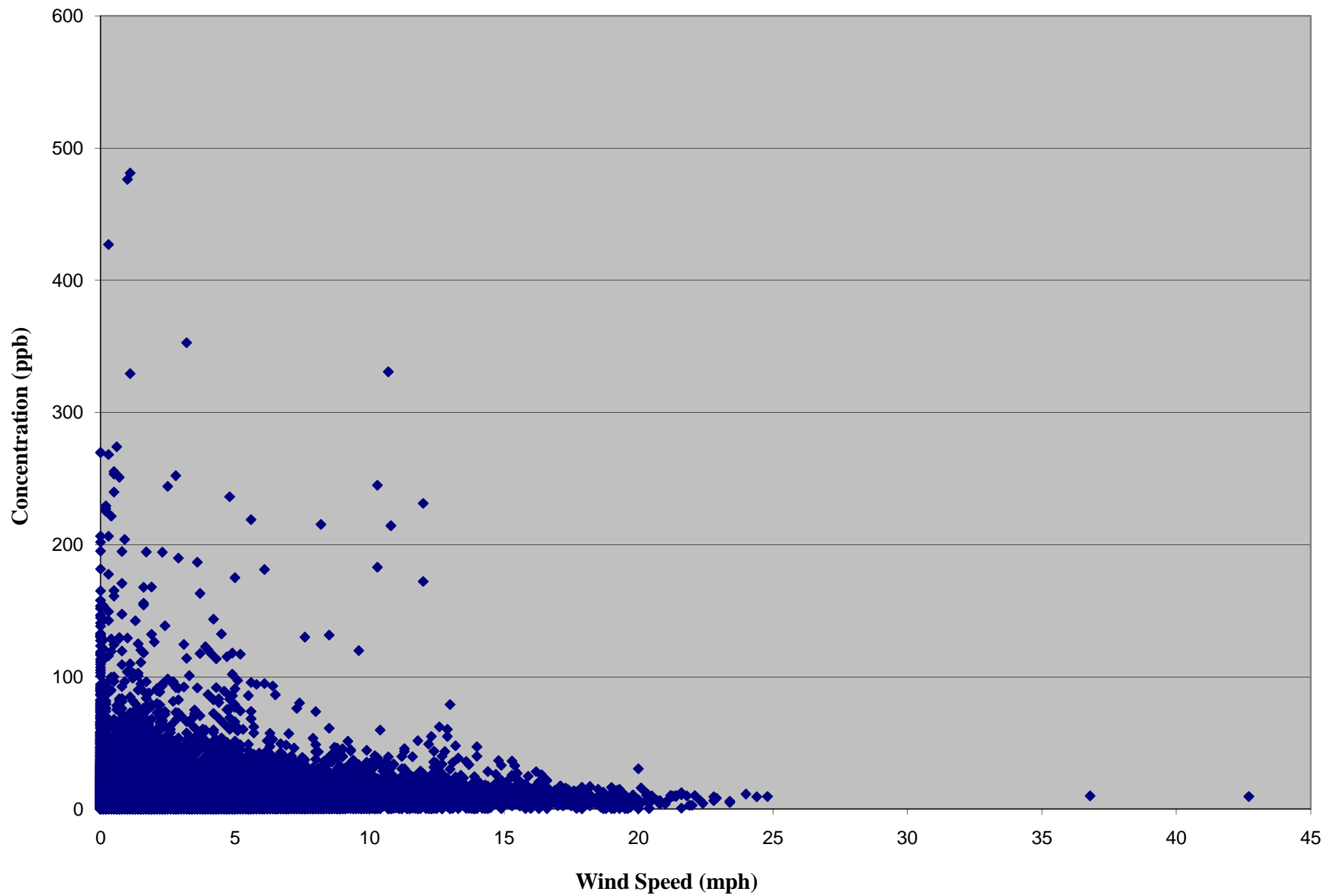
Belmond New CAFO: Ammonia vs Time (2005-2007)



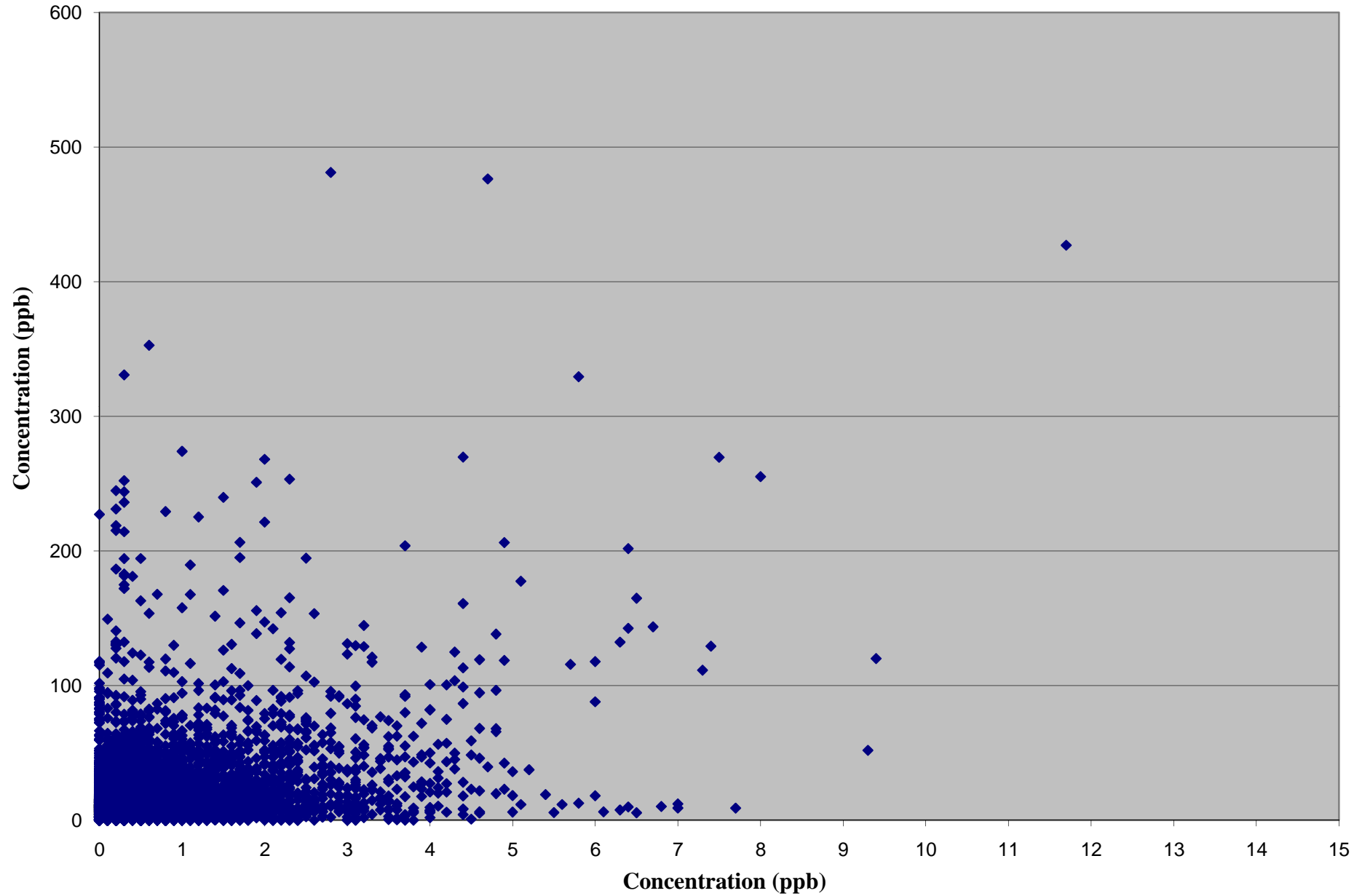
Belmond New CAFO: Hydrogen Sulfide vs Wind Speed (2004-2007)



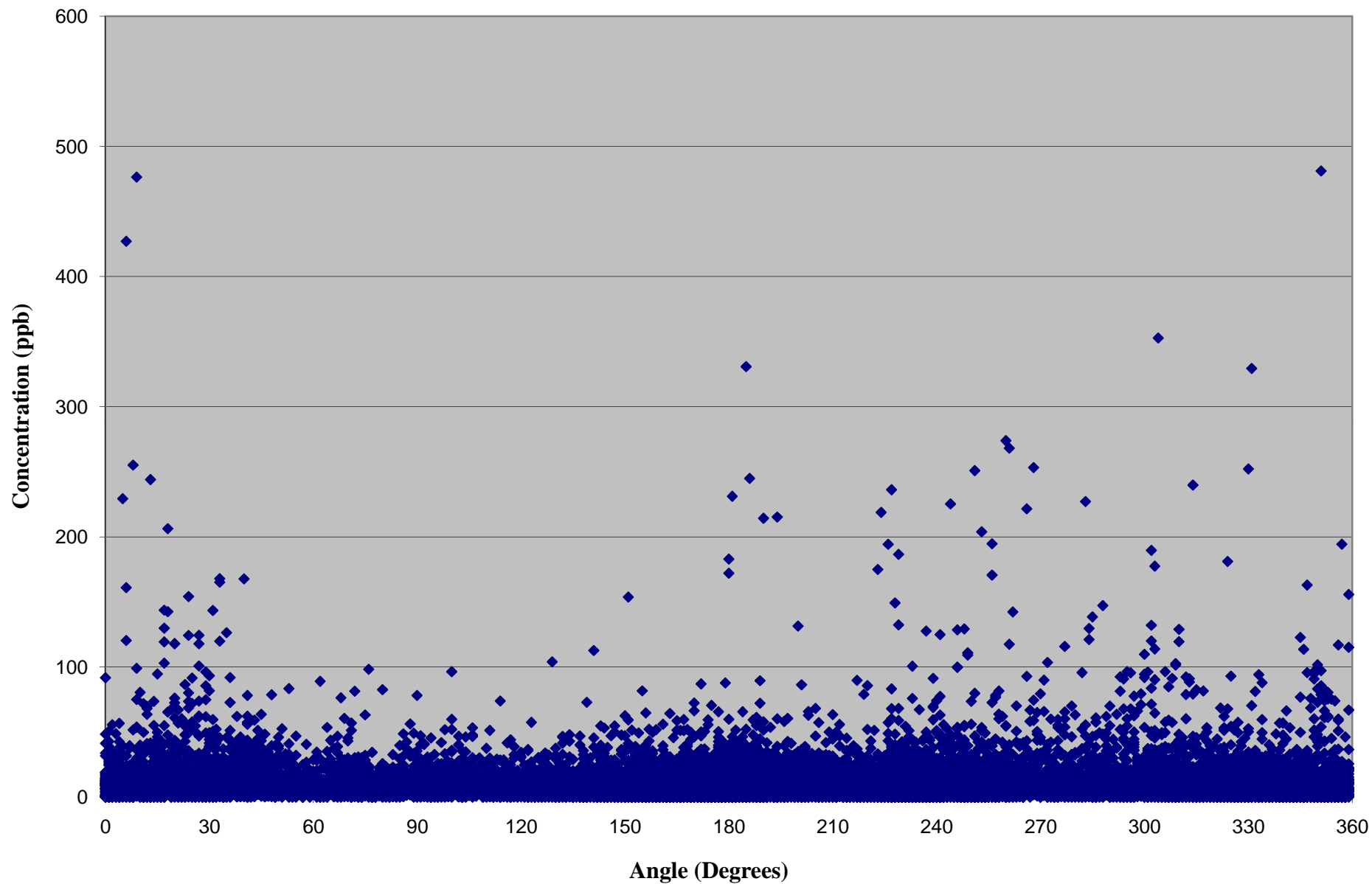
Belmond New CAFO: Ammonia vs Wind Speed (2004-2007)



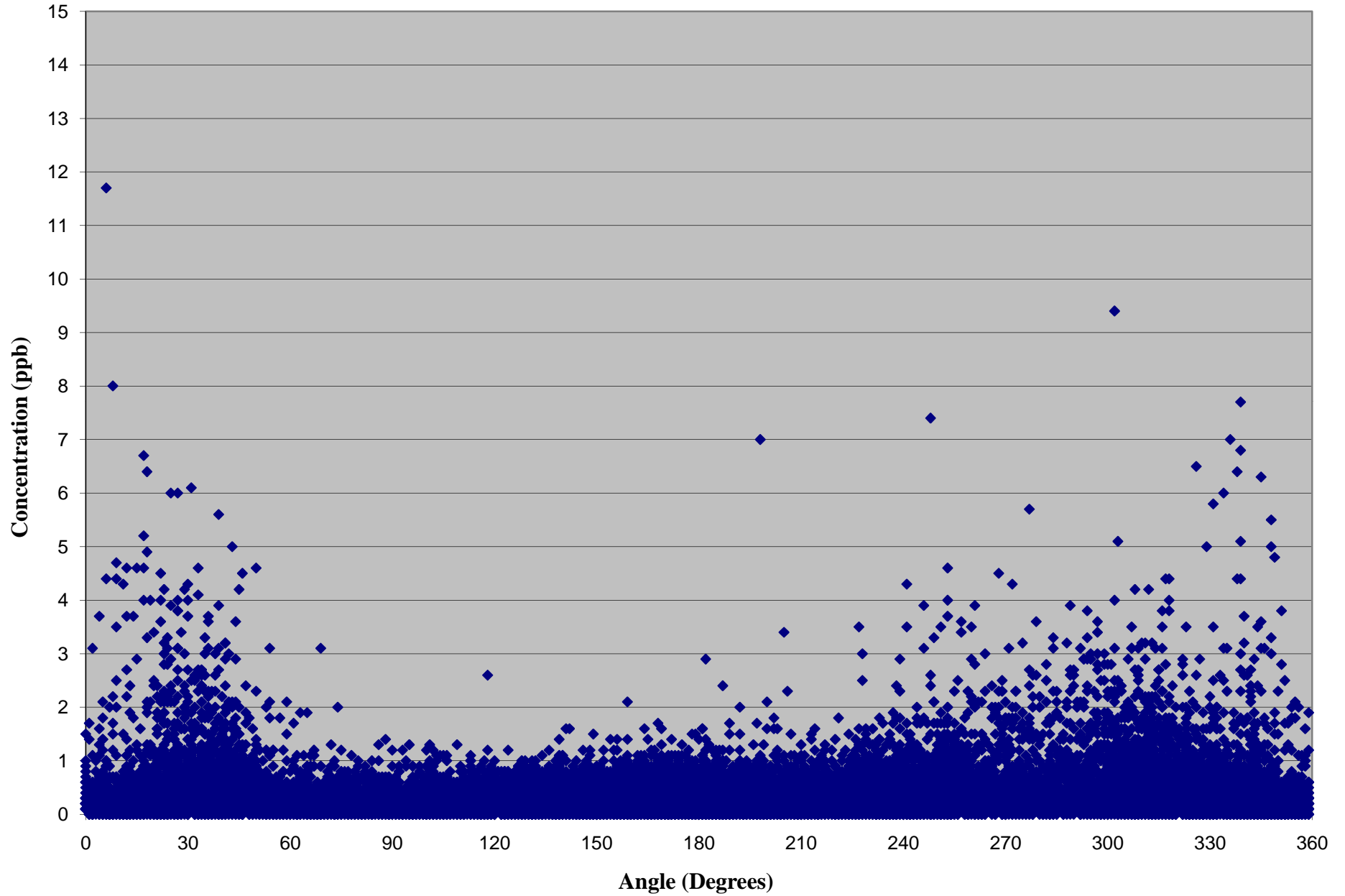
Belmond New CAFO: Ammonia vs Hydrogen Sulfide (2004-2007)



Belmond New CAFO: Ammonia vs Wind Direction (2004-2007)



Belmond New CAFO: Hydrogen Sulfide vs Wind Direction (2004-2007)



Belmond New CAFO: Wind Speed vs Wind Direction (2004-2007)

