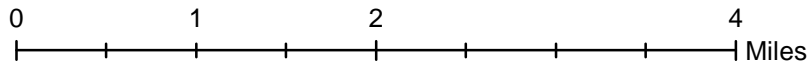
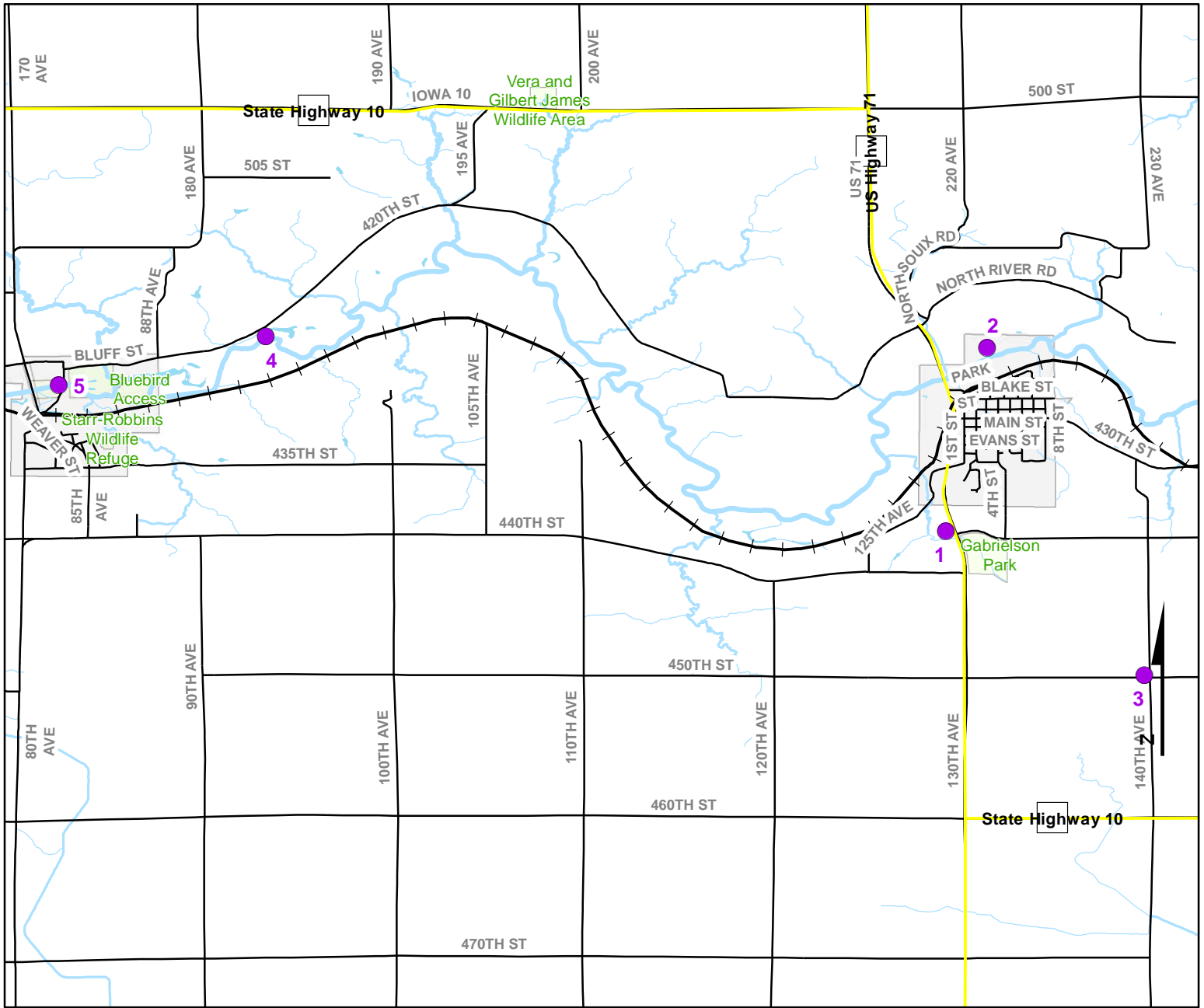




Volunteer Wildlife Monitoring Program (VWMP) Frog and Toad Survey

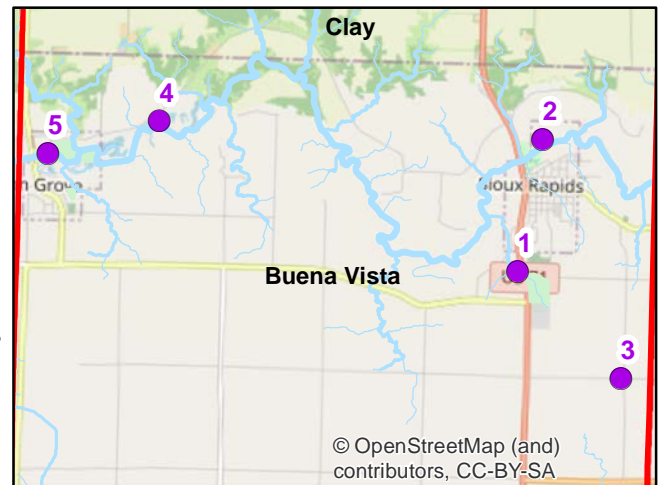
Route ID: 317 County: Buena Vista



Legend

----- Trails

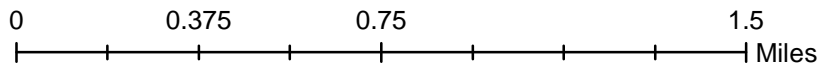
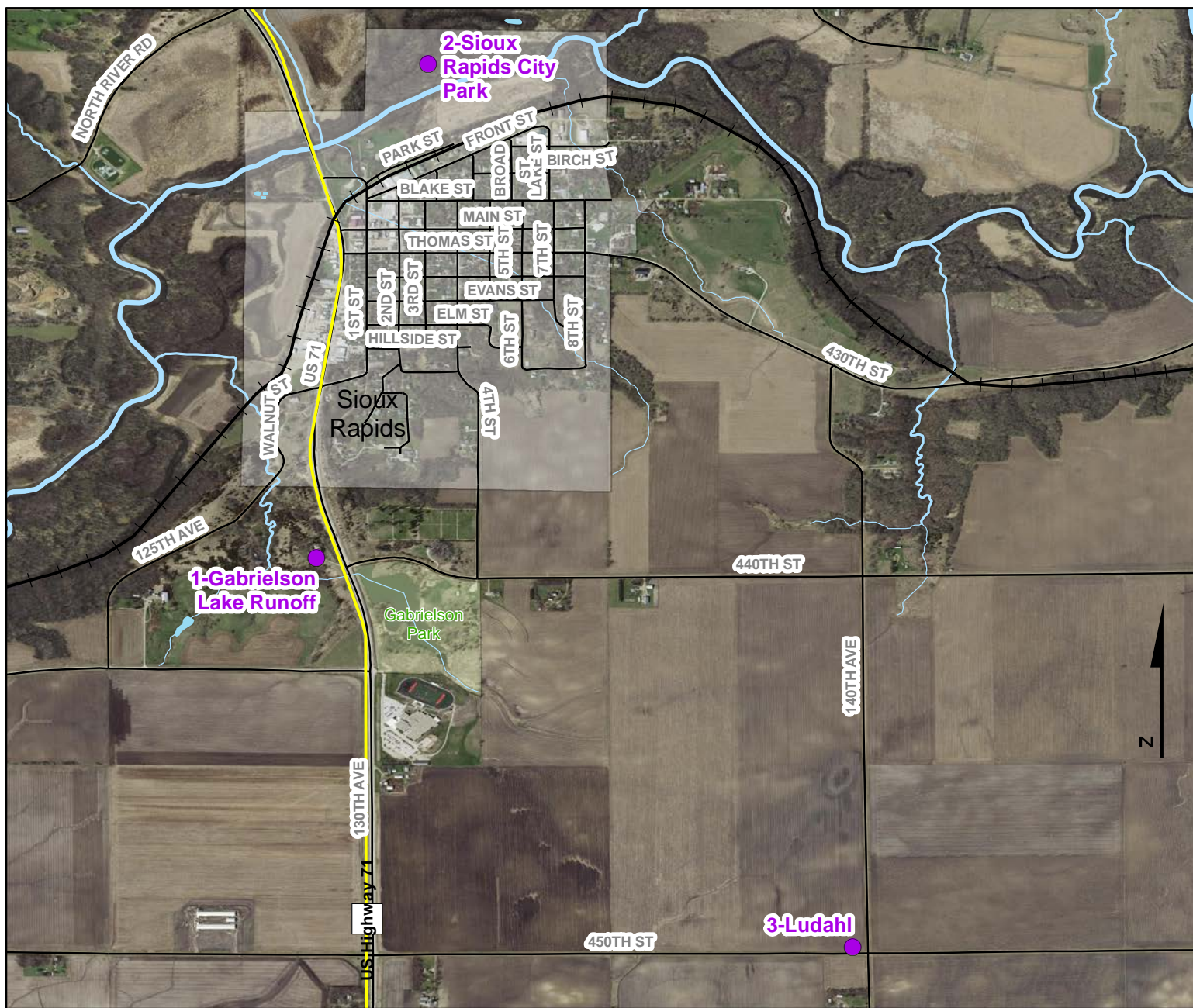
● Survey Stops



Volunteer Wildlife Monitoring Program (VWMP) Frog and Toad Survey

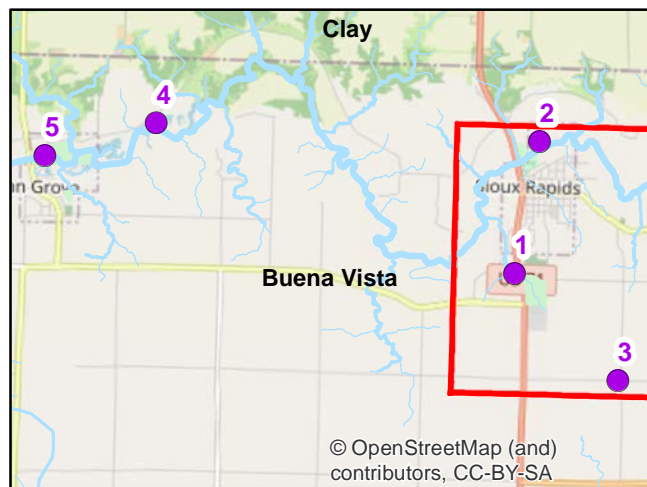


Route ID: 317 County: Buena Vista



Legend

- Trails
- SurveyStops

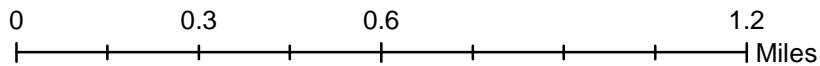
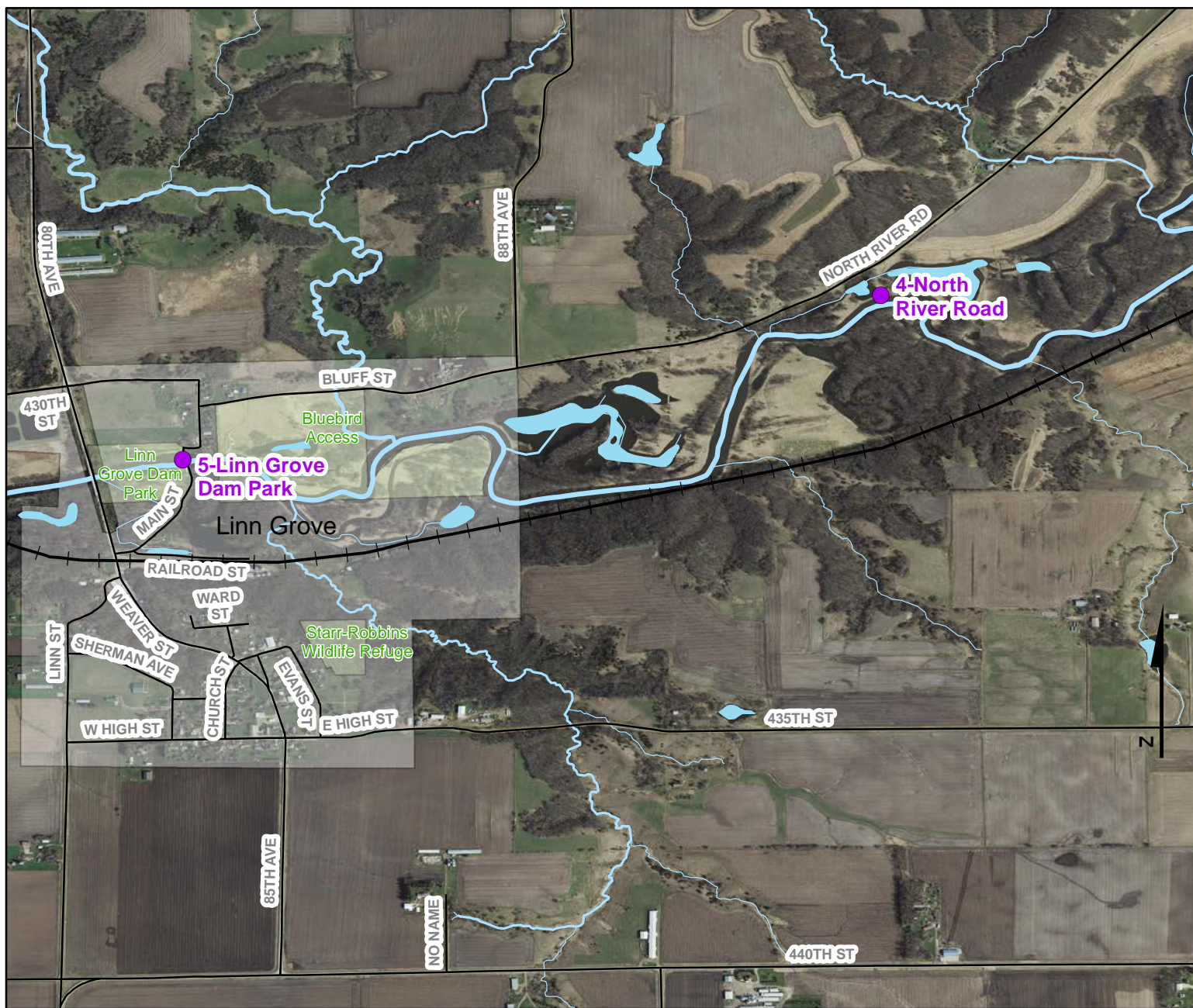


© OpenStreetMap (and contributors), CC-BY-SA

Volunteer Wildlife Monitoring Program (VWMP) Frog and Toad Survey

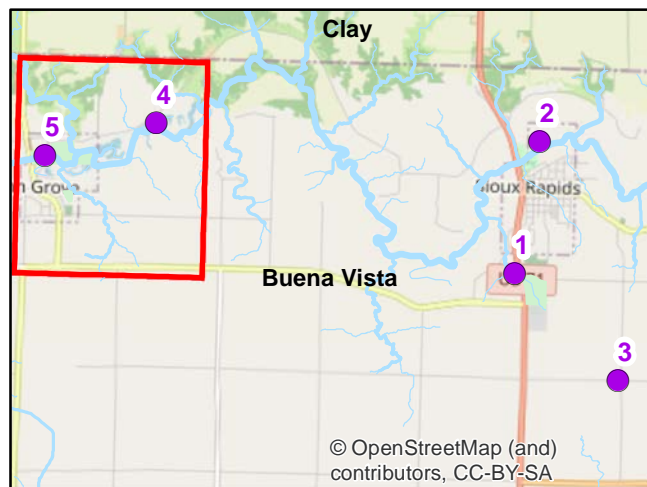


Route ID: 317 County: Buena Vista



Legend

- Trails
- Survey Stops



© OpenStreetMap (and contributors), CC-BY-SA



Frog and Toad Call Survey Route Description

Route ID **317**

Established: **2023**

Site Number	Name	County	Latitude	Longitude	Directions
1	Gabrielson Lake Runoff	Buena Vista	42.880587	-95.153186	Baines
2	Sioux Rapids City Park	Buena Vista	42.899532	-95.148901	Flooded timber and oxbow wetlands on north side of river. Listen from Park on south side of river.
3	Ludahl	Buena Vista	42.865681	-95.13264	1 mile east of Highway 10, Just Rd. North.
4	North River Road	Buena Vista	42.900739	-95.223573	Little Sioux River runs near the road.
5	Linn Grove Dam Park	Buena Vista	42.895701	-95.244976	Barnes, North edge of river by Linn Grove