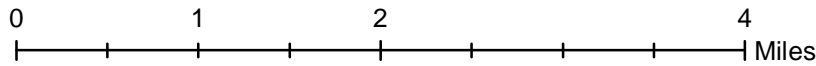
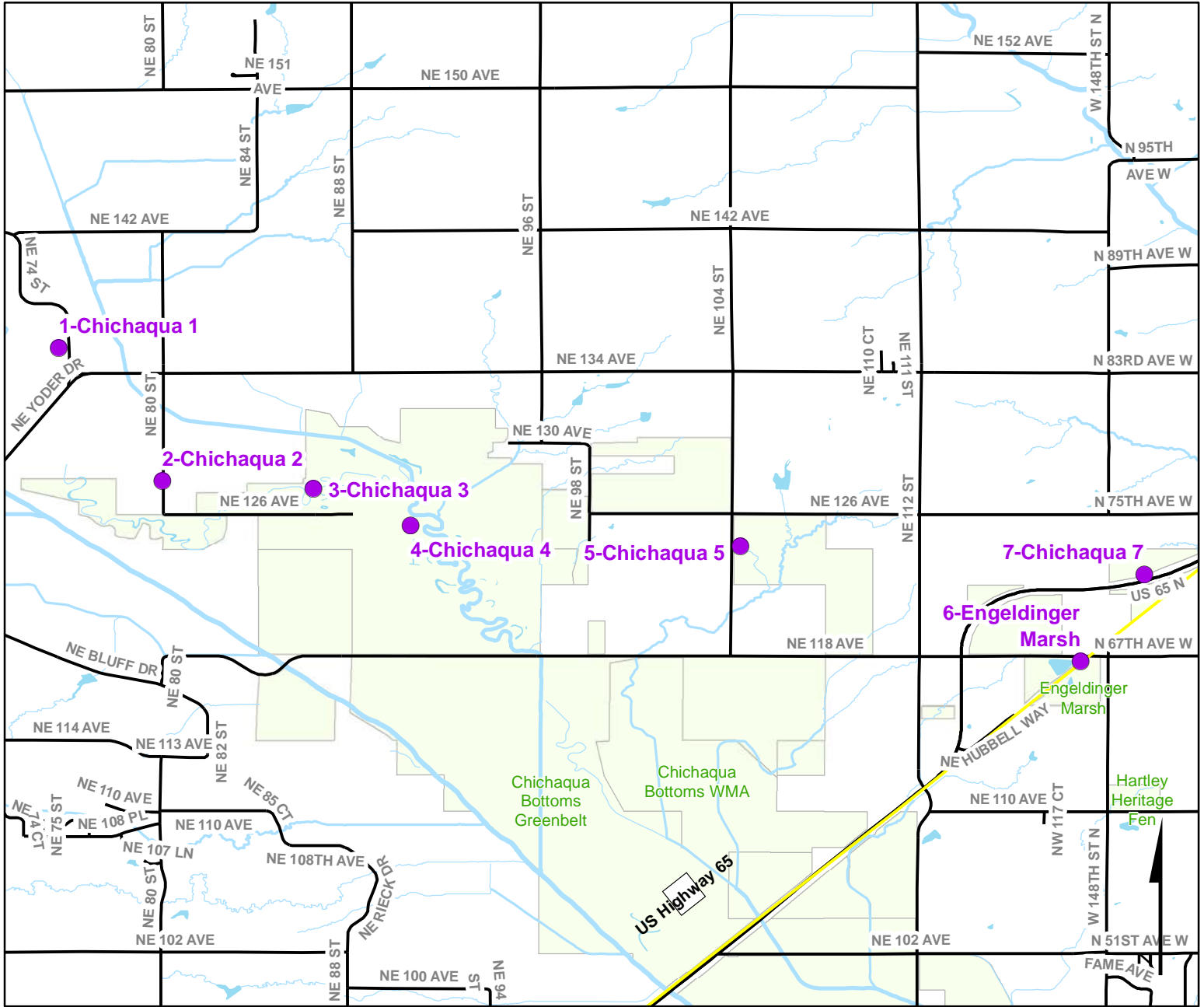


# Volunteer Wildlife Monitoring Program (VWMP) Frog and Toad Survey

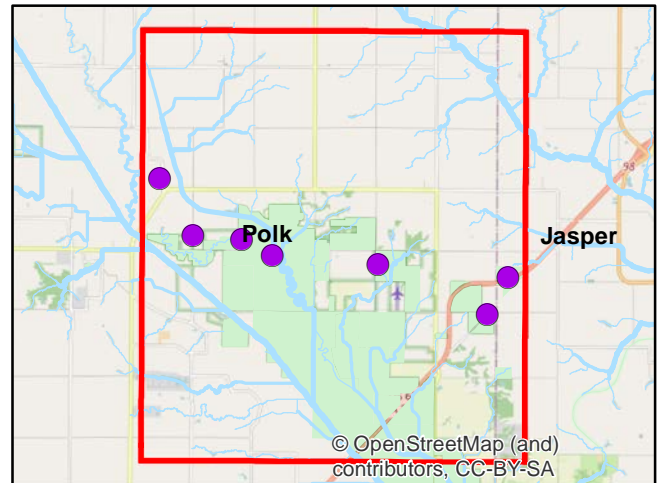


Route ID: 301 County: Polk



**DNR**  
Volunteer  
Wildlife  
Monitoring  
Program

## Legend

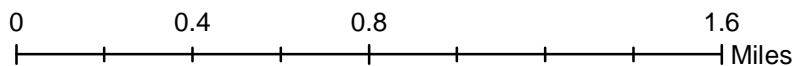
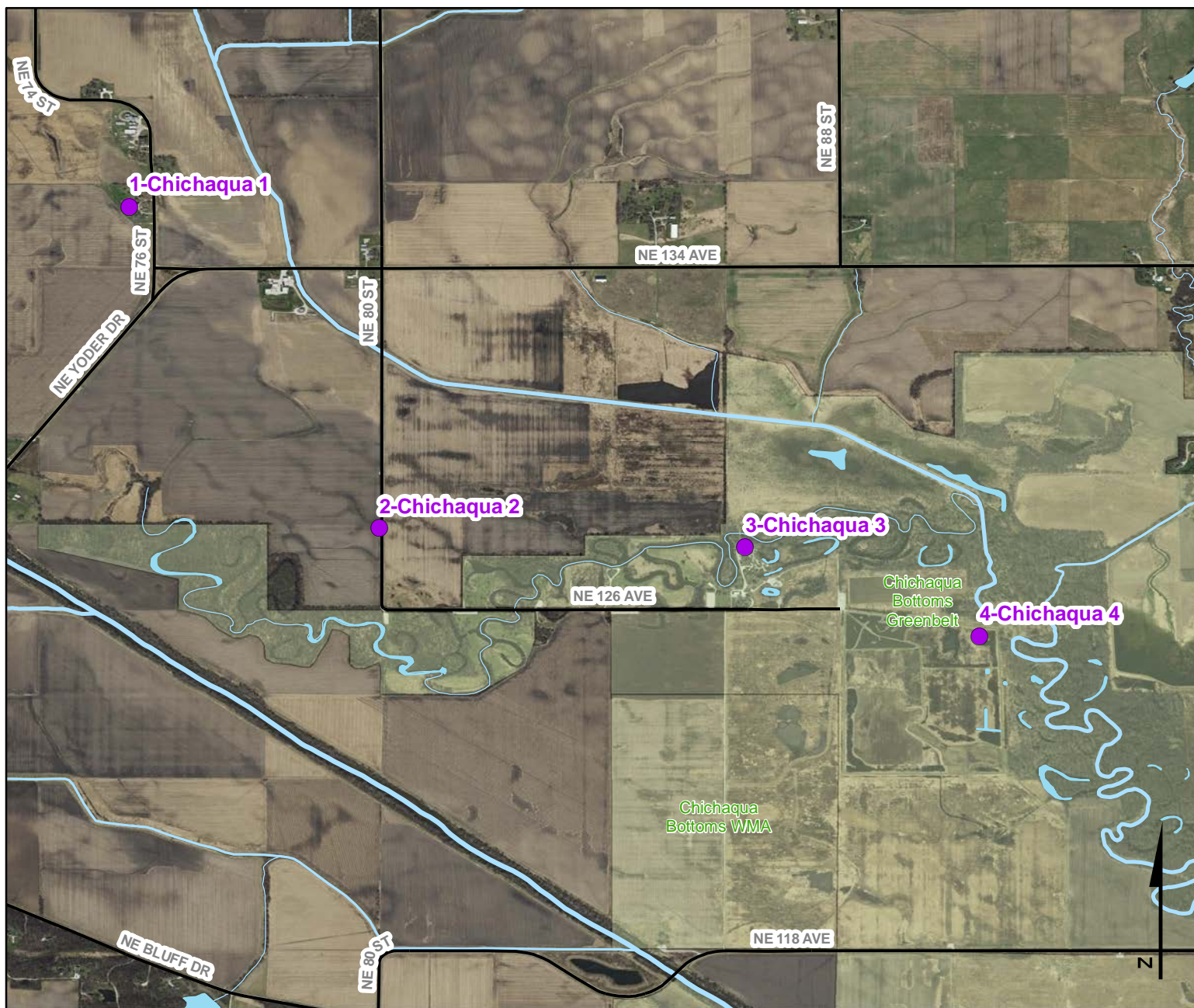


© OpenStreetMap (and) contributors, CC-BY-SA

# Volunteer Wildlife Monitoring Program (VWMP) Frog and Toad Survey



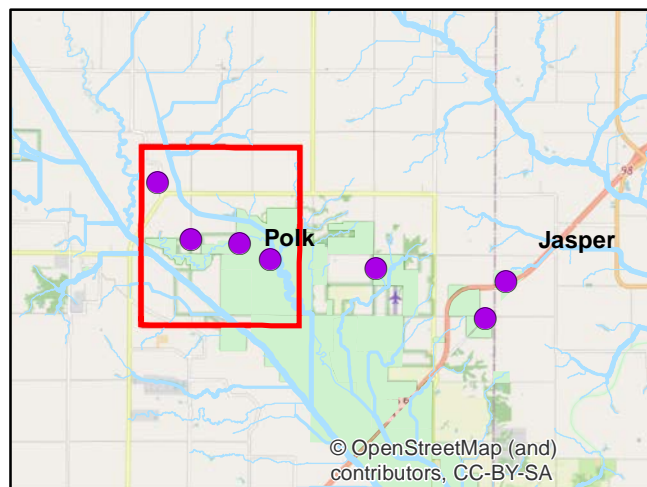
Route ID: 301 County: Polk



**DNR**  
Volunteer  
Wildlife  
Monitoring  
Program



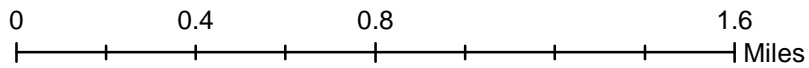
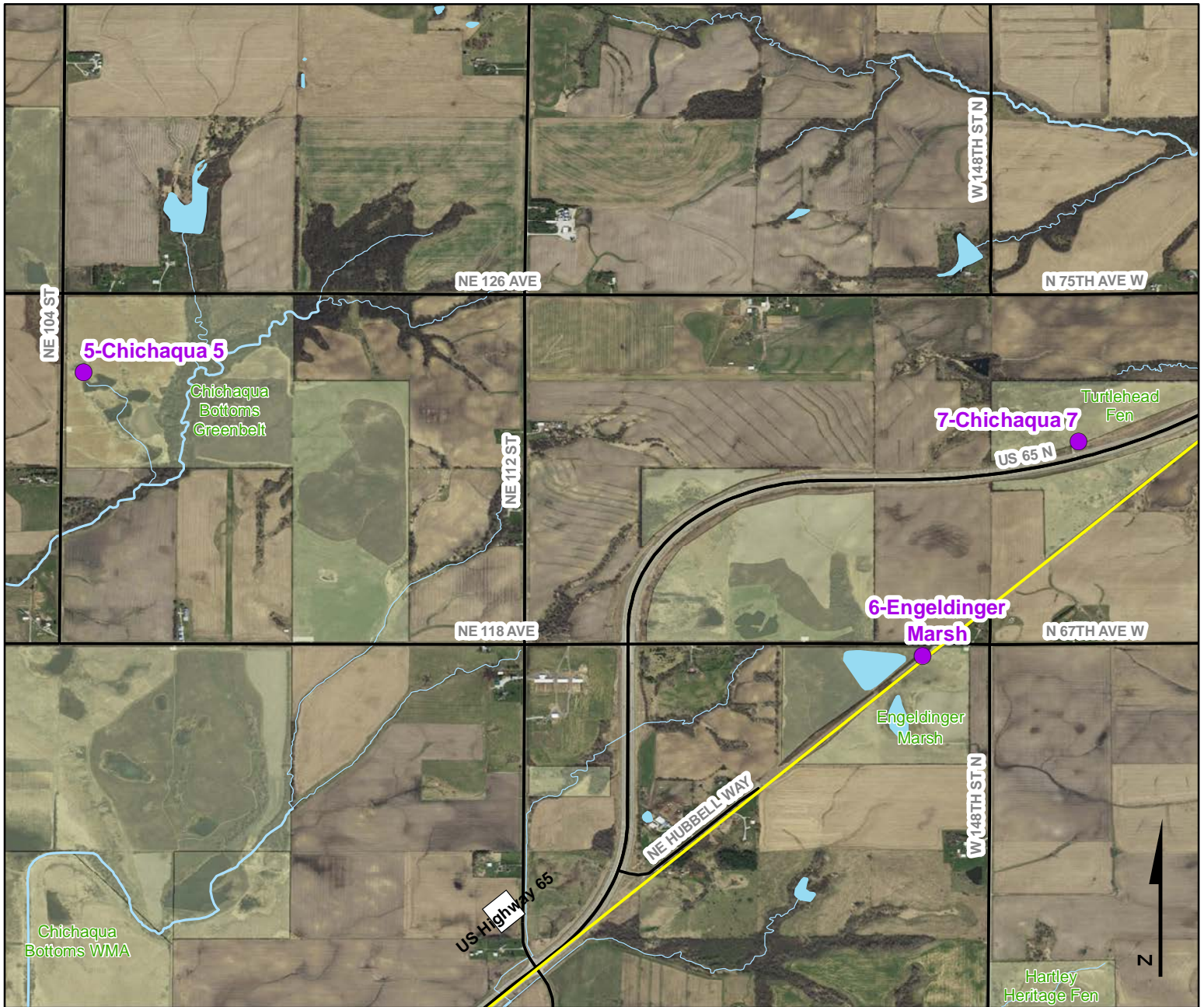
## Legend





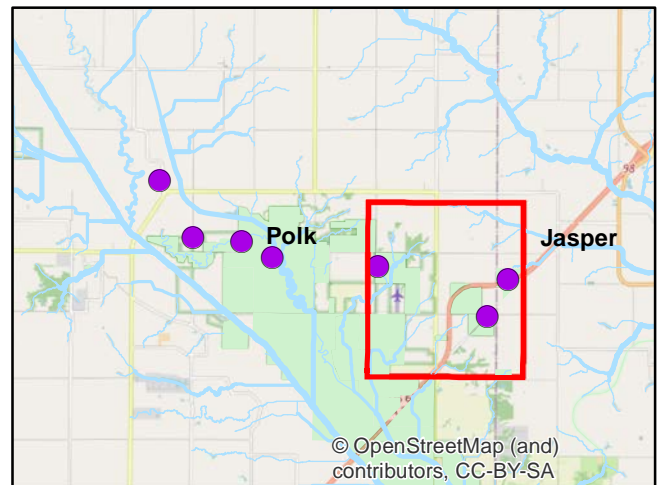
# Volunteer Wildlife Monitoring Program (VWMP) Frog and Toad Survey

Route ID: 301 County: Polk



**DNR**  
**Volunteer  
 Wildlife  
 Monitoring  
 Program**

## Legend



# VOLUNTEER WILDLIFE MONITORING PROGRAM

## Survey Route Description

**Route** 301

**Name** Stephanie Shepherd

**Address** 1436 255th St.  
Boone Wildlife Research Station

**Phone**

**E-mail** stephanie.shepherd@dnr.iowa.gov

Site No	Site Name	County	T	R	S	Q	Latitude	Longitude	Wetland Type
1	Chichaqua 1	Polk	81N	22W	19		41.8081500	-93.4553710	Hab Type Not recorded
2	Chichaqua 2	Polk	81N	22W	30		41.7945640	-93.4448070	Hab Type Not recorded
3	Chichaqua 3	Polk	81N	22W	29		41.7937680	-93.4293330	Hab Type Not recorded
4	Chichaqua 4	Polk	81N	22W	33		41.7900010	-93.4194250	Hab Type Not recorded
5	Chichaqua 5	Polk	81N	22W	35		41.7879110	-93.3857390	Hab Type Not recorded
6	Engeldinger Marsh	Polk	80N	22W	1		41.7761570	-93.3509540	Hab Type Not recorded
7	Chichaqua 7	Jasper	81N	21W	31		41.7850320	-93.3444650	Hab Type Not recorded