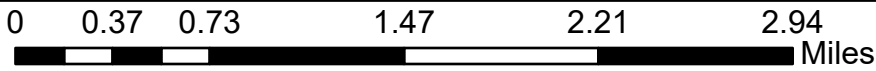
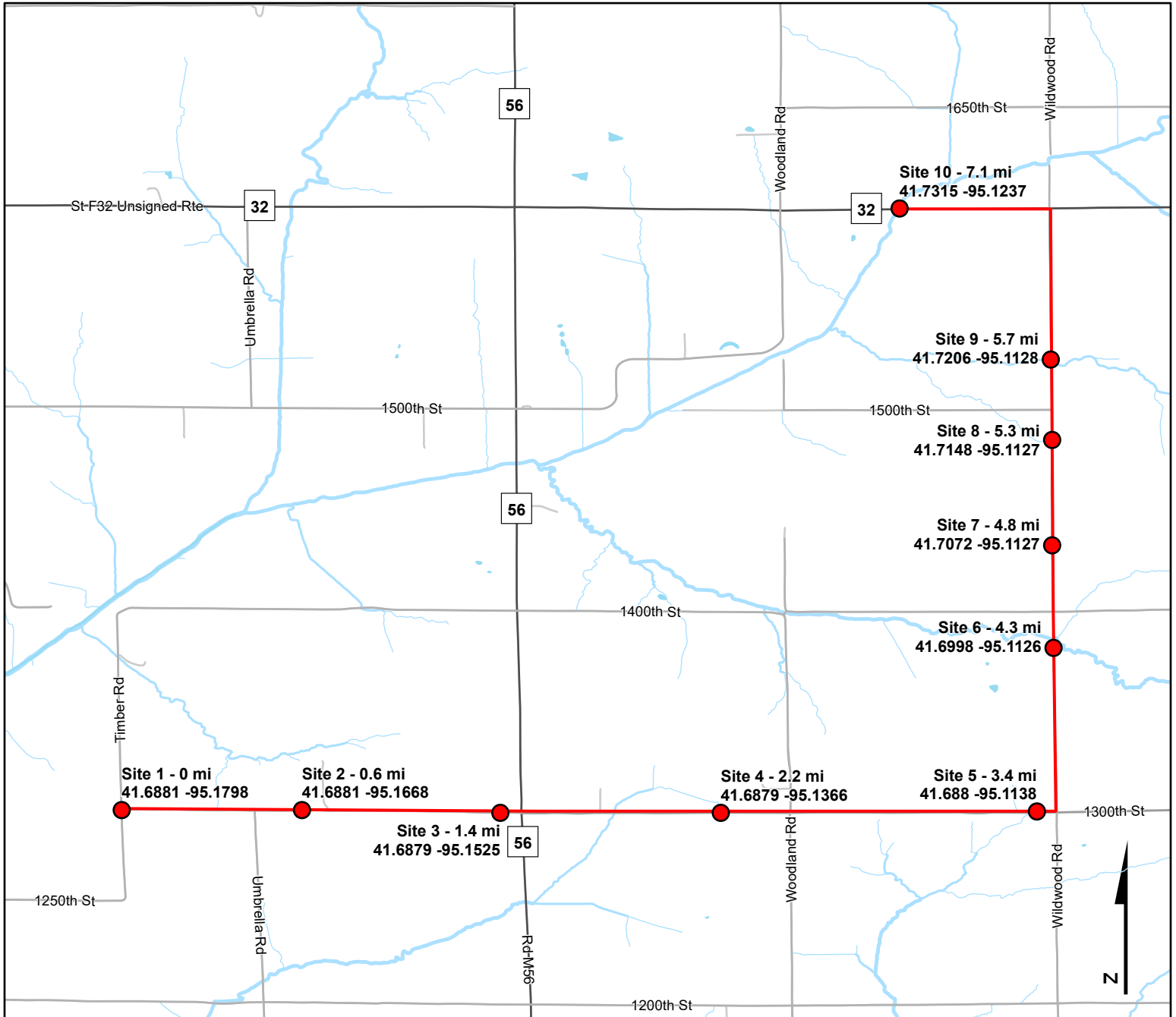




Volunteer Wildlife Monitoring Program (VWMP) Frog and Toad Survey

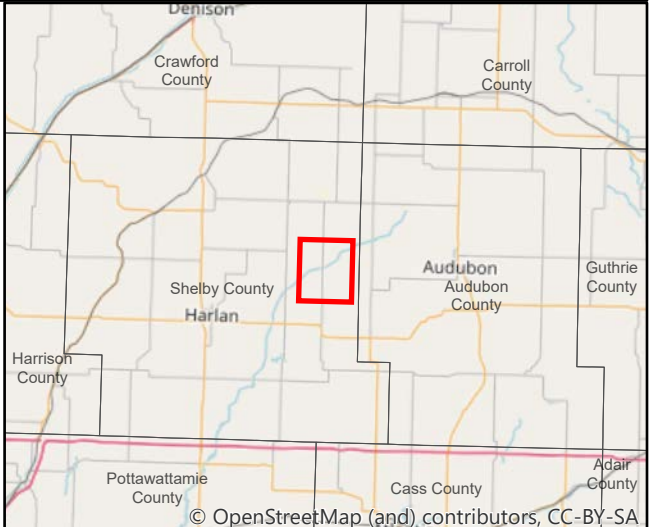
Inactive Route Map Route ID: 360415 County: Shelby



- Frog and Toad Survey Sites
- Frog and Toad Survey Route



Questions? Contact the VWMP Coordinator at vwmp@dnr.iowa.gov.
Created on: 4/4/2019



© OpenStreetMap (and) contributors, CC-BY-SA



Volunteer Wildlife Monitoring Program (VWMP) Frog and Toad Survey

Inactive Route Table Route ID: 360415 County: Shelby



SiteNum	Site_Name	Directions
1	0	At intersection of Timber and 1300th facing east. Site is on west side of Timber Ave.
2	0.6	Continue east past Umbrella. Stop at grassed waterway on left side of road.
3	1.4	Continue east on 1300th. Stop just before stop sign, small narrow creek running under road.
4	2.2	Continue east on 1300th. Stop at small narrow creek with some trees on left side of road.
5	3.4	Continue east on 1300th. Stop by marshy creek on right side of road by "stop ahead" sign. In horse pasture.
6	4.3	Turn north on Wildwood. Stop at narrow bridge just before intersection with 1400th.
7	4.8	Continue north on Wildwood. Small pond on right in hollow in pasture.
8	5.3	Continue north on wildwood. Small creek to the left brodered by trees at the bottom of the hill.
9	5.7	Continue north on Wildwood. 0.4 miles stop at the bottom of the hill, wood lined creek running under road through crop fields.
10	7.1	Turn left on F32. Stop at bridge.