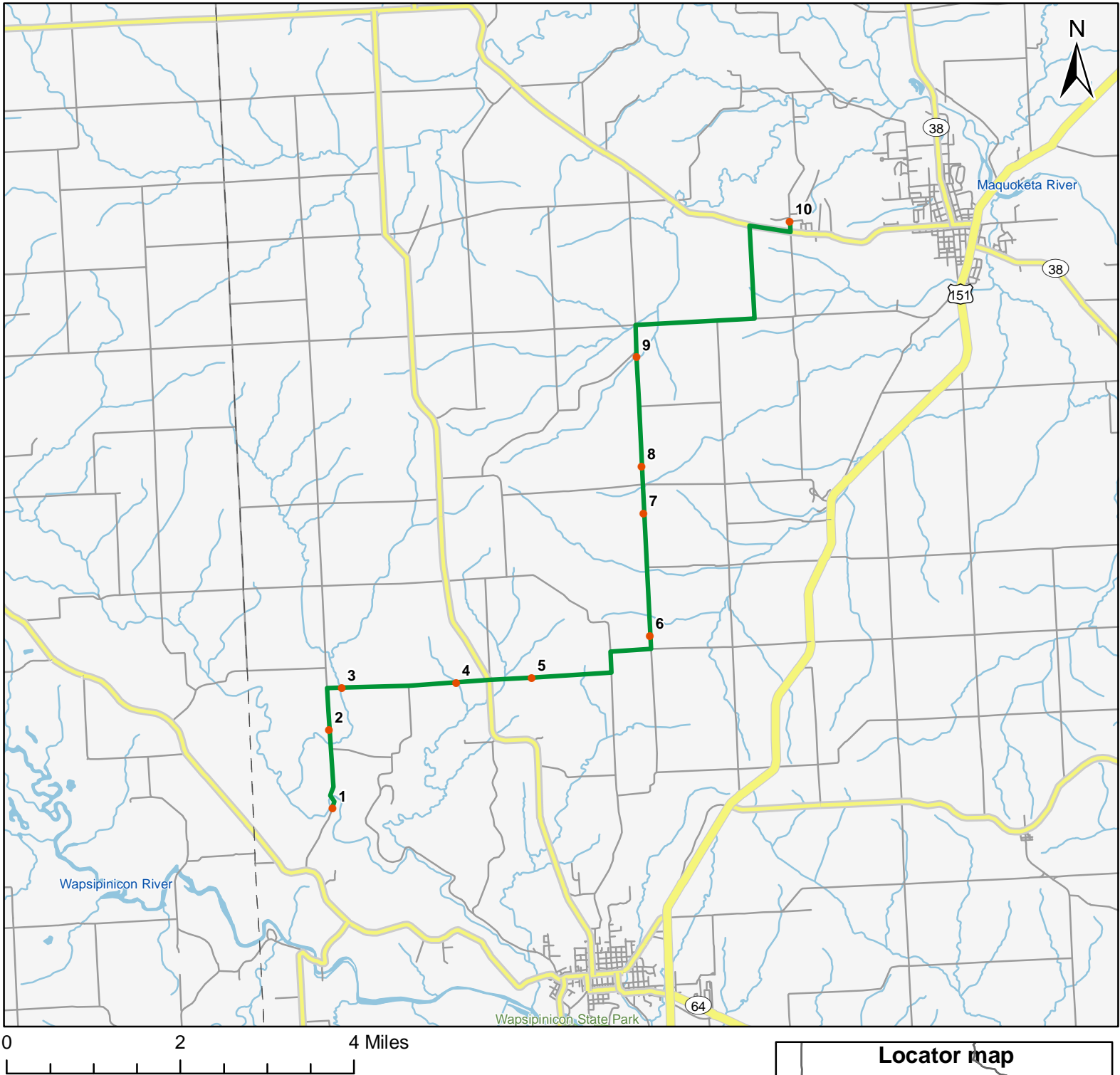


North American Amphibian Monitoring Program

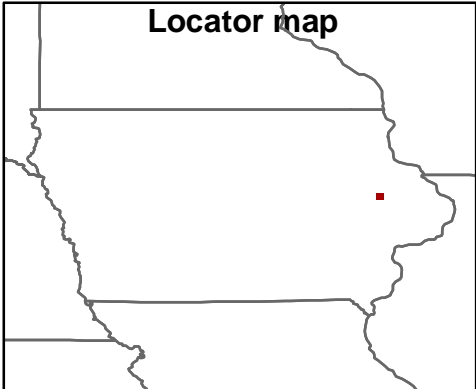


Route: 360312 Stone City, IA



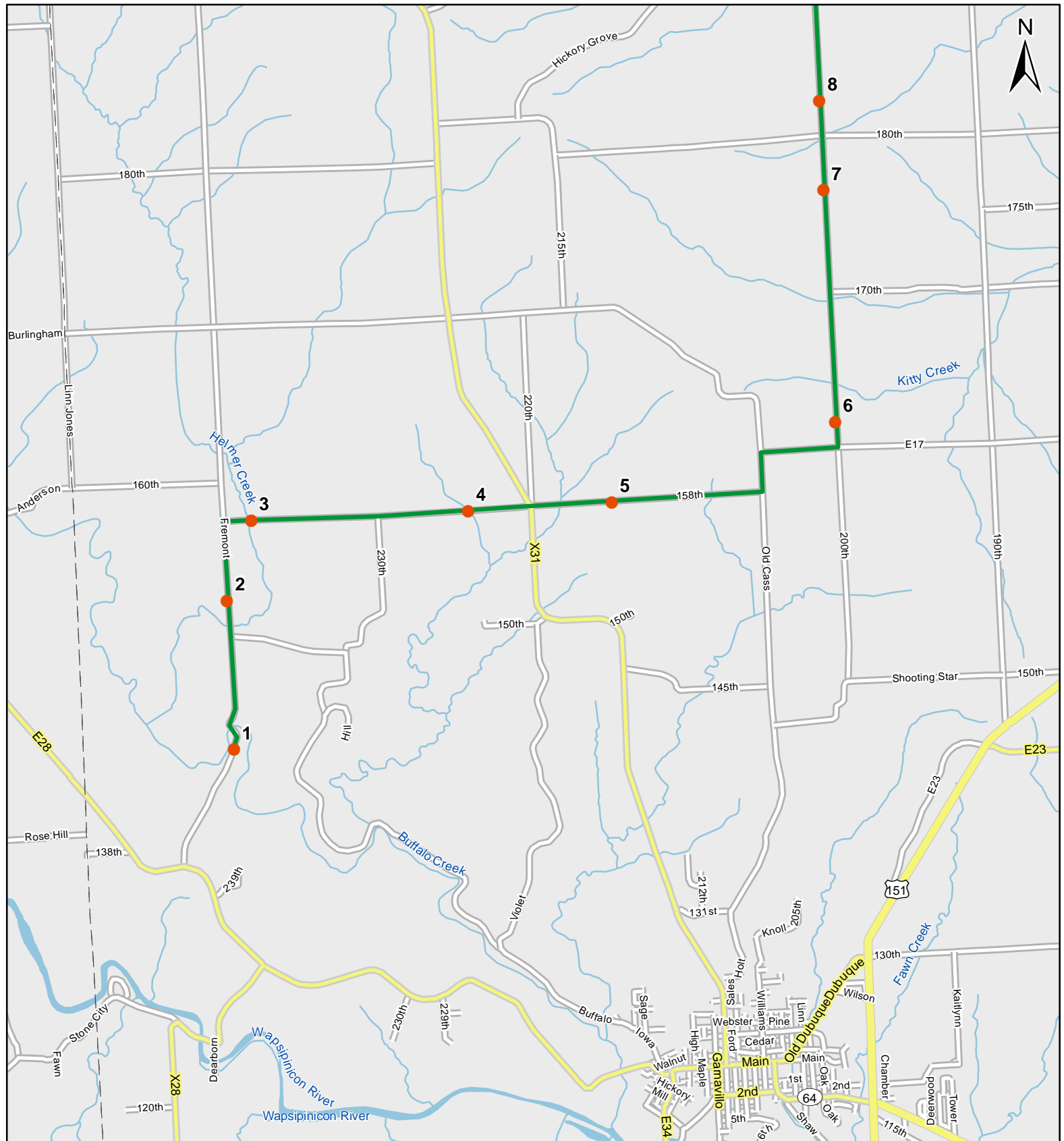
Legend

- Stop Locations
- Route Path



For more information, please visit the NAAMP website:
<http://www.pwrc.usgs.gov/naamp/>

Route: 360312 Stone City, IA

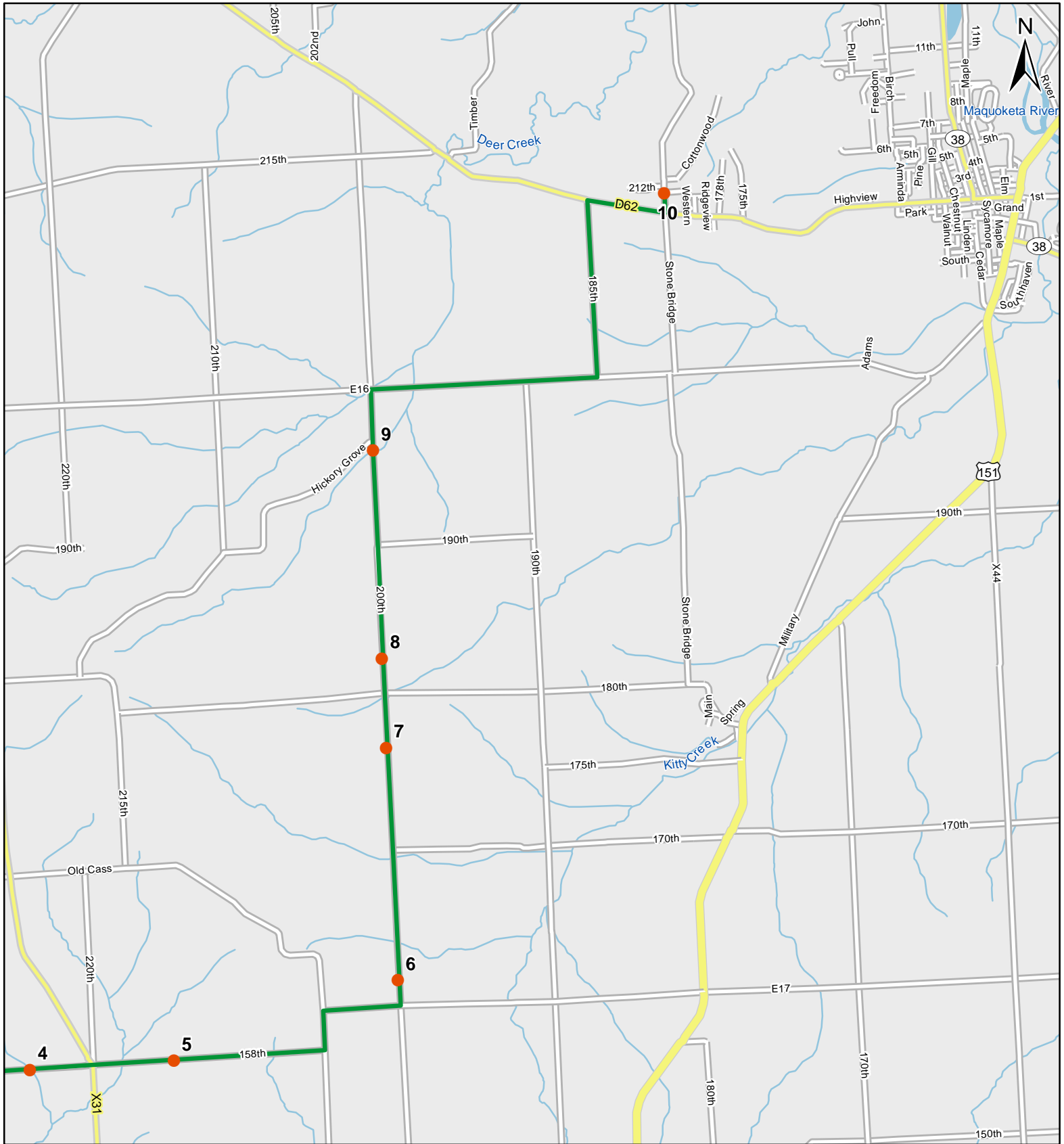


1:50,000

Legend

- Stop Locations
- Route Path

Route: 360312 Stone City, IA



0 1 Miles

1:50,000

Legend

- Stop Locations
- Route Path



Frog and Toad Call Survey Route Description

Route ID **360312**

Established:

Site Number	Name	County	Latitude	Longitude	Directions
1	0	Jones	42.1403008	-91.3454971	Fremont Rd. Between driveways -stop before #14384. Woodland gully with creek.
2	0.9	Jones	42.1543007	-91.3453979	Damp ditch and field
3	1.6	Jones	42.1617012	-91.3417969	riparian/woodland creek
4	3.1	Jones	42.161499	-91.3143997	culvert and creek
5	4	Jones	42.1615982	-91.2962036	Marshy ditch
6	5.9	Jones	42.1679993	-91.2675018	scrubby/marshy creek just after turn on 200th St.
7	7.4	Jones	42.1898003	-91.2674026	pond
8	8	Jones	42.1982002	-91.2673035	woodland ephemeral just north of 180th on 200th.
9	9.4	Jones	42.217701	-91.2669983	riparian creek just before Hickory Grove Rd.
10	13	Jones	42.2402992	-91.2285995	Pond just north of D62 on Stone Brdige Rd. - at intersection with rainbow drive.