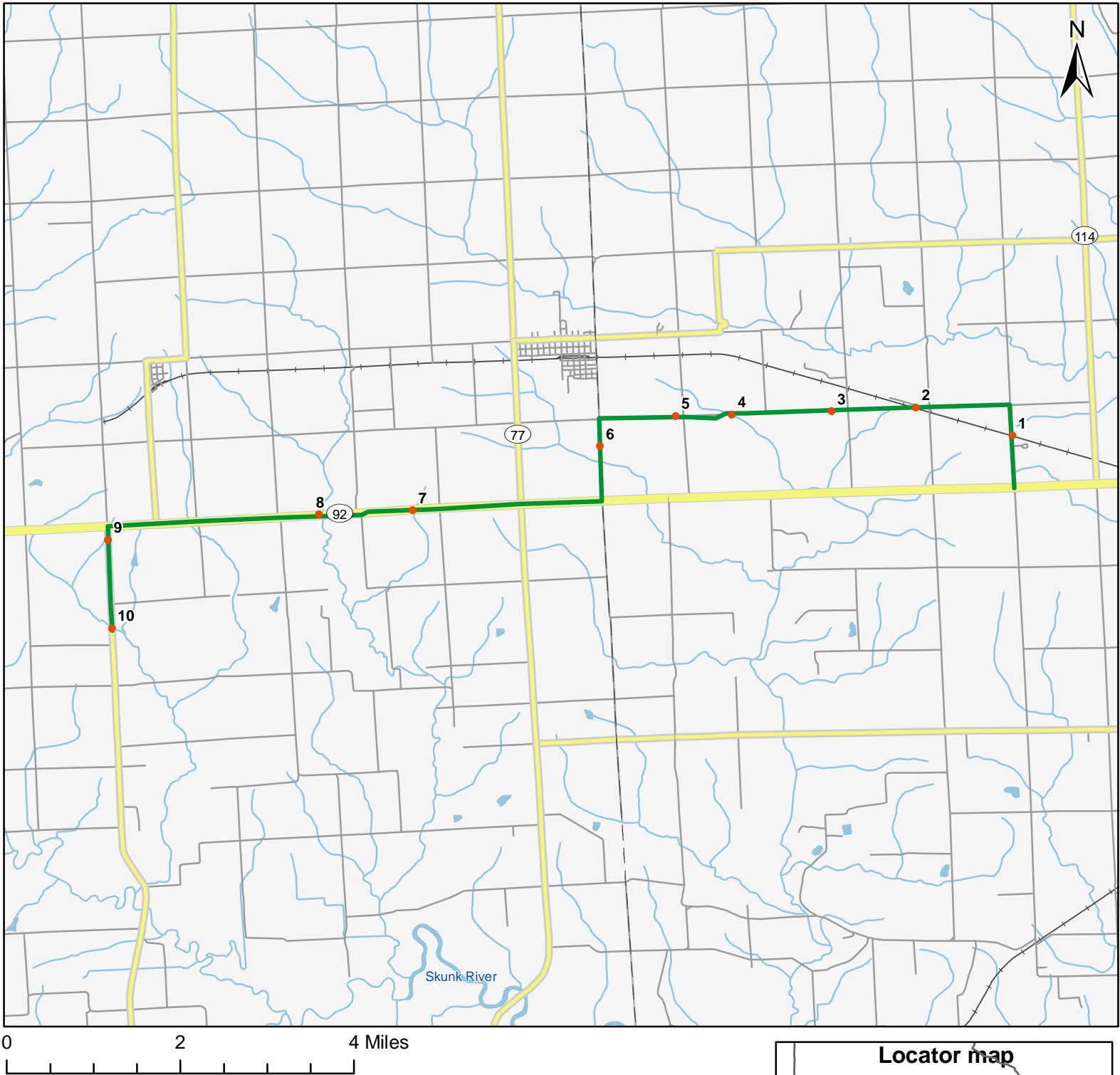


# North American Amphibian Monitoring Program



Route: 360319 West Chester, IA



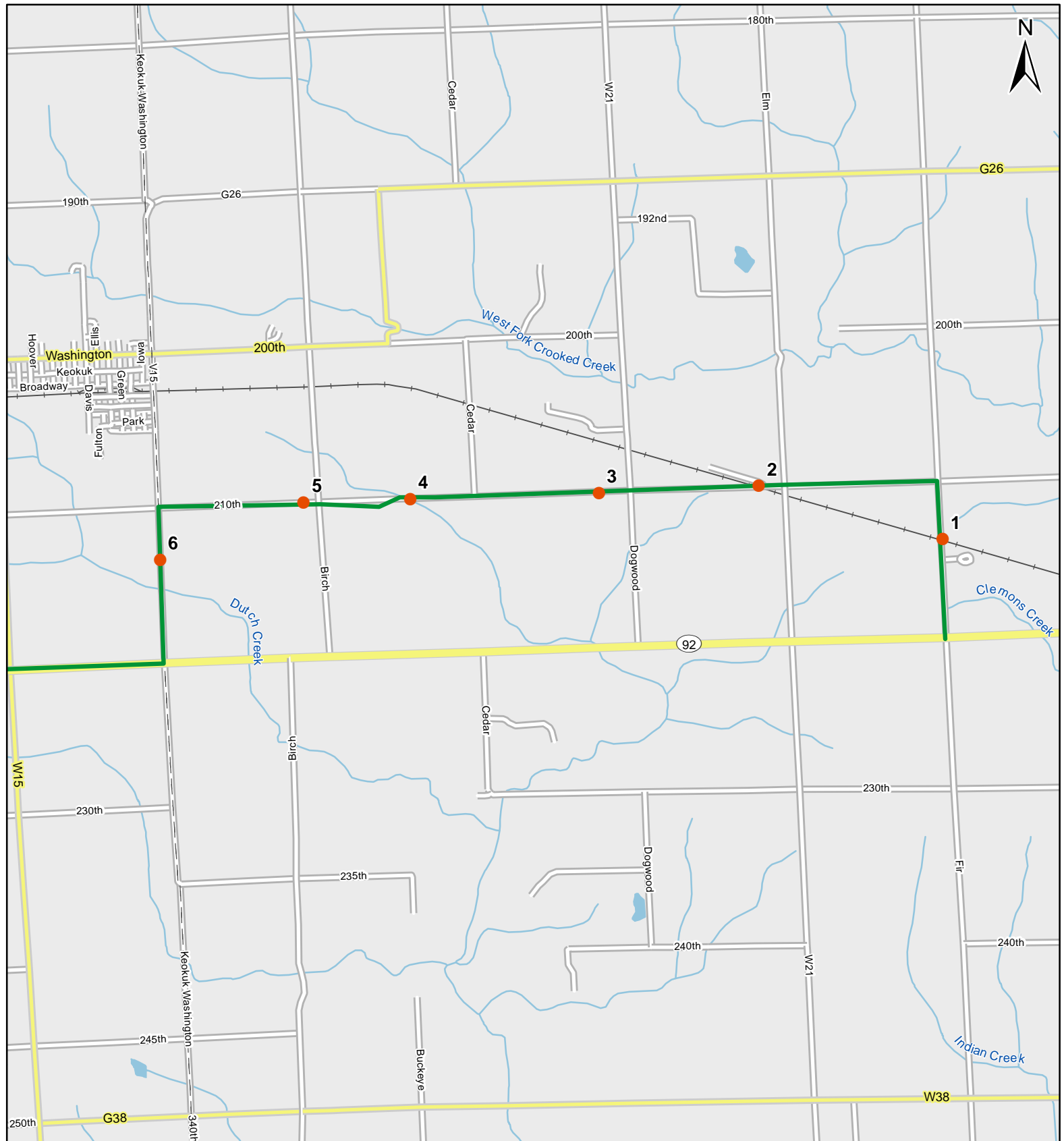
**Legend**

- Stop Locations
- Route Path



For more information, please visit the NAAMP website:  
<http://www.pwrc.usgs.gov/naamp/>

# Route: 360319 West Chester, IA

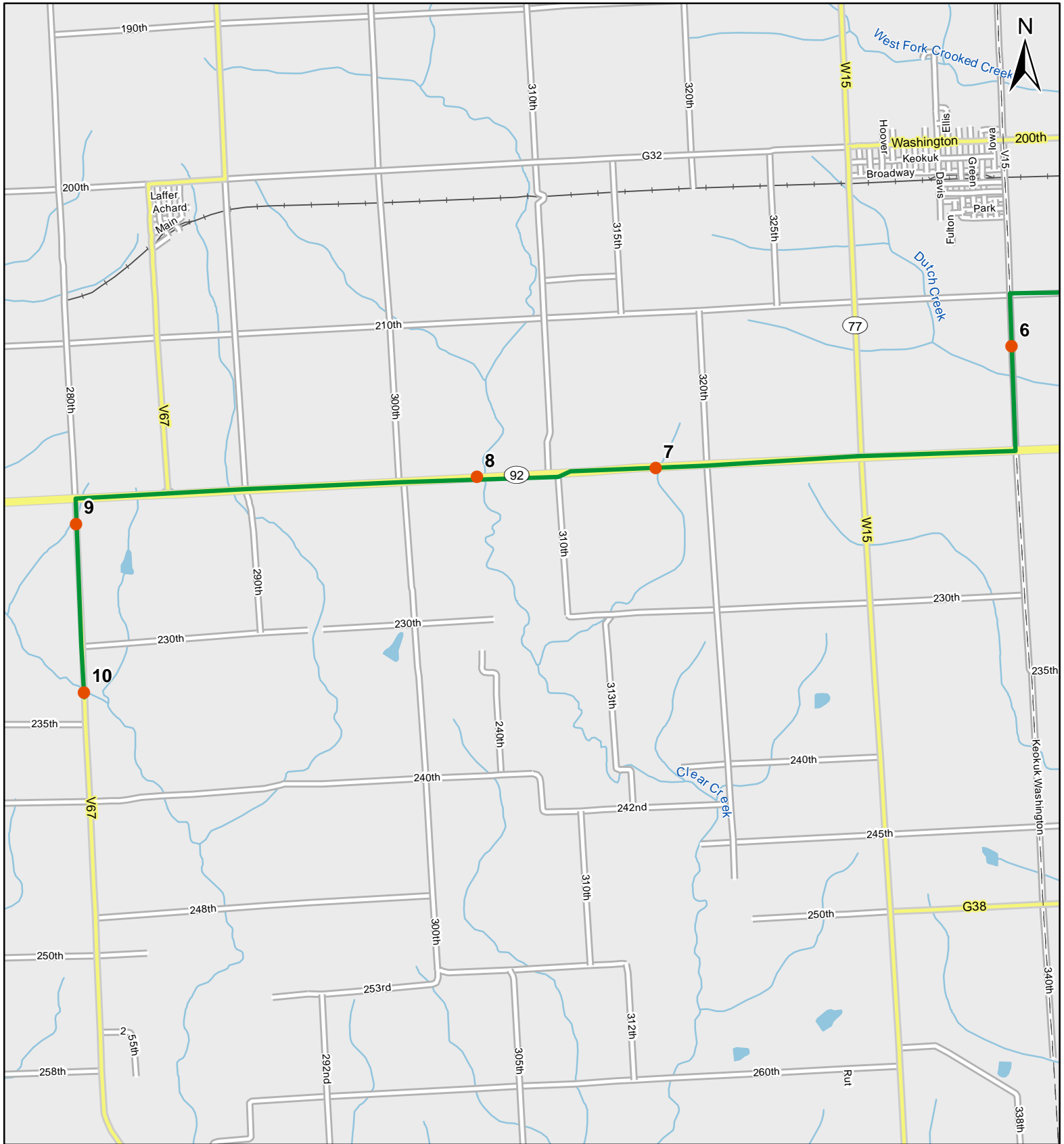


1:50,000

**Legend**

- Stop Locations
- Route Path

# Route: 360319 West Chester, IA



0 1 Miles

1:50,000

**Legend**

- Stop Locations
- Route Path



# Frog and Toad Call Survey Route Description

Route ID **360319**

Established:

Site Number	Name	County	Latitude	Longitude	Directions
1	0	Washington	41.3457985	-91.8492966	First stop point marked as being at "0 miles" but is not located at the route start point. Take Hwy 92 west of west chester to Fir ave. Route changed due to level B roads. From Hwy 92 go north on Fir ave. 0.6 miles, past the koch nitrogen company and sto
2	1.5	Washington	41.3516006	-91.8719025	Continue north on Fir, go left on 210th to the next intersection with the Kewash Trail.
3	2.5	Washington	41.3516006	-91.8918991	Continue on 210th 1.0 miles to a drainage through a cattle pasture. Just past Dogwood ave.
4	3.7	Washington	41.3518982	-91.9153976	Continue on 210th 1.2 miles to drainage just past hog shed on hill on the right (north).
5	4.3	Washington	41.3521004	-91.9287033	Continue on 210th 0.6 miles to small pond next to house on left. Water not visible from road.
6	5.7	Keokuk	41.3473015	-91.9468994	Continue on 210th, turn left on V15/Washington-Keoto County line Rd. Stop at drainage by Quarry.
7	8.5	Keokuk	41.3375015	-91.9917984	Keep going south, then turn right on hwy 92, to large wooded drainage.
8	9.5	Keokuk	41.3373985	-92.0140991	Continue west on hwy 92 to next bridge (stream).
9	12.2	Keokuk	41.3348007	-92.0641022	Stay west on hwy 92, turn left (south) on 280th/V67. Stop at pond on right just after you turn.



# Frog and Toad Call Survey Route Description

10

13.3

Keokuk

41.3190002

-92.0641022

Stop at next drainage, 1.1 miles south on 280th, by house # 23343.