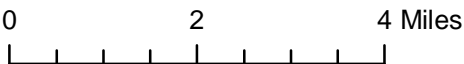
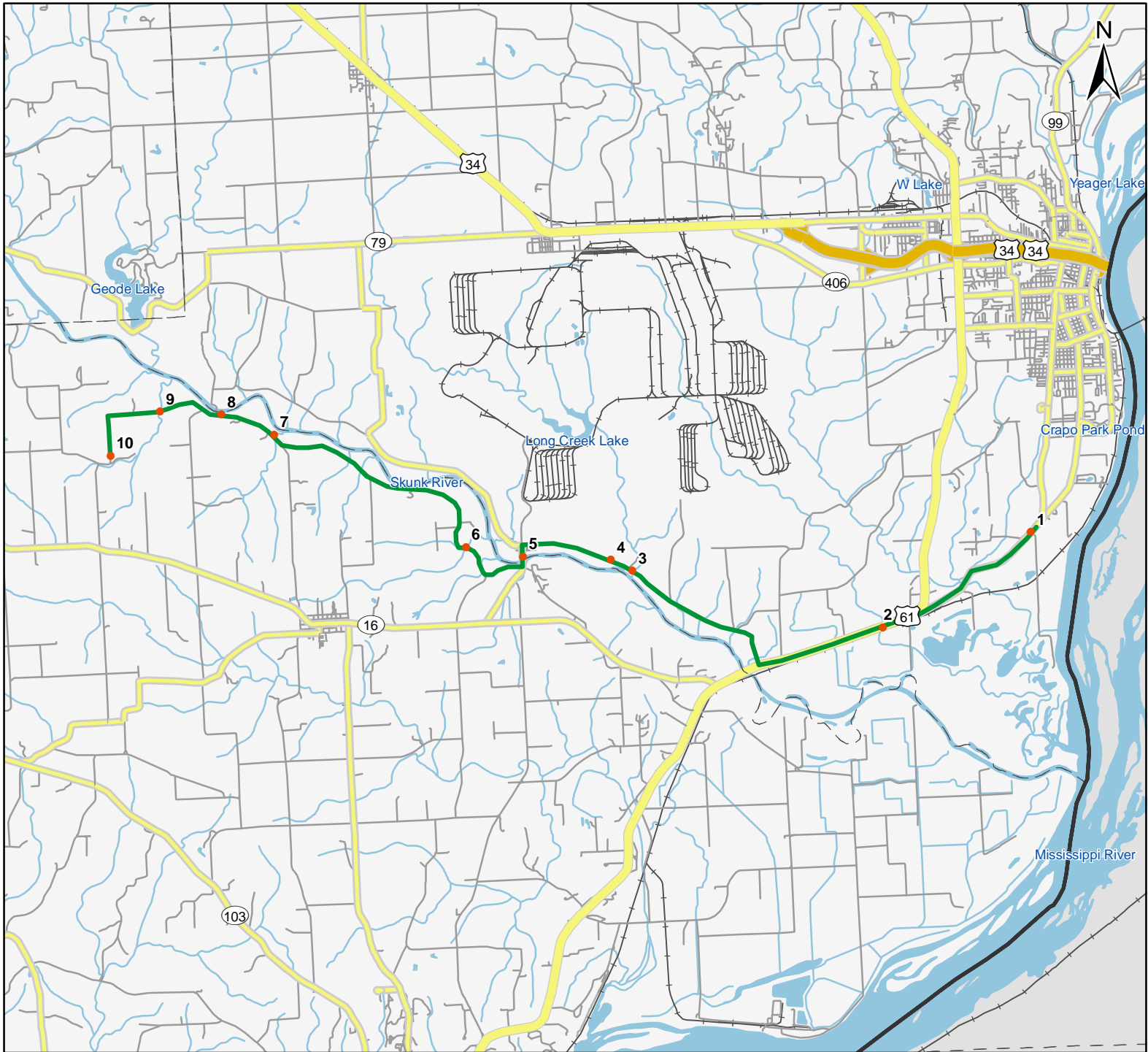


# North American Amphibian Monitoring Program



Route: 360225 Patterson, IA



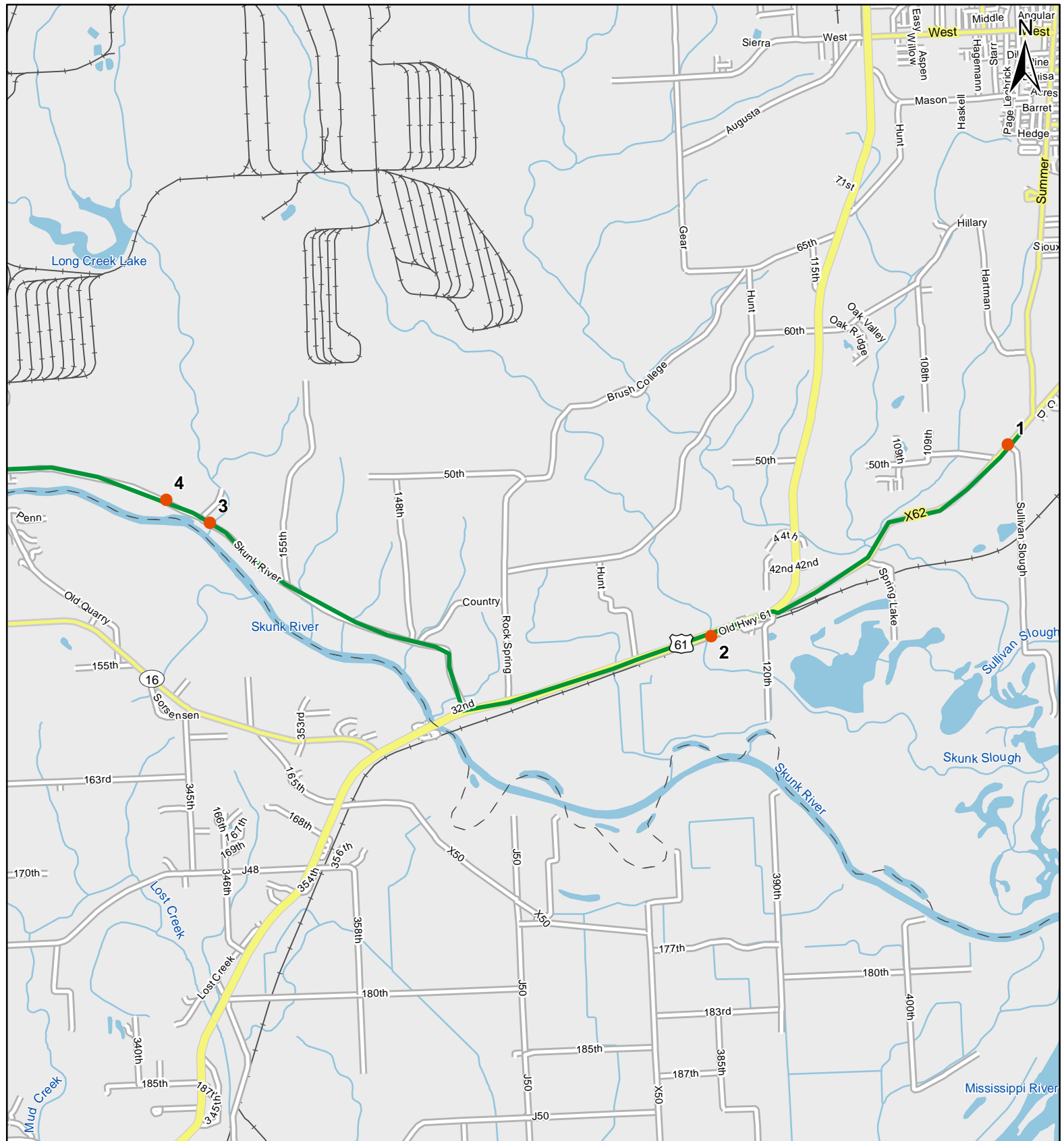
**Legend**

- Stop Locations
- Route Path

For more information, please visit the NAAMP website:  
<http://www.pwrc.usgs.gov/naamp/>



# Route: 360225 Patterson, IA



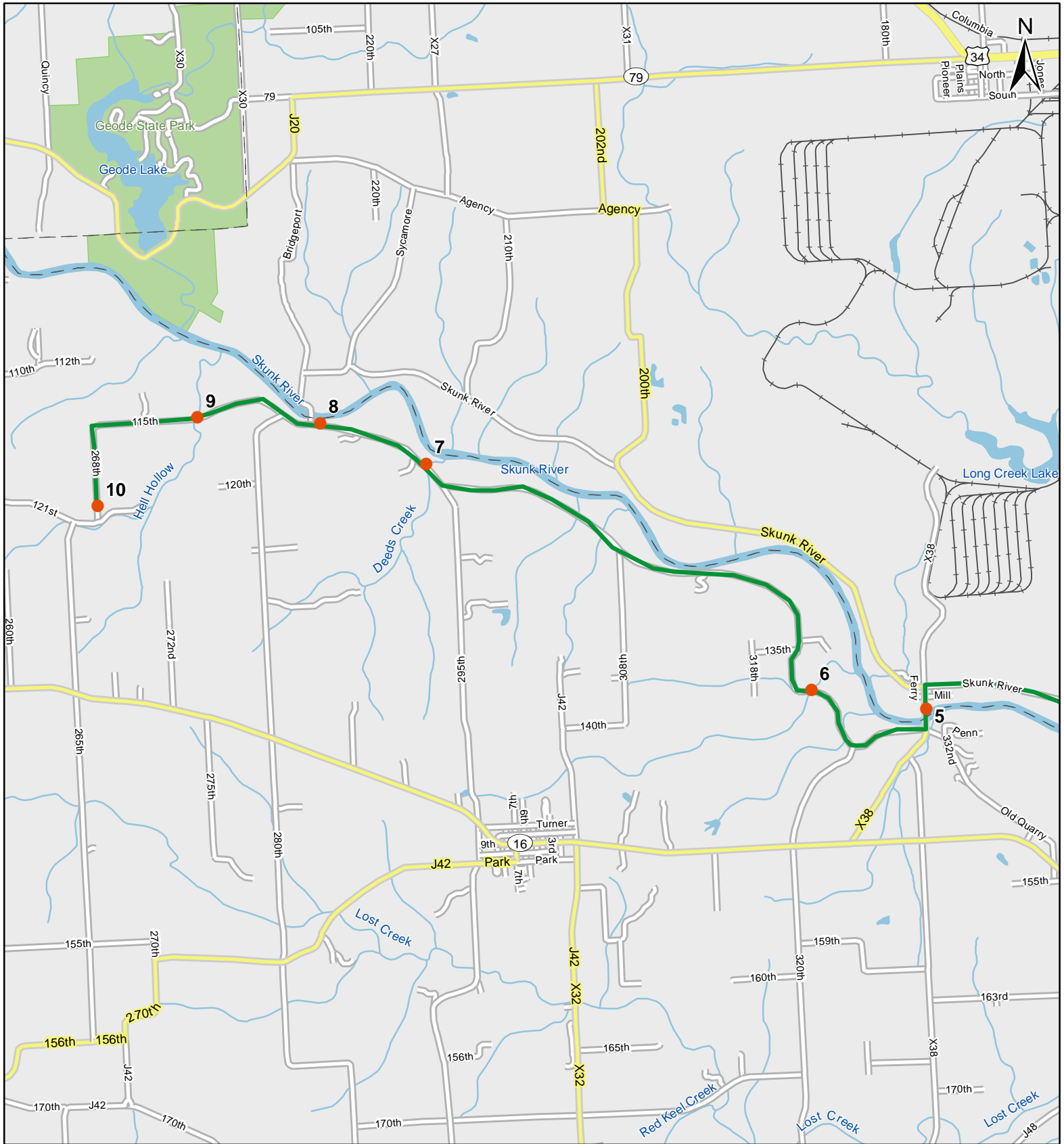
0 1 Miles

1:60,000

**Legend**

- Stop Locations
- Route Path

# Route: 360225 Patterson, IA



0 1 Miles

1:60,000

**Legend**

- Stop Locations
- Route Path



# Frog and Toad Call Survey Route Description

Route ID **360225**

Established:

Site Number	Name	County	Latitude	Longitude	Directions
1	0	Des Moines	40.7536011	-91.1246033	First stop is marked as being at "0 miles" but it is not located at the start point on the route. From start turn left onto old hwy 61. Stop at pond on right at intersection of old hwy 61 and sullivan slough road.
2	2.8	Des Moines	40.7338982	-91.1700974	Stay on old hwy 61/Summer st. 2.8 miles to bridge over small creek. Parallel to railroad tracks.
3	7.5	Des Moines	40.7498016	-91.2433014	Continue on old hwy 61, then get on hwy 61 south. Go right on skunk river road to the bridge by house # 16129.
4	7.8	Des Moines	40.7526016	-91.2496033	Continue on Skunk River Road 0.3 miles to the small pond on the left.
5	9.4	Des Moines	40.7543983	-91.2755966	Continue on route, turn left on X38 and stop at bridge over Skunk River.
6	10.7	Lee	40.7570992	-91.2923965	Continue on X38 across the bridge. Turn right on Old Quarry Rd. Go around s-curves and stop at small creek cutting into limestone bed.
7	14.6	Lee	40.7849007	-91.3475037	Continue on old Quarry rd. Past junction with 295th st. Stop at culvert at bottom of hill just past junction.
8	15.4	Lee	40.7901001	-91.3628998	Stay on old Quarry to Gray's Landing sign
9	17.3	Lee	40.7915001	-91.3809967	Old Quarry rd turns into 115th, at 250th st. Stop at next bridge on 115th.
10	18.7	Lee	40.7821007	-91.3964005	115th merges with 168th. Stop at low spot in road.