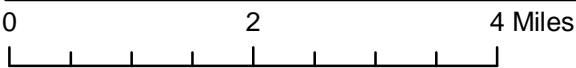
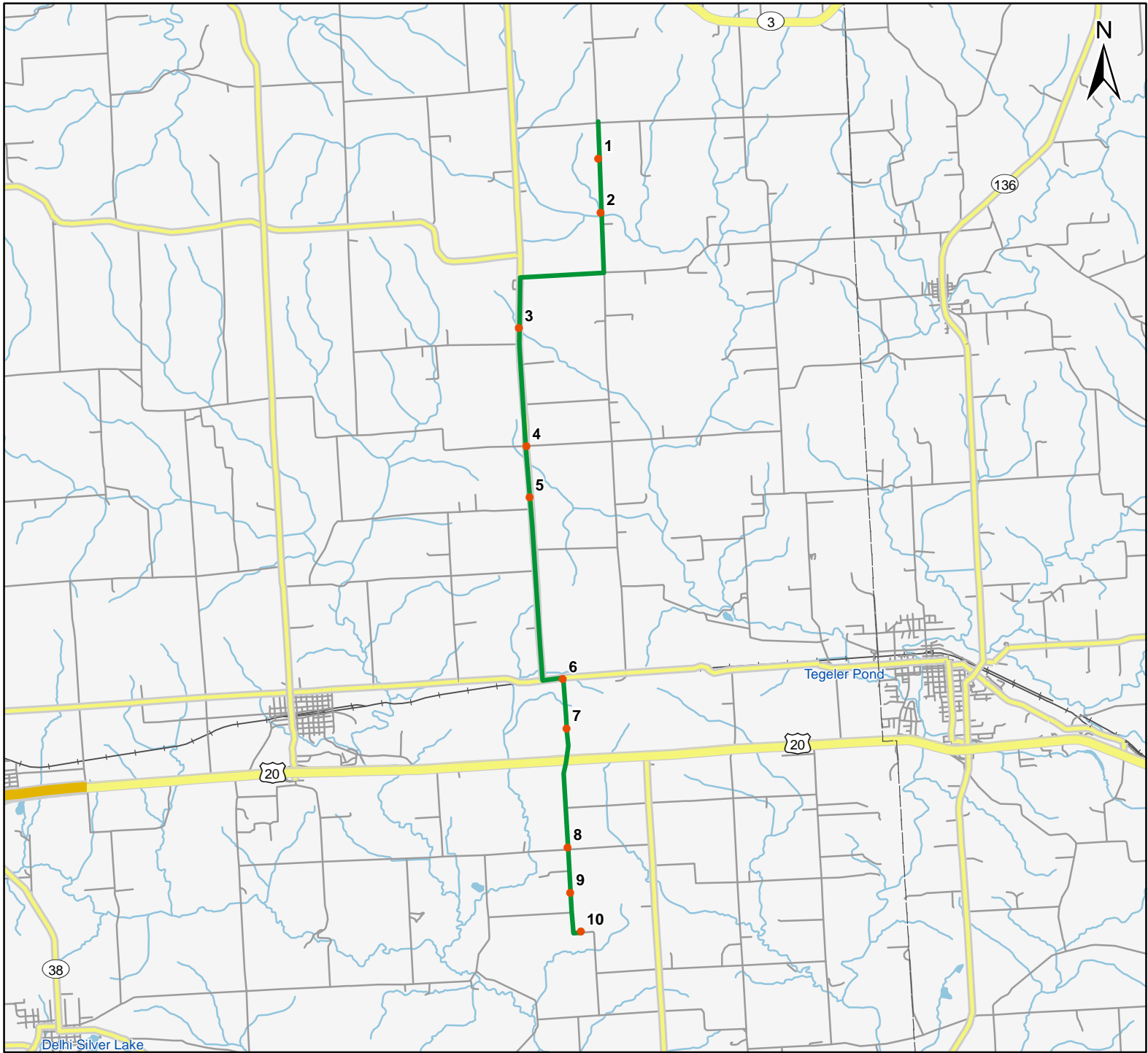


North American Amphibian Monitoring Program

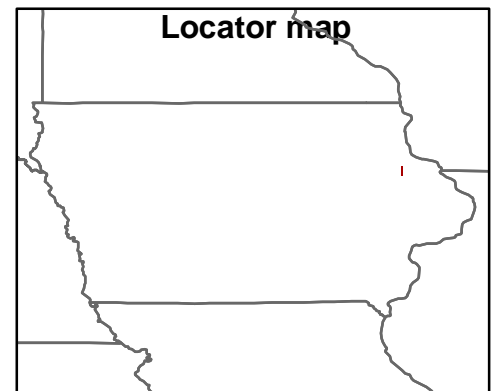


Route: 360212 Petersburg, IA



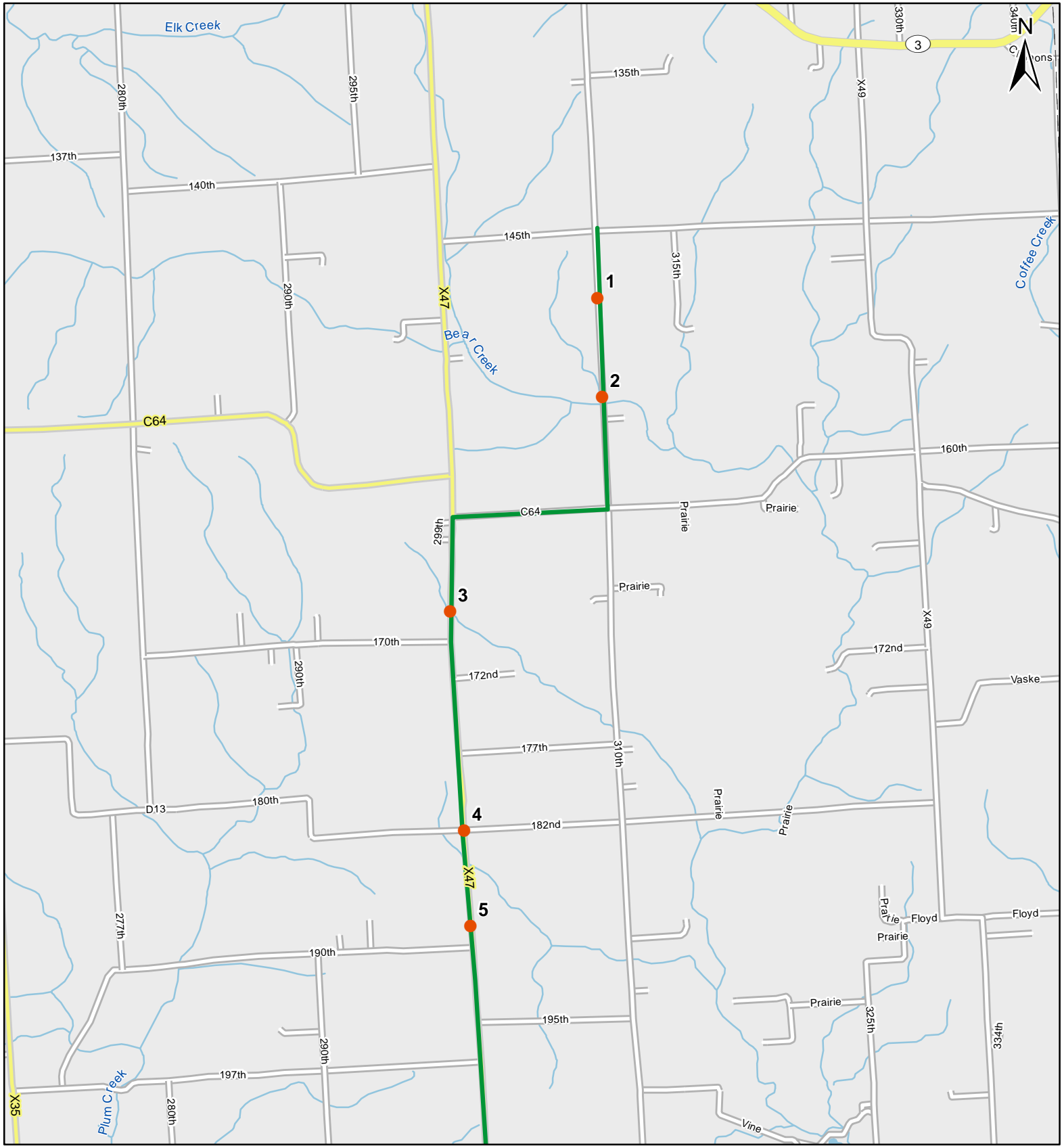
Legend

- Stop Locations
- Route Path



For more information, please visit the NAAMP website:
<http://www.pwrc.usgs.gov/naamp/>

Route: 360212 Petersburg, IA



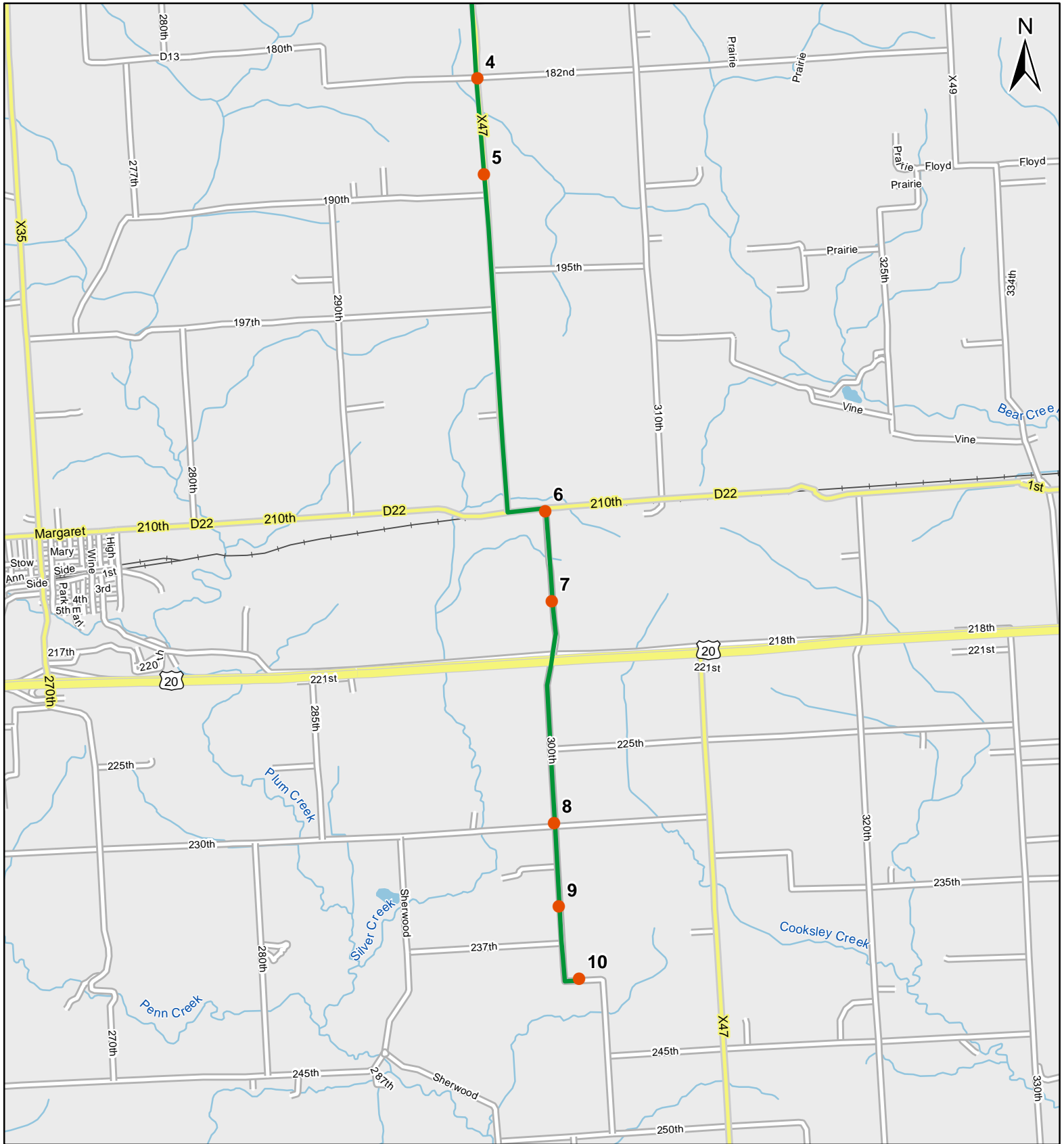
0 1 Miles

1:50,000

Legend

- Stop Locations
- Route Path

Route: 360212 Petersburg, IA



0 1 Miles

1:50,000

Legend

- Stop Locations
- Route Path



Frog and Toad Call Survey Route Description

Route ID **360212**

Established:

Site Number	Name	County	Latitude	Longitude	Directions
1	0.4	Delaware	42.5747986	-91.1932983	Start of route was moved 1 mile east because of a bridge out on X47. NEw start point is at 310th abd 145th. Drive South from start on 310th ~0.4 miles. Ditch on right side of road with a thick stand of cattails. Power line crosses the road twice just ahe
2	1	Delaware	42.5656013	-91.1933975	Drive south on 310th. At ~1.0 miles stop at small bridge over creek. Creek is bordered by crop fields with little buffer
3	3.3	Delaware	42.546299	-91.2141037	Drive south. At stop sign turn right onto 160th. At stop sign in town of Petersburg turn left onto 300th (X47) ~ 0.5 miles and stop at creek running under road. No pull off.
4	4.7	Delaware	42.5256996	-91.2138977	Drive south on X47. Stop at intersection with 182nd . Cattails in ditch on Northeast corner of intersection.
5	5.3	Delaware	42.5167007	-91.2137985	Drive south on X47. Stop by long area of ditch on right side with cattails. Houses on either side of road.
6	7.2	Delaware	42.4849014	-91.2082977	Drive south on X47 and follow jog to the left. After turning south again cross railroad tracks and stop. Small marshy area in right of way and ritche on left side of road.
7	8.4	Delaware	42.4763985	-91.2080994	Drive south. Just before you get to highway 20 is a wide grassed waterway through a crop field on the right. Mowed in November. Also ditches with cattails just beyond this spot.



Frog and Toad Call Survey Route Description

8	9.9	Delaware	42.4556999	-91.2093964	Drive South. Cross over Hwy 20. Stop at intersection with 230th. Small creek in ditch and their crossing under 230th to the west of the intersection. Northwest corner. Creek is tree-lined south of the road.
9	10.4	Delaware	42.4478989	-91.2093964	Drive south 0.5 miles. Stop at small shallow creek crossing under road. Tree-lined/old field on left, grassy through crop field on right.
10	11	Delaware	42.4410019	-91.2072983	Drive south and follow curve to left. Before curving south again is a small shallow stream which crosses under road. Heavily grown over with reed canary grass. Small trees on right side of road.