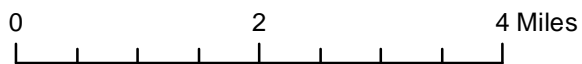
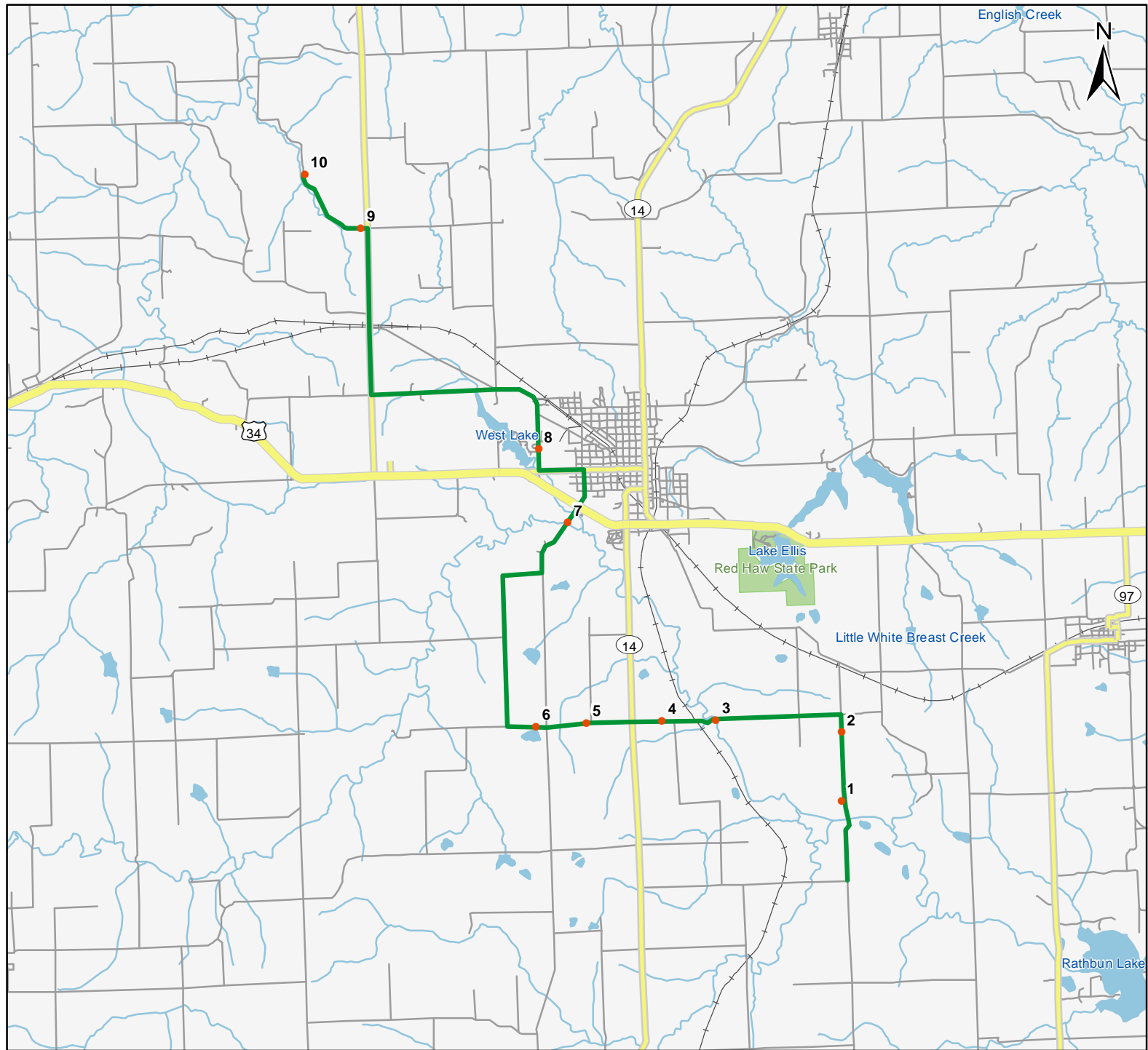


North American Amphibian Monitoring Program



Route: 360123 Chariton, IA



Legend

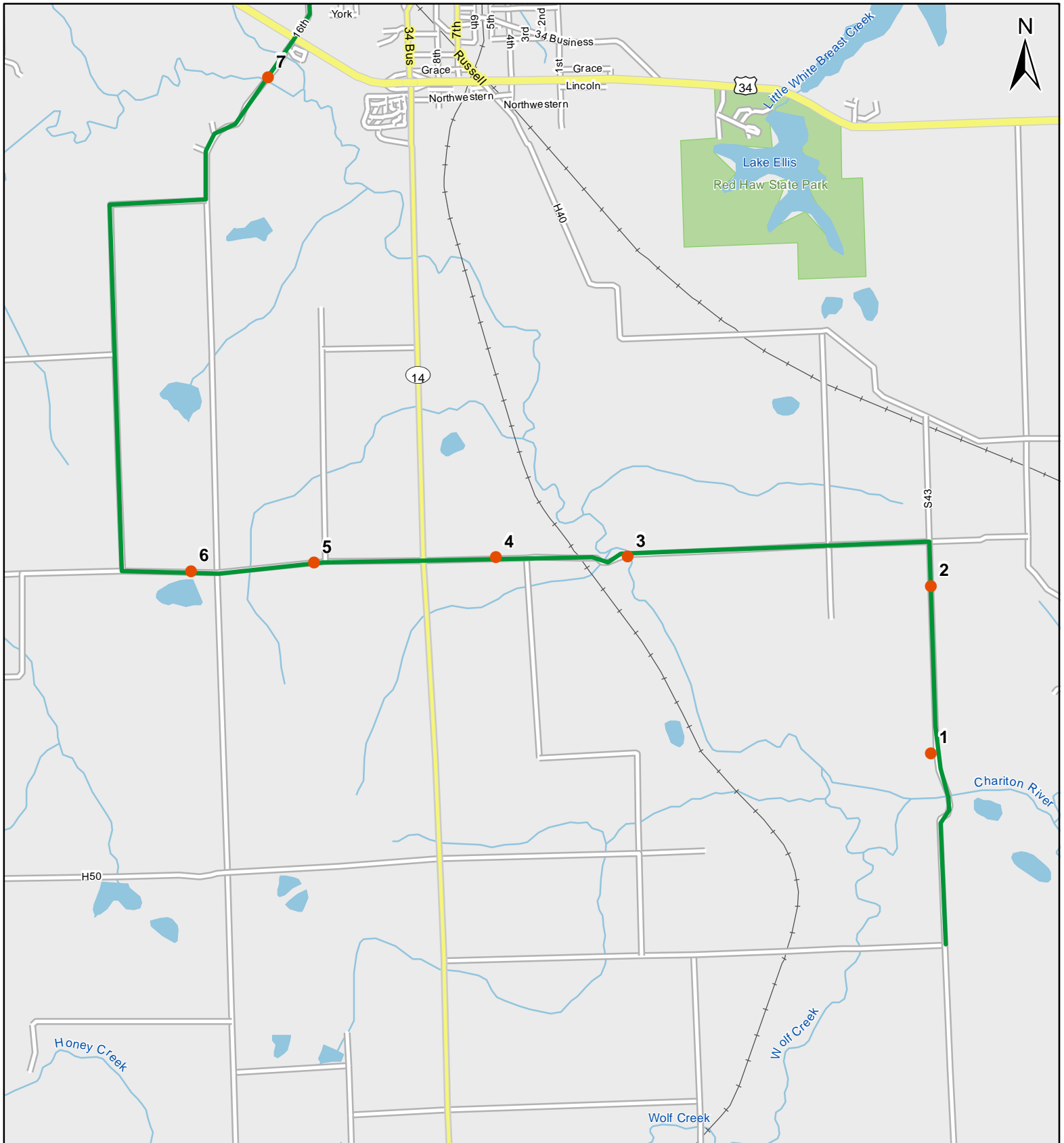
- Stop Locations
- Route Path



For more information, please visit the NAAMP website:
<http://www.pwrc.usgs.gov/naamp/>

Route:

360123 Chariton, IA



0 1 Miles

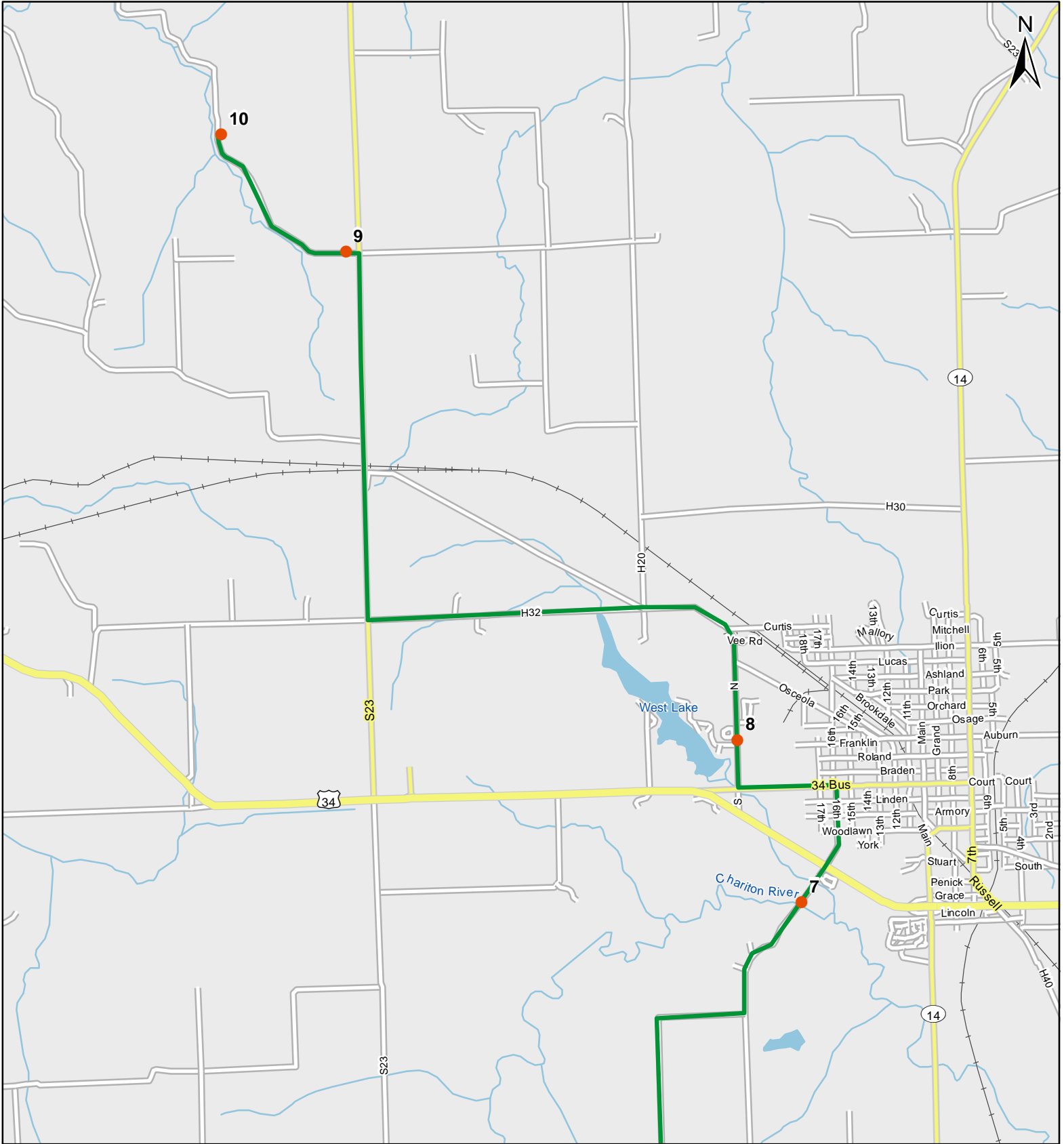
1:38,360

Legend

- Stop Locations
- Route Path

Route:

360123 Chariton, IA



0 1 Miles

1:42,200

Legend

- Stop Locations
- Route Path



Frog and Toad Call Survey Route Description

Route ID **360123**

Established:

Site Number	Name	County	Latitude	Longitude	Directions
1	0.9	Lucas	40.9552994	-93.2605972	Continue north on 255th Ave .2 miles to the drive on the left. Pull into the drive. Marshland.
2	1.7	Lucas	40.9673004	-93.2601013	Continue north on 255th Ave .8 miles past the brown house on the right and stop by the pond with a cedar tree windbreak.
3	3.4	Lucas	40.9701004	-93.2888031	Continue North on 255th and turn left (west) onto 450th st. Go 1.6 miles to the drive next to an old structural steel bridge. Lowland, marsh area.
4	4.1	Lucas	40.9704018	-93.3013	Continue west on 450th St., 0.7 miles to pond on south side of road.
5	5	Lucas	40.9704018	-93.3186035	Continue on 450th across Hwy 14, and stop at pond near intersection with 225th st.
6	5.6	Lucas	40.9700012	-93.3302994	Continue west on 450th St. 0.6 miles to pond on southside of road (left). Approximately 0.1 miles west of intersection with 220th Ave.
7	9	Lucas	41.0054016	-93.3215027	Continue on 450th until 215th st. Go north on 215th and merge east with 467th. Go north on 220th until the bridge over the Chariton River. Marsh on left.
8	10.4	Lucas	41.0182991	-93.3276978	Continue north on 220th across Hwy 34. Turn left onto court Ave in Chariton. Go past HyVee and turn North onto Hy-Vee road. Stop at pond on right (east) next to fairgrounds.



Frog and Toad Call Survey Route Description

9	15	Lucas	41.0578003	-93.3669968	Stay on H32 west and go north on S23. Turn left onto 192nd trl and park by pond on right/north.
10	16.1	Lucas	41.0674019	-93.3796005	Continue on 192nd west for 1.1 miles until the stream gets near the road on the left. An old wooden bridge crosses it.