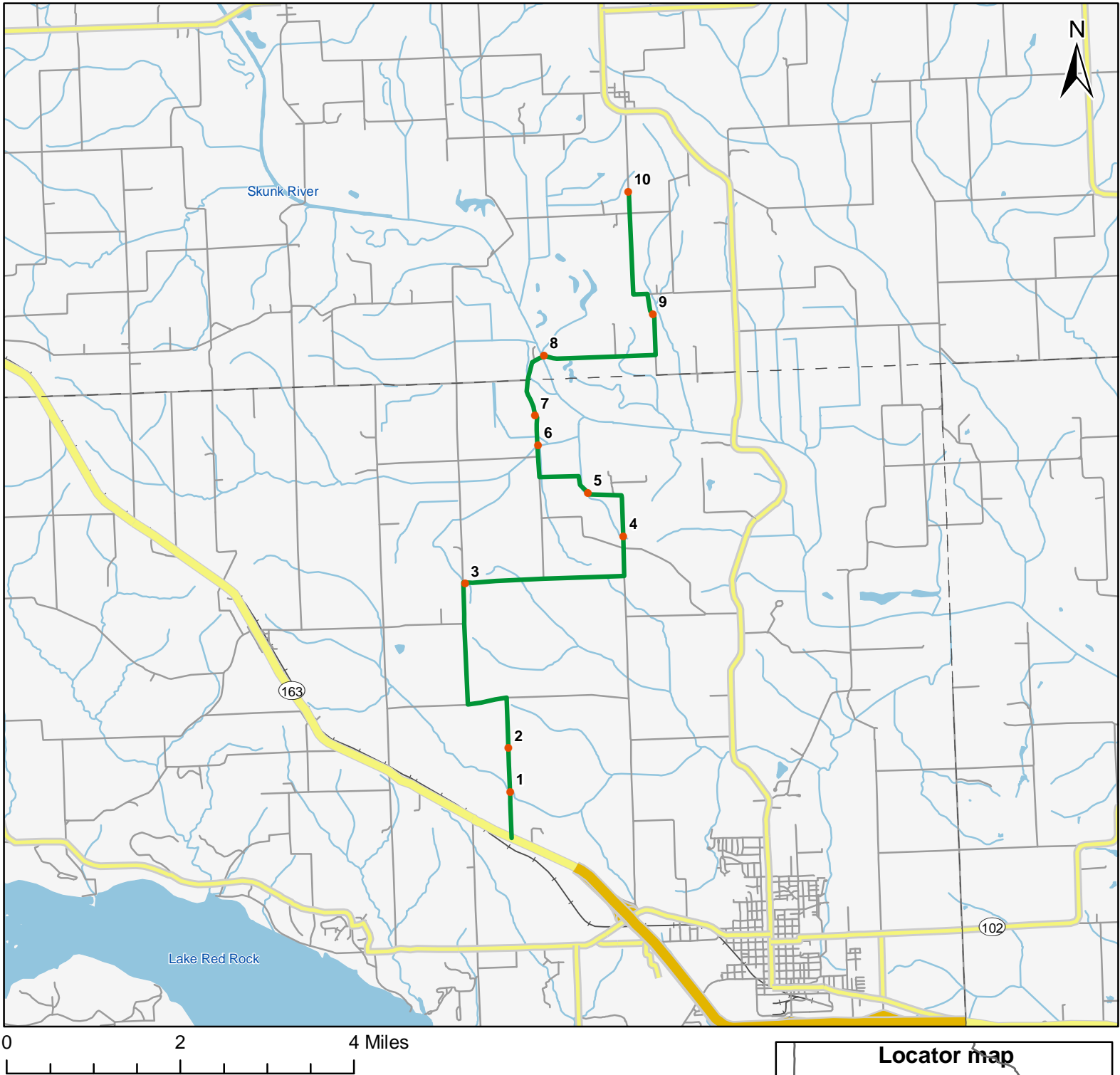


North American Amphibian Monitoring Program

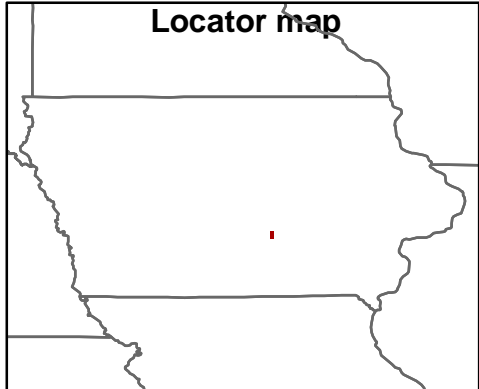


Route: 360218 Pella, IA



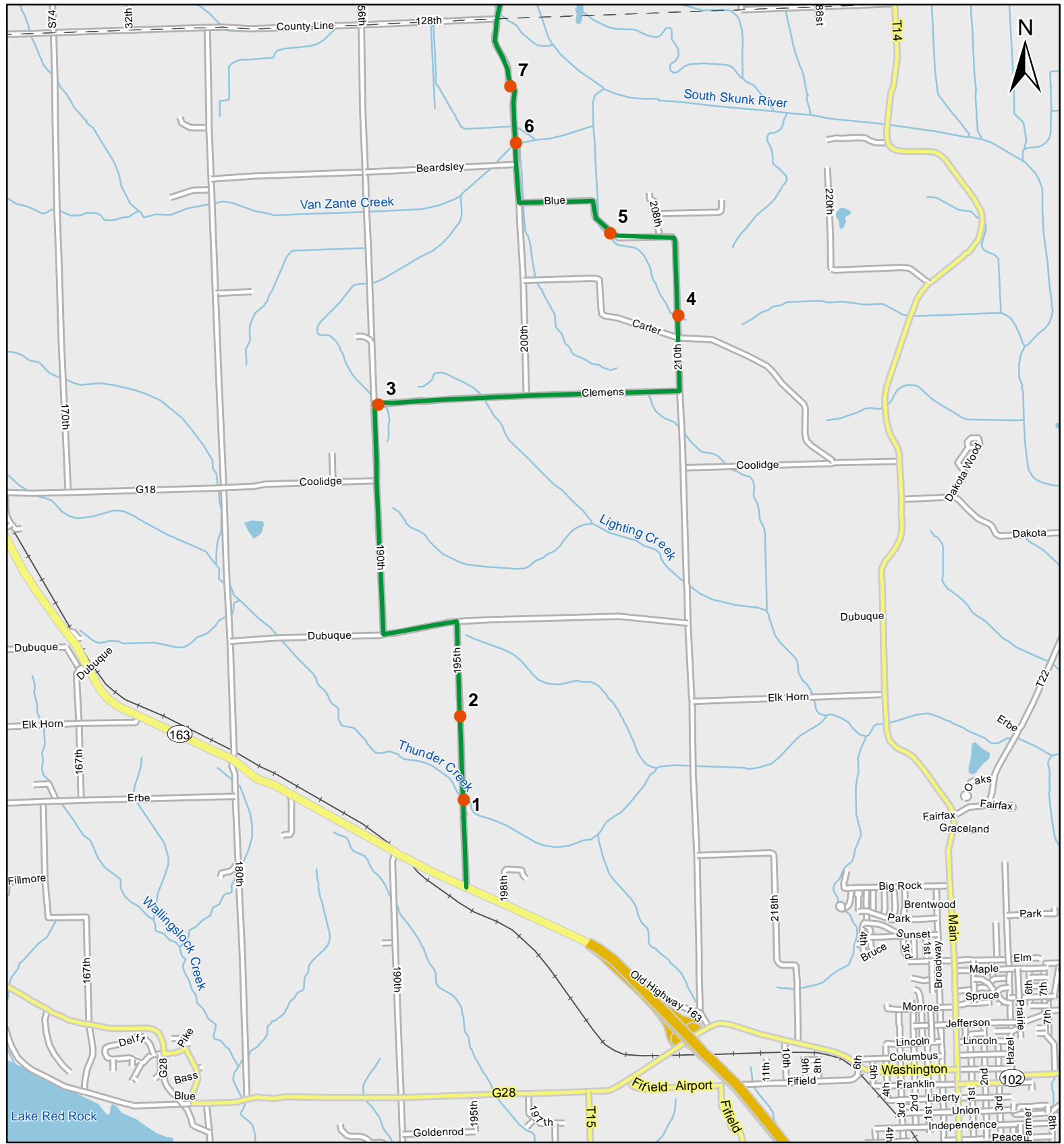
Legend

- Stop Locations
- Route Path



For more information, please visit the NAAMP website:
<http://www.pwrc.usgs.gov/naamp/>

Route: 360218 Pella, IA



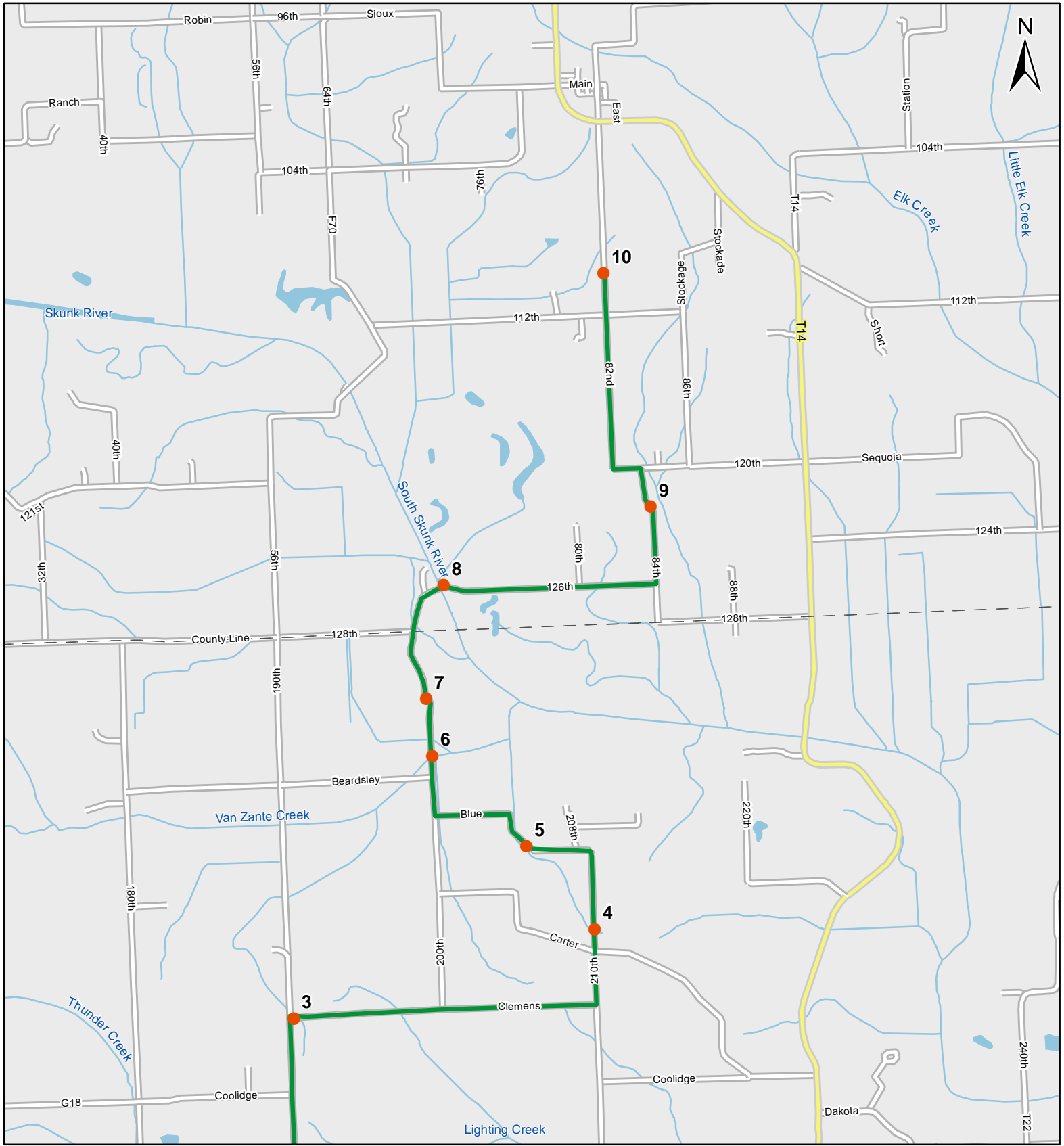
0 1 Miles

1:50,000

Legend

- Stop Locations
- Route Path

Route: 360218 Pella, IA



0 1 Miles

1:50,000

Legend

- Stop Locations
- Route Path



Frog and Toad Call Survey Route Description

Route ID **360218**

Established:

Site Number	Name	County	Latitude	Longitude	Directions
1	0.5	Marion	41.4350014	-92.976799	Start at intersection of 195th ave and Highway 163. North on 195th ave for .5 miles to little bridge over creek.
2	1	Marion	41.4427986	-92.9768982	Continue north on 195th ave for .5 miles. Farm pond on left (west) side of road.
3	3.5	Marion	41.4724007	-92.9858017	North for .5 miles. Left on Dubuque. West for .5 miles and right onto 190th ave. Travel north for 1.5 miles. At triangle intersection there is a large farm pond NW of road.
4	5.9	Marion	41.4798012	-92.9478989	East on Clemens for 1.9 miles. Left on 210th ave. Continue north for .5 miles. Stop on left (west) side of road. Creek.
5	6.8	Marion	41.4877014	-92.9560013	North on 210th ave for .5 miles follow curve to left and continue west for .4 miles. Stop by creek on left side of road.
6	7.9	Marion	41.4964981	-92.9673996	.7 miles, take a right on 200th. Follow north for .4 miles to creek.
7	8.2	Marion	41.5018997	-92.9679031	Continue north for .3 miles. Creek that runs through and little flooded pool on right (east) side of road.
8	8.6	Jasper	41.5125008	-92.9652023	Continue north for .7 miles to bridge over large creek.
9	10.5	Jasper	41.5191002	-92.9391022	Continue on 126th ave. Turn left onto 84th, recently created farm pond on right (east) side of road or you could continue .2 more miles to interection of 120th ave and 84th. Farm pond and creek there.



Frog and Toad Call Survey Route Description

10

12.3

Jasper

41.5411987

-92.9439011

Right on 120th ave. Left on 86th. Continue for 1.1 miles. Left on 112th. Continue on 112 for .4 miles to the west. Right on 82nd st .3 miles north. Farm pond on left (west) side of road