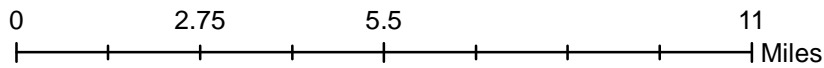
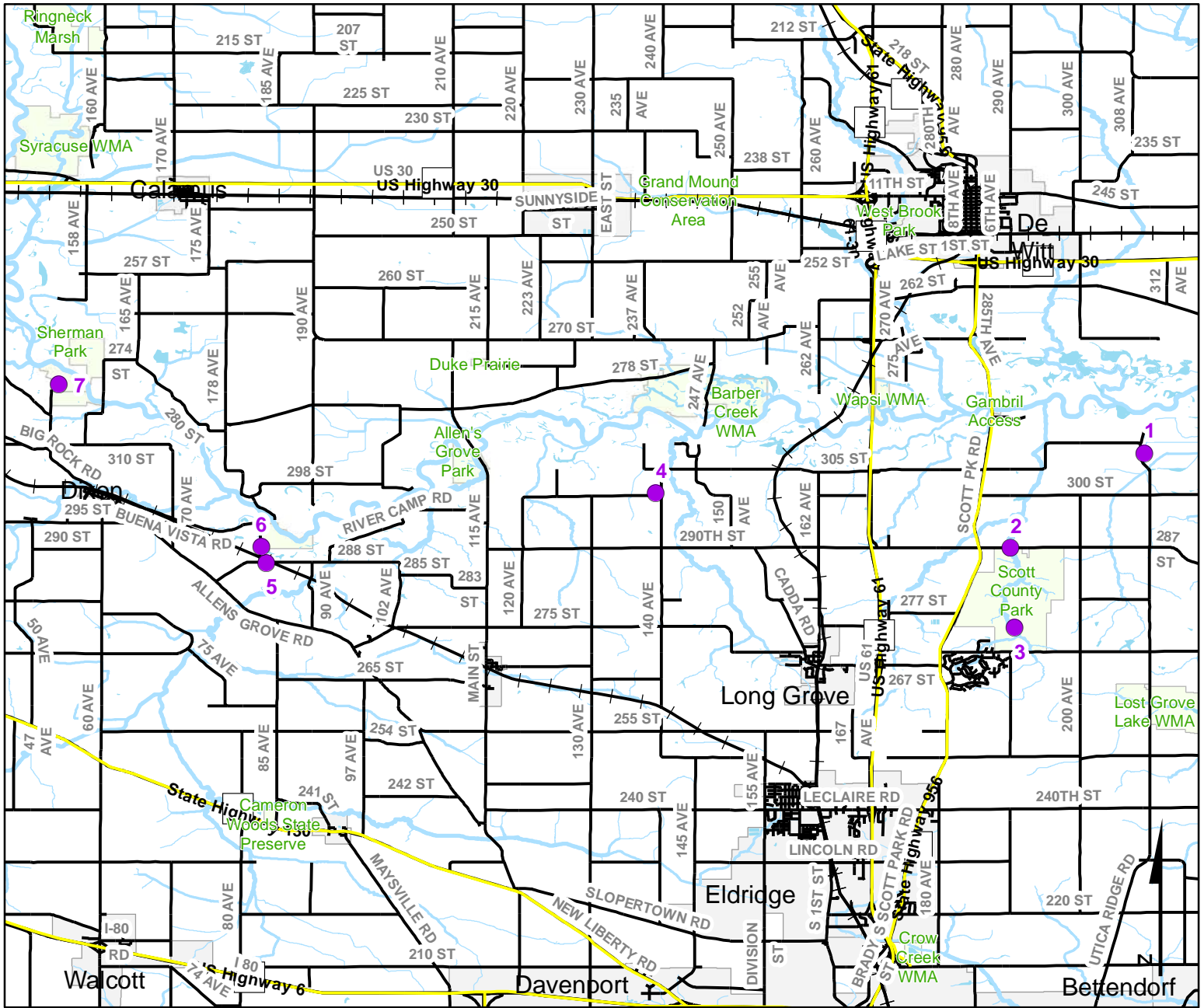


# Volunteer Wildlife Monitoring Program (VWMP) Frog and Toad Survey

Route ID: 93 County: Scott

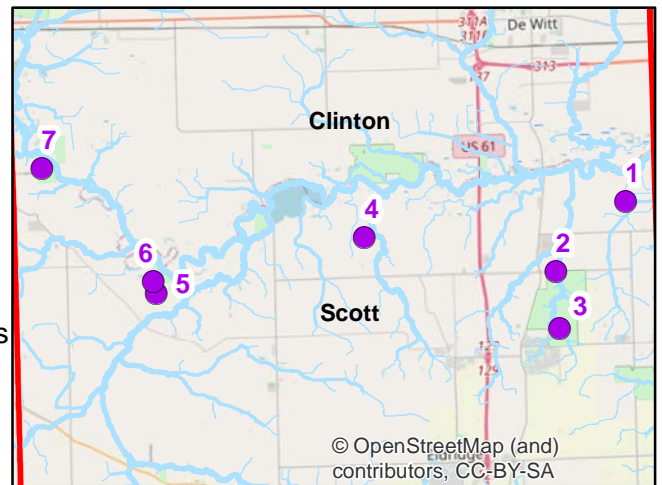


**DNR**  
Volunteer  
Wildlife  
Monitoring  
Program



## Legend

- Trails
- Survey Stops

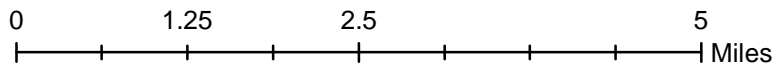
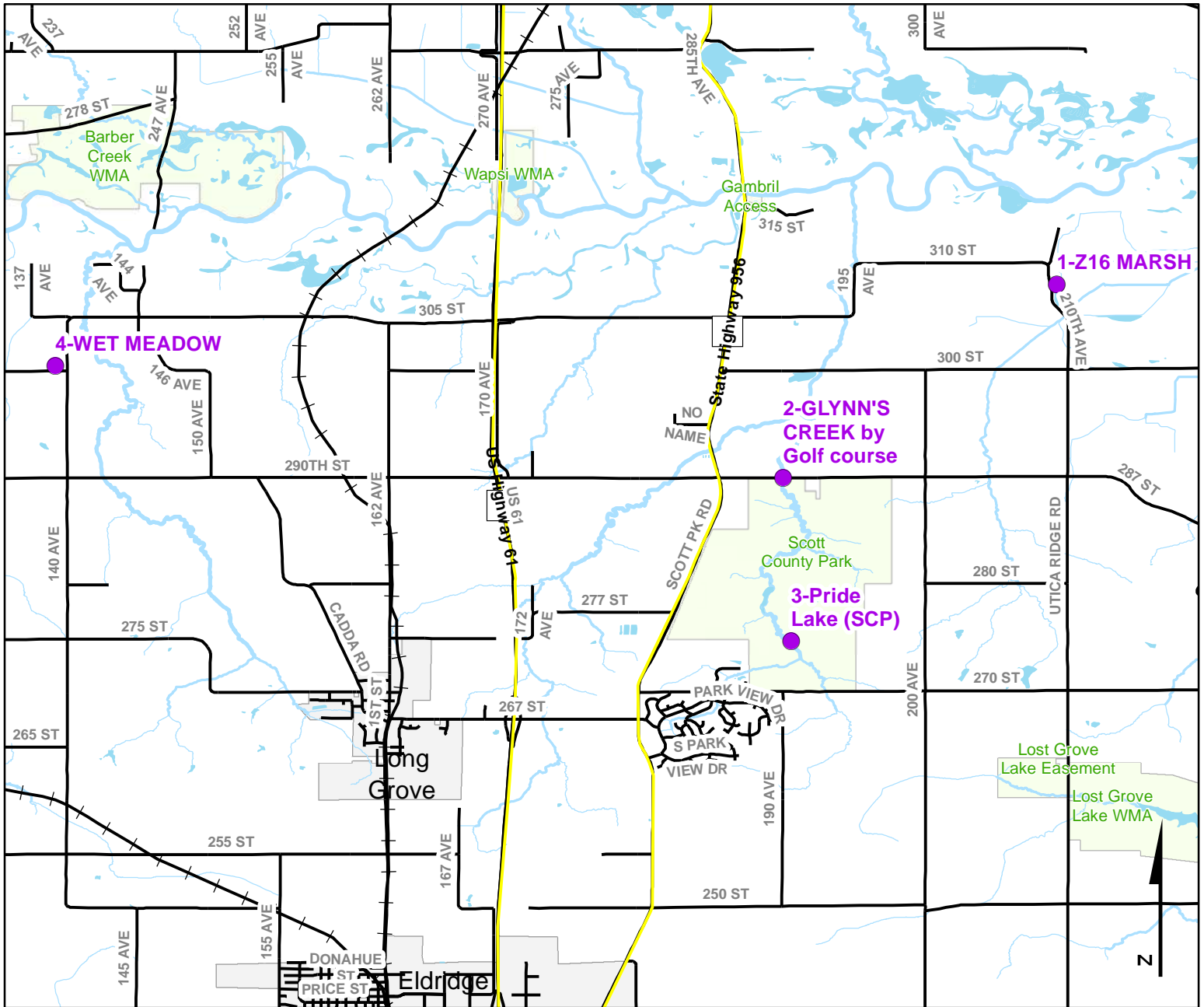


© OpenStreetMap (and contributors), CC-BY-SA

# Volunteer Wildlife Monitoring Program (VWMP) Frog and Toad Survey



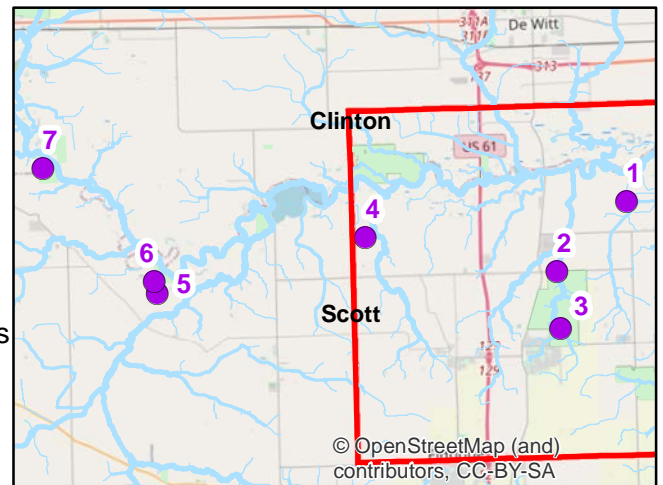
Route ID: 93 County: Scott



**DNR**  
**Volunteer Wildlife Monitoring Program**

## Legend

- Trails
- Survey Stops

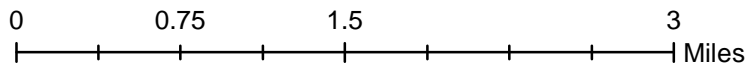
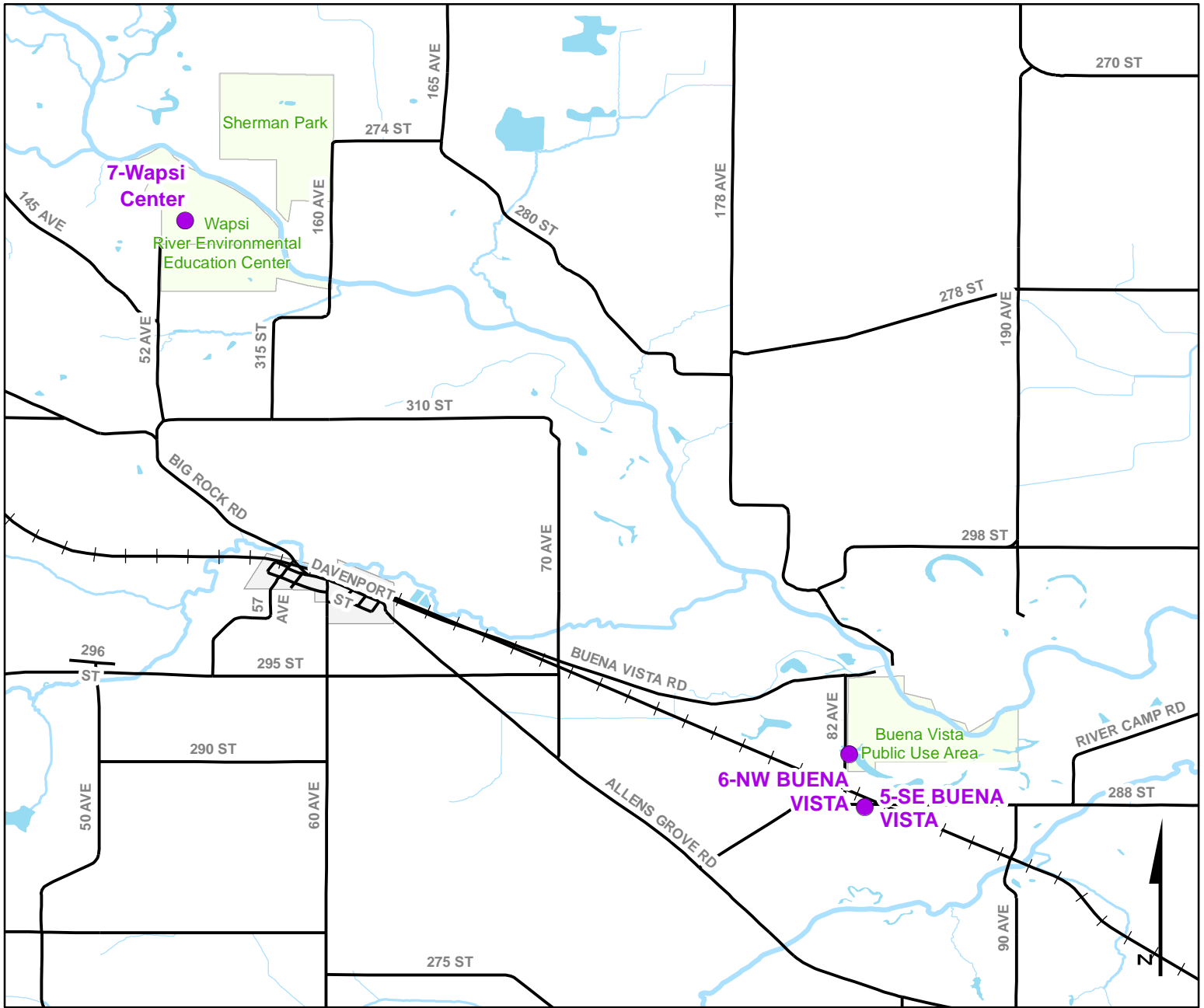


© OpenStreetMap (and) contributors, CC-BY-SA

# Volunteer Wildlife Monitoring Program (VWMP) Frog and Toad Survey

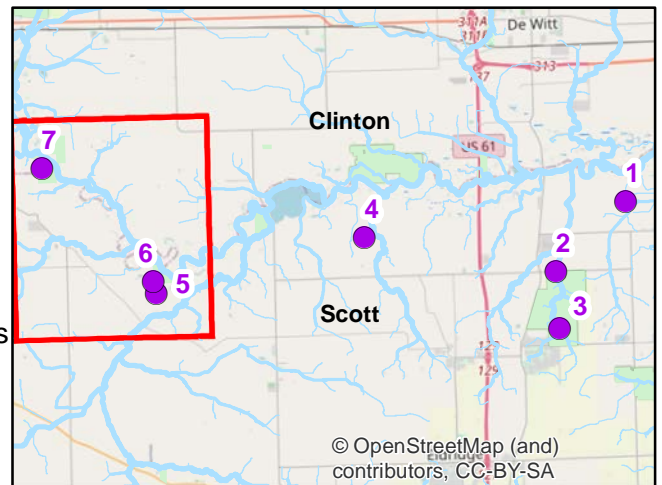


Route ID: 93 County: Scott



## Legend

- Trails
- Survey Stops



# VOLUNTEER WILDLIFE MONITORING PROGRAM

## Survey Route Description

**Route** 93

**Name** Rebecca Baugh

**Address** 319 E. Laurretta St.

**Phone**

**E-mail** rebecca.baugh@scottcountyiowa.com

Site No	Site Name	County	T	R	S	Q	Latitude	Longitude	Wetland Type
1	Z16 MARSH	Scott	80N	4E	9	NE	41.7540784	-90.4922052	Cattail Marsh
2	GLYNN'S CREEK by Golf course	Scott	80N	04E	17	SW	41.7277309	-90.5293946	Timbered Riverine
	Description:	This is where Glynn's Creek intersects with Scott County Park at Pioneer Village.							
3	WET MEADOW	Scott	80N	3E	8	SE	41.7429642	-90.6282460	Wet-Meadow
4	SE BUENA VISTA	Scott	80N	2E	21	NW	41.7235565	-90.7367347	Shrub Marsh
5	NW BUENA VISTA	Scott	80N	2E	16	SW	41.7280409	-90.7380681	Ephemeral Flooded Area
6	Wapsi Center	Scott	81N	01E	36	SW	41.7733487	-90.7944480	Ephemeral Flooded Area
	Description:	This is the ephemeral pond at the Wapsi River Center.							
7	Pride Lake (SCP)	Scott	80N	04E	29		41.7055590	-90.5283110	Permanent Open Water
	Description:	Pride Lake at Scott County Park.							