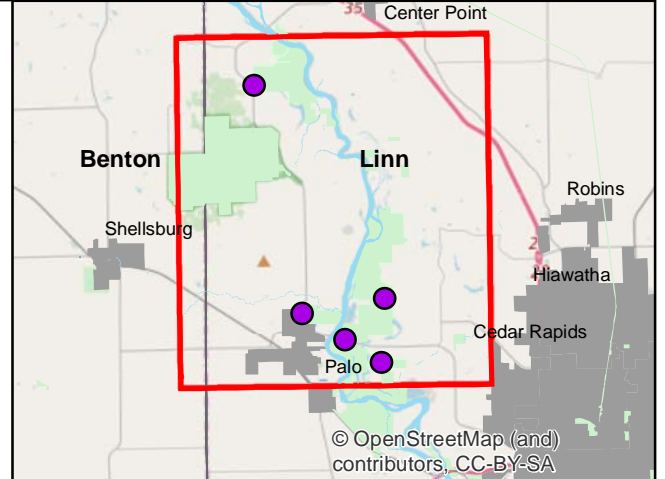
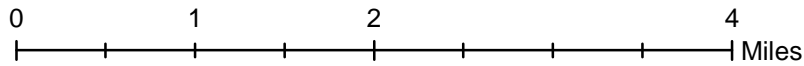
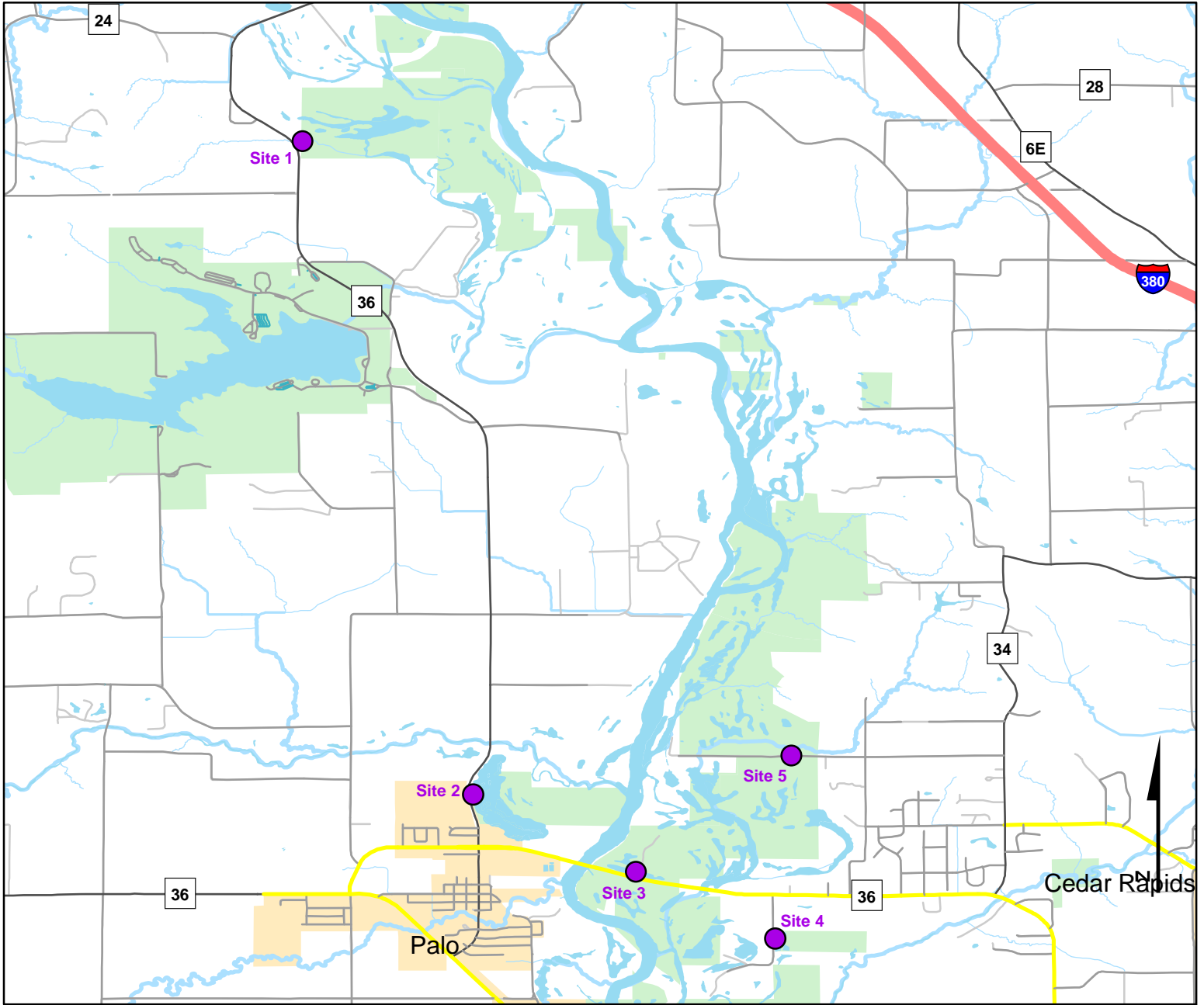




# Volunteer Wildlife Monitoring Program (VWMP) Frog and Toad Survey

Route ID: 283 County: Linn

Click for Google Maps to Site 1: <https://www.google.com/maps/dir/?api=1&destination=42.1445690266,-91.814031975>



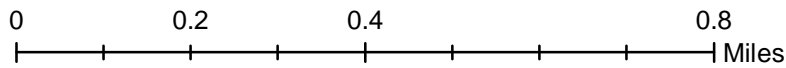
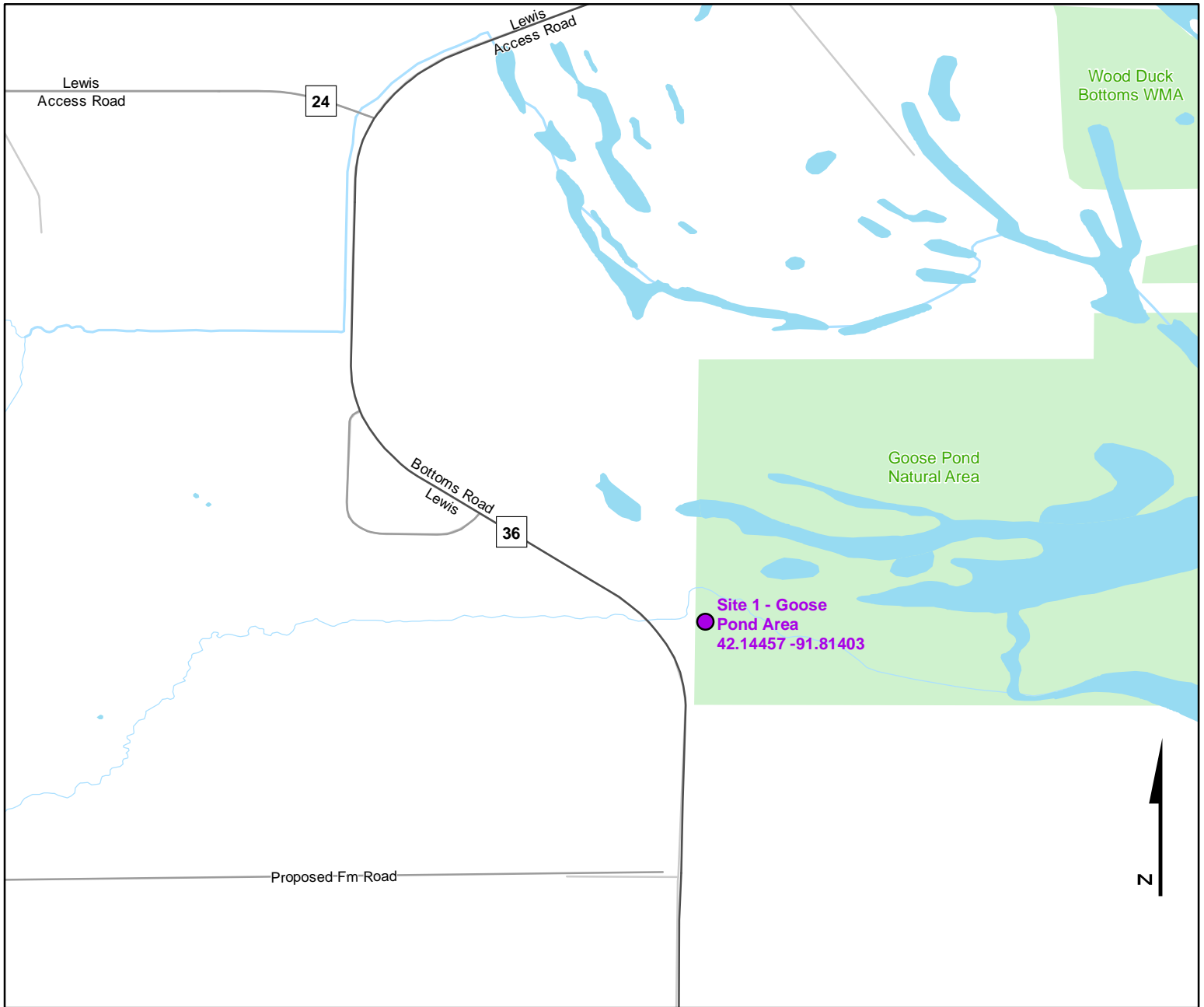
© OpenStreetMap (and) contributors, CC-BY-SA



# Volunteer Wildlife Monitoring Program (VWMP) Frog and Toad Survey

Route ID: 283 County: Linn

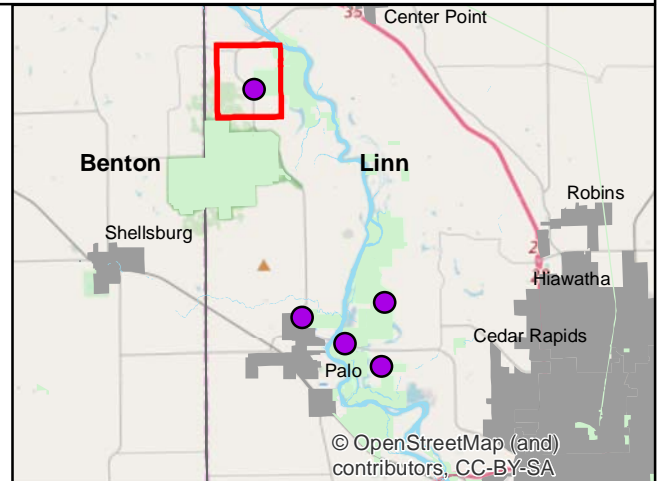
Click for Google Maps to Site 1: <https://www.google.com/maps/dir/?api=1&destination=42.1445690266,-91.814031975>



**DNR**  
**Volunteer  
 Wildlife  
 Monitoring  
 Program**

## Legend

----- Trails



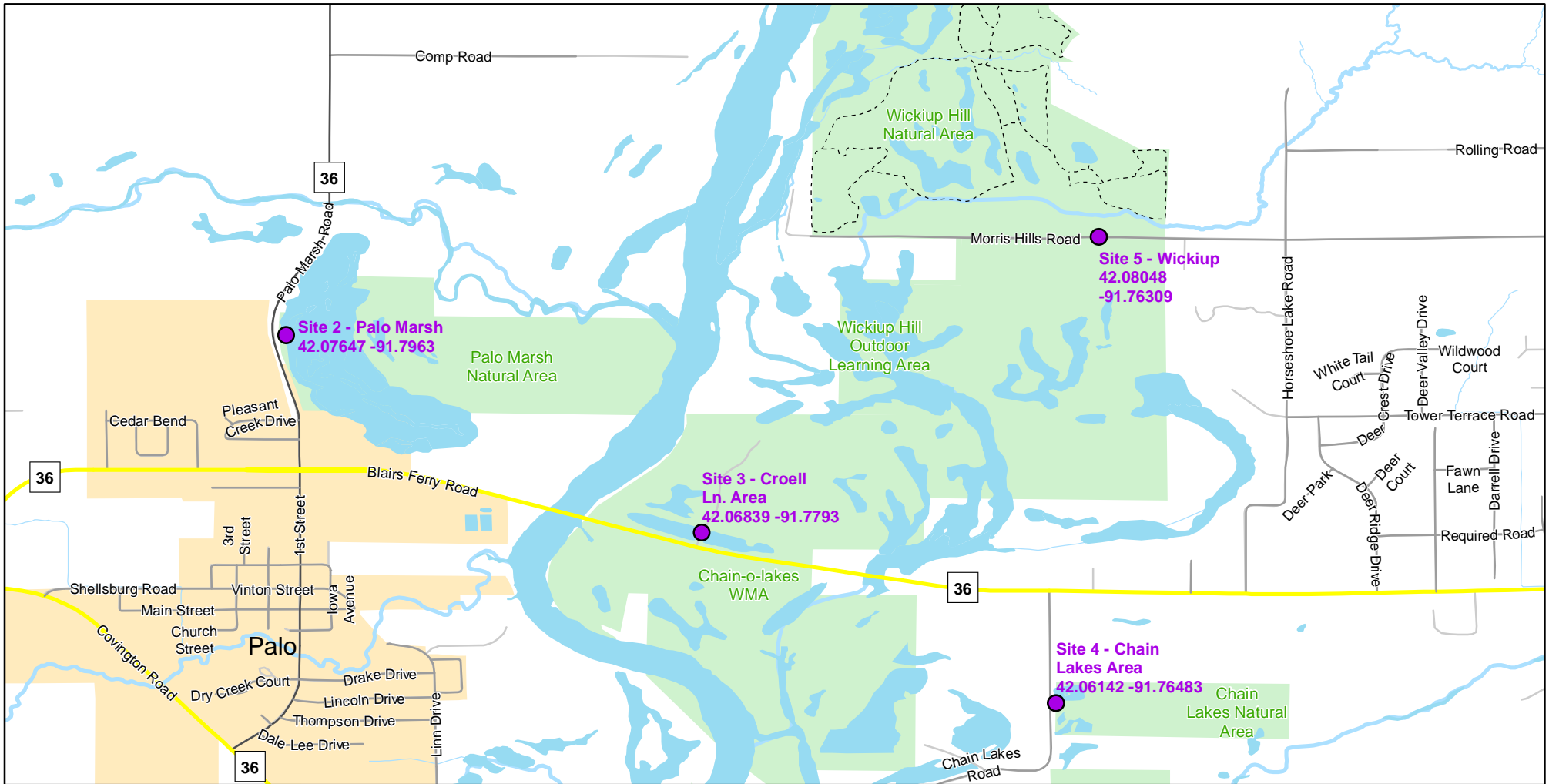
© OpenStreetMap (and) contributors, CC-BY-SA



# Volunteer Wildlife Monitoring Program (VWMP) Frog

Route ID: 283 County: Linn

Click for Google Maps to Site 1: <https://www.google.com/maps/dir/?api=1&destination=42.1445690266,-91.814031975>

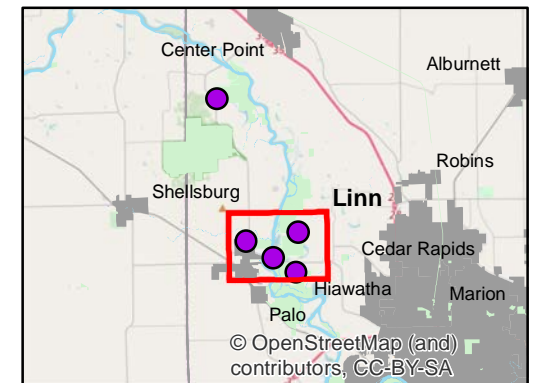
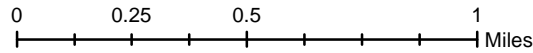


Enlarged View of Site 3



## Legend

----- Trails





# Frog and Toad Call Survey Route Description

Route ID **283**

Established: **2019**

Site Number	Name	County	Latitude	Longitude	Directions
1	Goose Pond Area	Linn	42.144569	-91.814032	Public area with grassland and timber adjacent to Cedar River backwaters. Wet to marshy lowlands. Entrance is off of Lewis Bottoms Rd, south of intersection with Lewis Bottoms Ln
2	Palo Marsh	Linn	42.0764737	-91.7962986	Cedar River backwaters with shallow ponds, lots of willow, and some timber. Entrance is 1/4 mile north of Pleasant Creek Dr on Palo Marsh Rd: 2935 Palo Marsh Rd.
3	Croell Ln. Area	Linn	42.068388	-91.779305	Cedar River overflow in a greenbelt area. Willow and some timber but mostly open close to the road. Two ponds on each side of Croell Ln north of the intersection with Hwy E36
4	Chain Lakes Area	Linn	42.0614229	-91.7648328	Seasonally flooded Cedar River backwaters with timber and ponds. Ephemeral in dry years with marshy grasslands. On chain Lakes Rd 1/4 mile south of intersection with E36
5	Wickiup	Linn	42.080484	-91.763087	Prairie pothole grassland that is seasonally flooded by the Cedar River. Listening point is at the entrance of the drive to the learning center