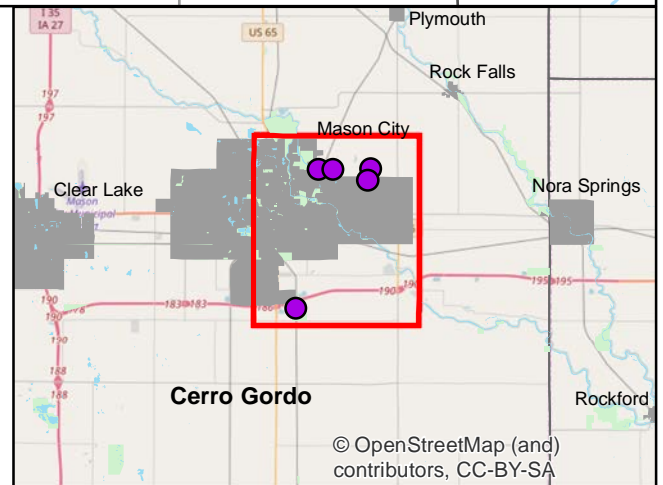
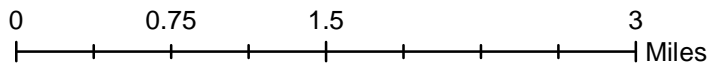
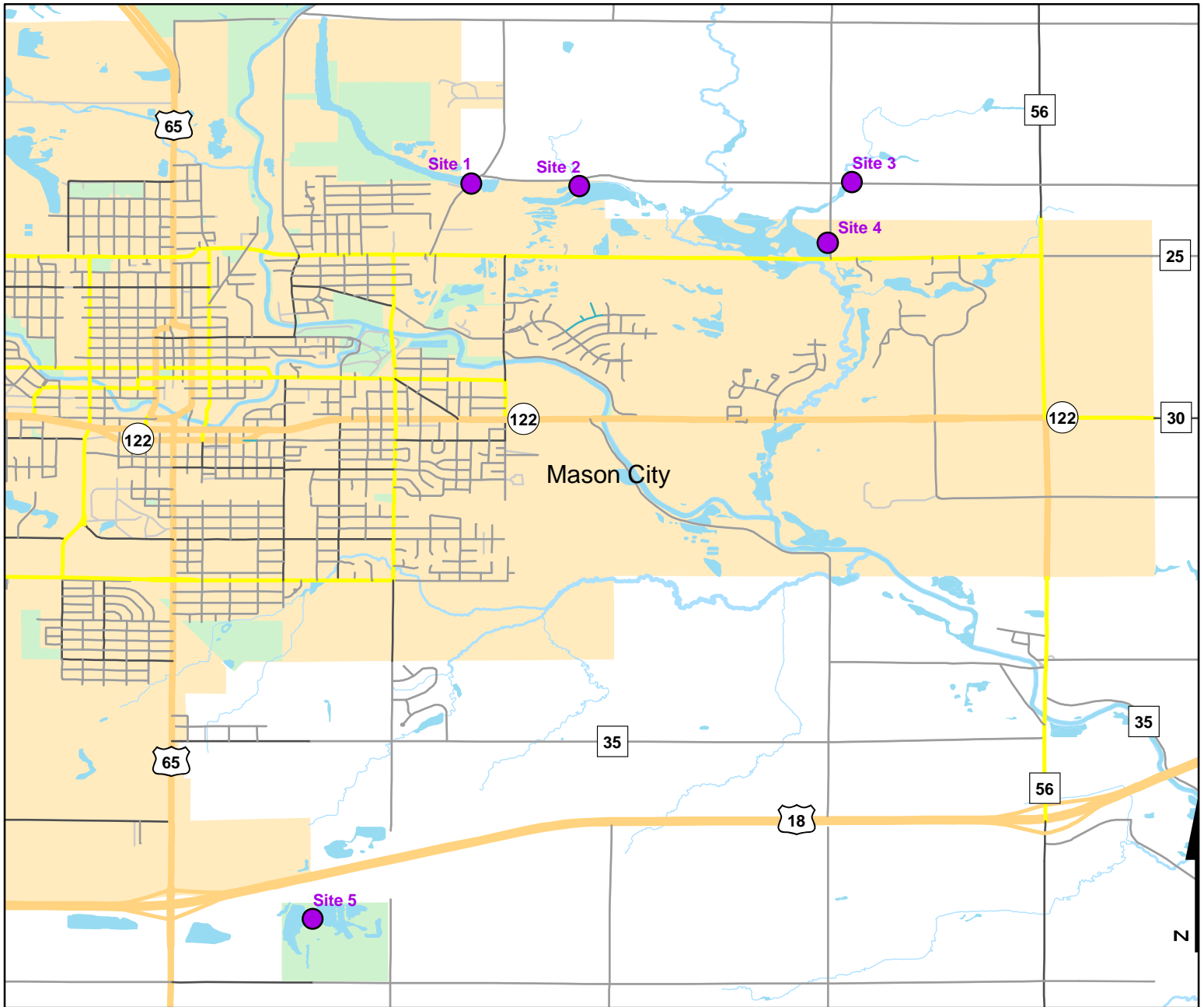




Volunteer Wildlife Monitoring Program (VWMP) Frog and Toad Survey

Route ID: 79 County: Cerro Gordo

Click for Google Maps to Site 1: <https://www.google.com/maps/dir/?api=1&destination=43.1693335774,-93.174154444>

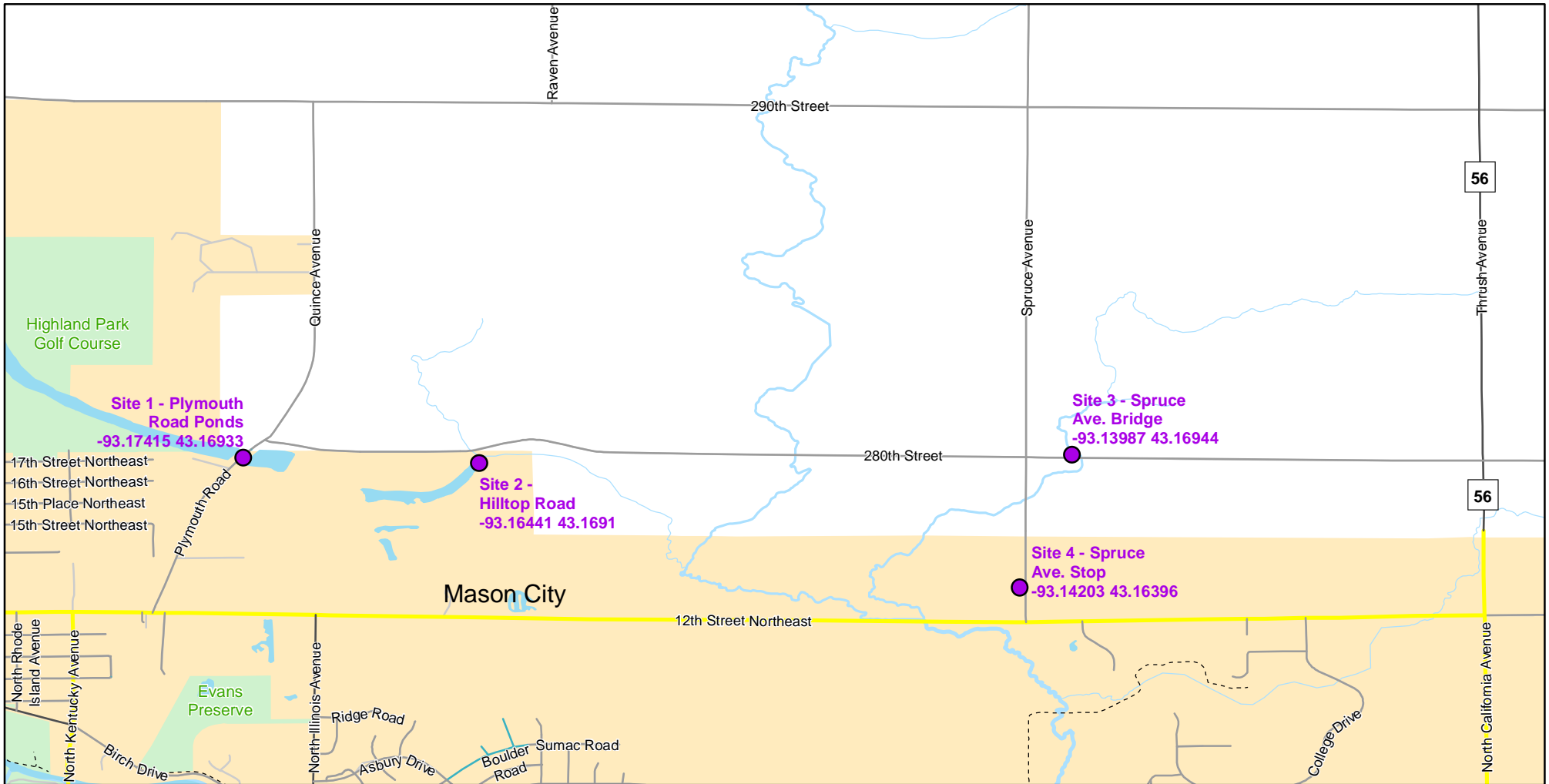




Volunteer Wildlife Monitoring Program (VWMP) Frog

Route ID: 79 County: Cerro Gordo

Click for Google Maps to Site 1: <https://www.google.com/maps/dir/?api=1&destination=43.1693335774,-93.174154444>

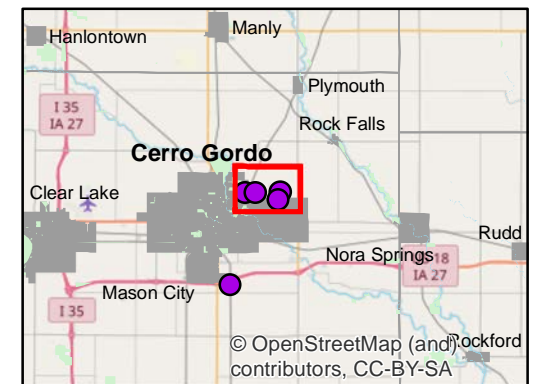
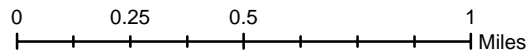


Enlarged View of Site 1



Legend

----- Trails

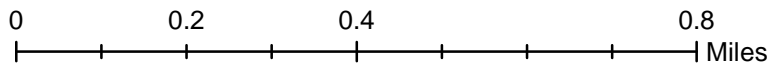
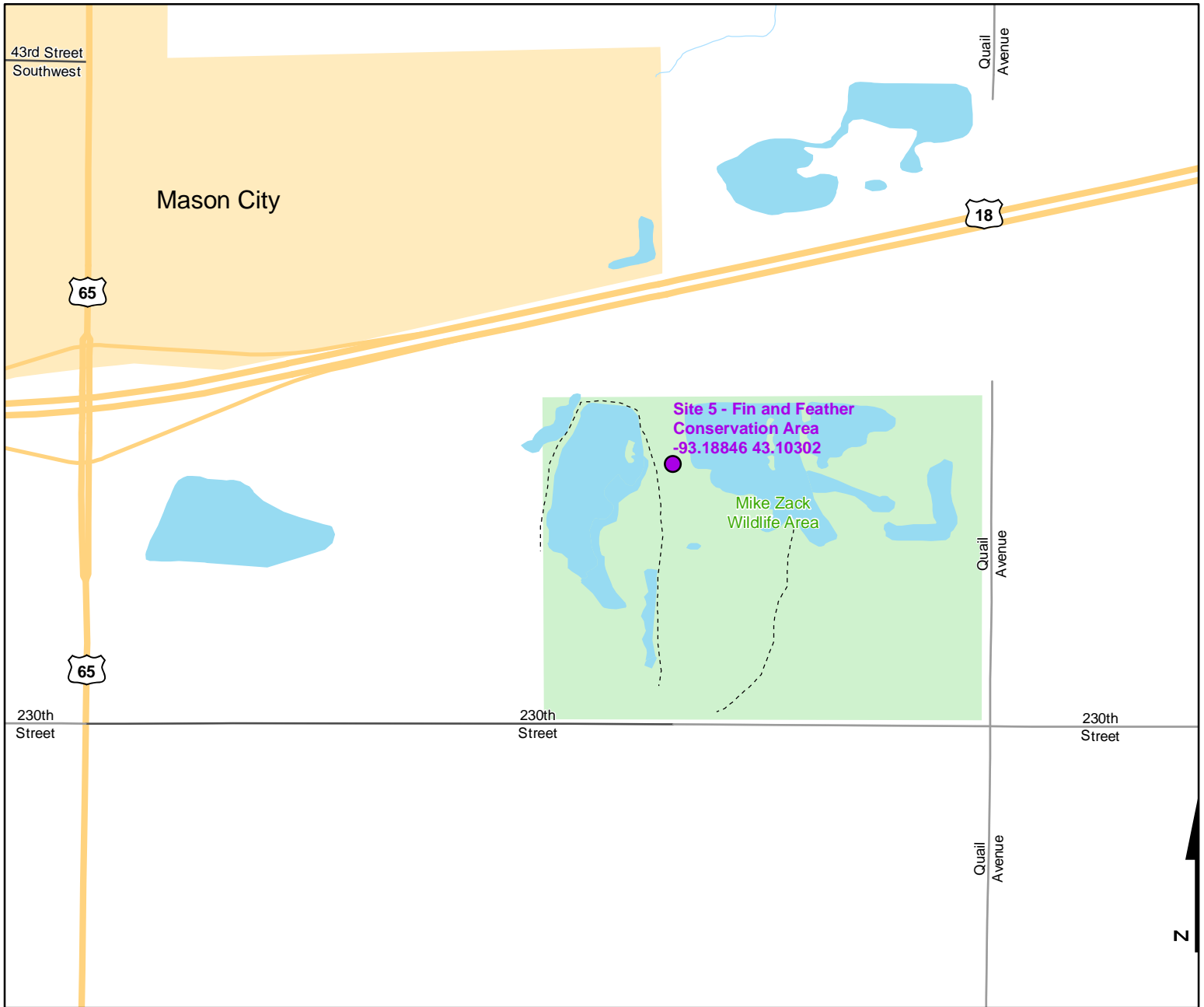




Volunteer Wildlife Monitoring Program (VWMP) Frog and Toad Survey

Route ID: 79 County: Cerro Gordo

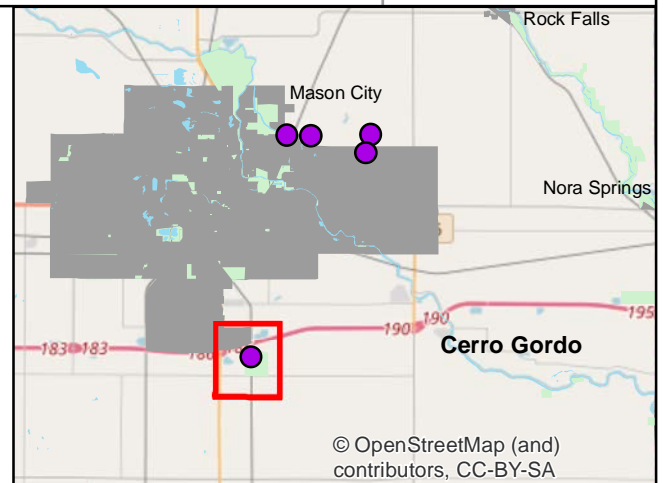
Click for Google Maps to Site 1: <https://www.google.com/maps/dir/?api=1&destination=43.1693335774,-93.174154444>



DNR
Volunteer Wildlife Monitoring Program

Legend

----- Trails





Frog and Toad Call Survey Route Description

Route ID **79**

Established: 1992

Site Number	Name	County	Latitude	Longitude	Directions
1	Plymouth Road Ponds	Cerro Gordo	43.1693336	-93.1741544	Telephone pole 0.5 mile north of 12th St. NE
2	Hilltop Road	Cerro Gordo	43.1690959	-93.1644102	0.5 mile east of Plymouth Rd. at speed limit sign.
3	Spruce Ave. Bridge	Cerro Gordo	43.1694437	-93.1398676	0.08 mile east of Spruce. Ave. on 280th St.
4	Spruce Ave. Stop	Cerro Gordo	43.1639571	-93.1420324	0.3 mile south of 280th on spruce Ave. - Road Ditch
5	Fin and Feather Conservation Area	Cerro Gordo	43.103017	-93.1884554	By willows, middle of west side of cattails