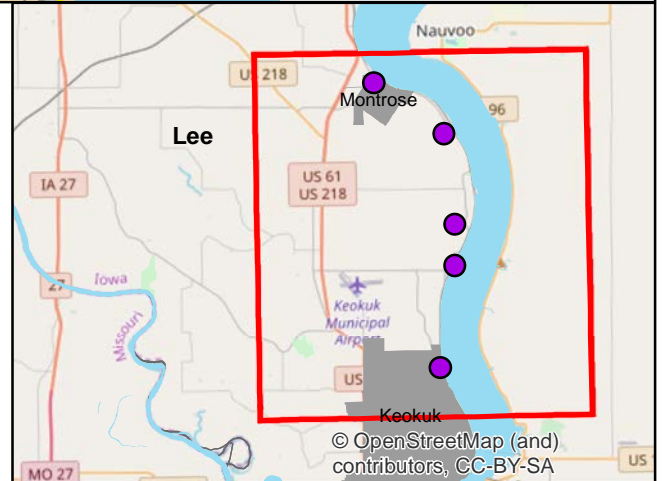
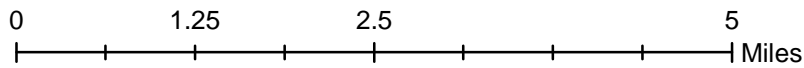
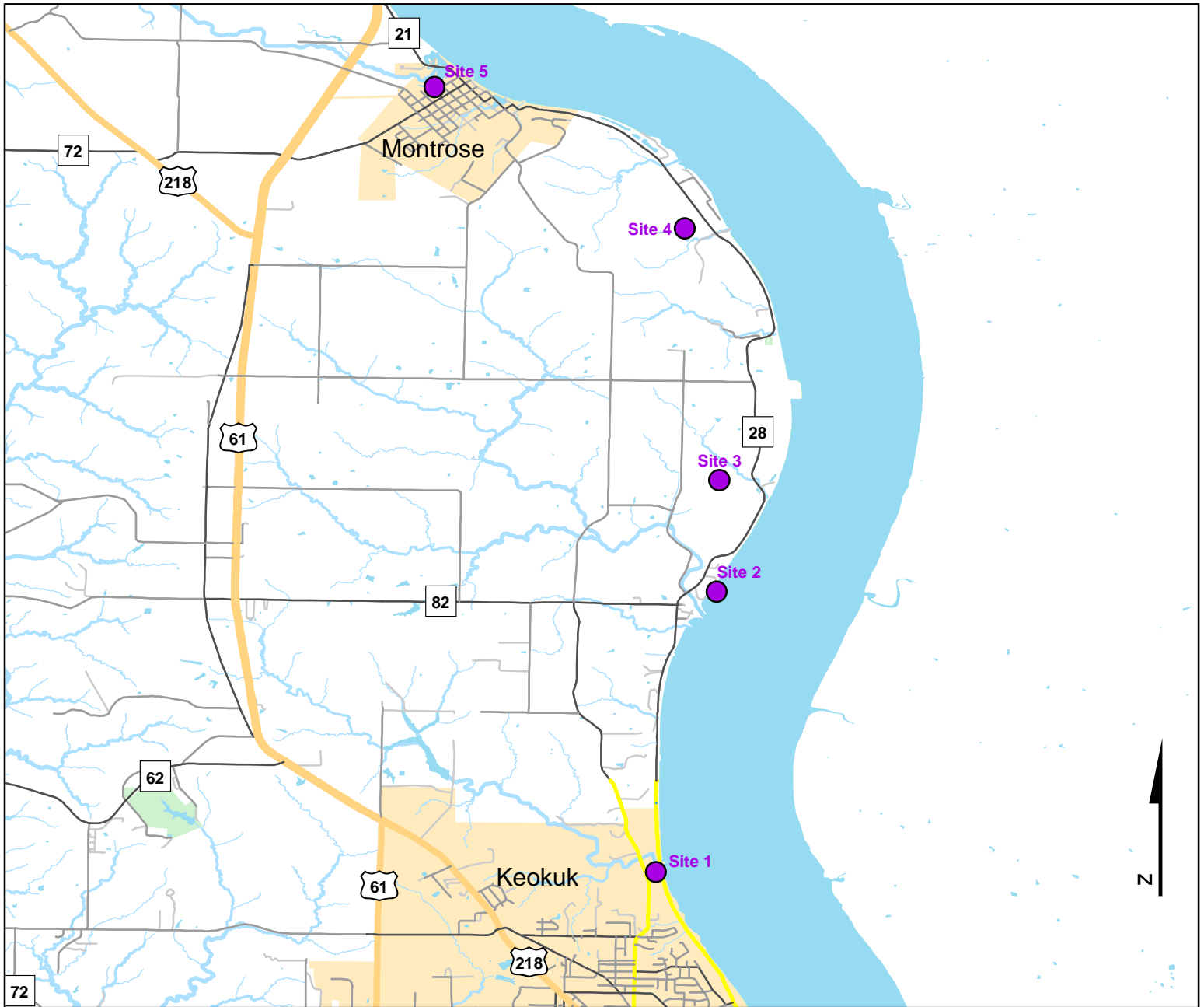




# Volunteer Wildlife Monitoring Program (VWMP) Frog and Toad Survey

Route ID: 56 County: Lee

Click for Google Maps to Site 1: <https://www.google.com/maps/dir/?api=1&destination=40.4297617948,-91.3899125216>

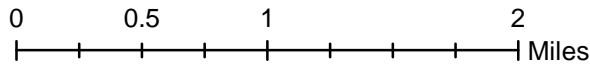
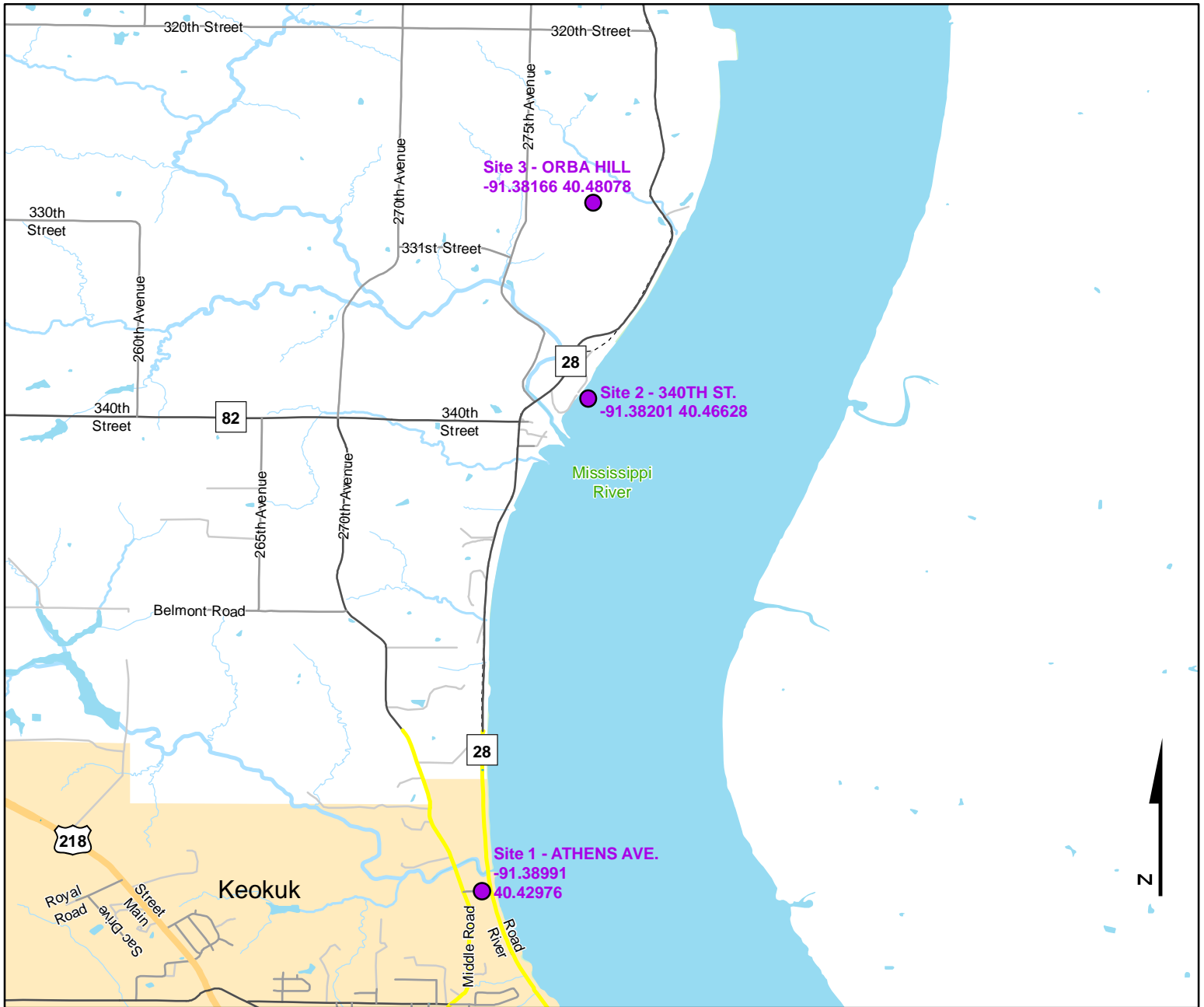




# Volunteer Wildlife Monitoring Program (VWMP) Frog and Toad Survey

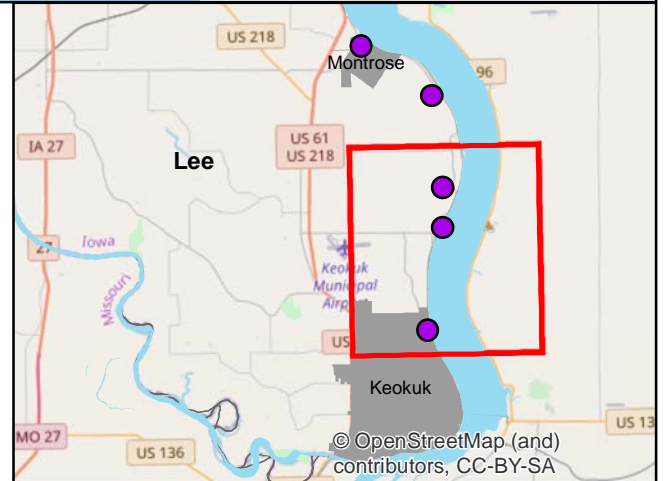
Route ID: 56 County: Lee

Click for Google Maps to Site 1: <https://www.google.com/maps/dir/?api=1&destination=40.4297617948,-91.3899125216>



## Legend

----- Trails

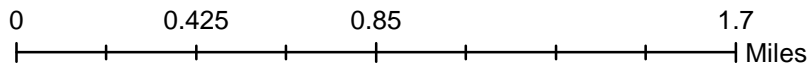
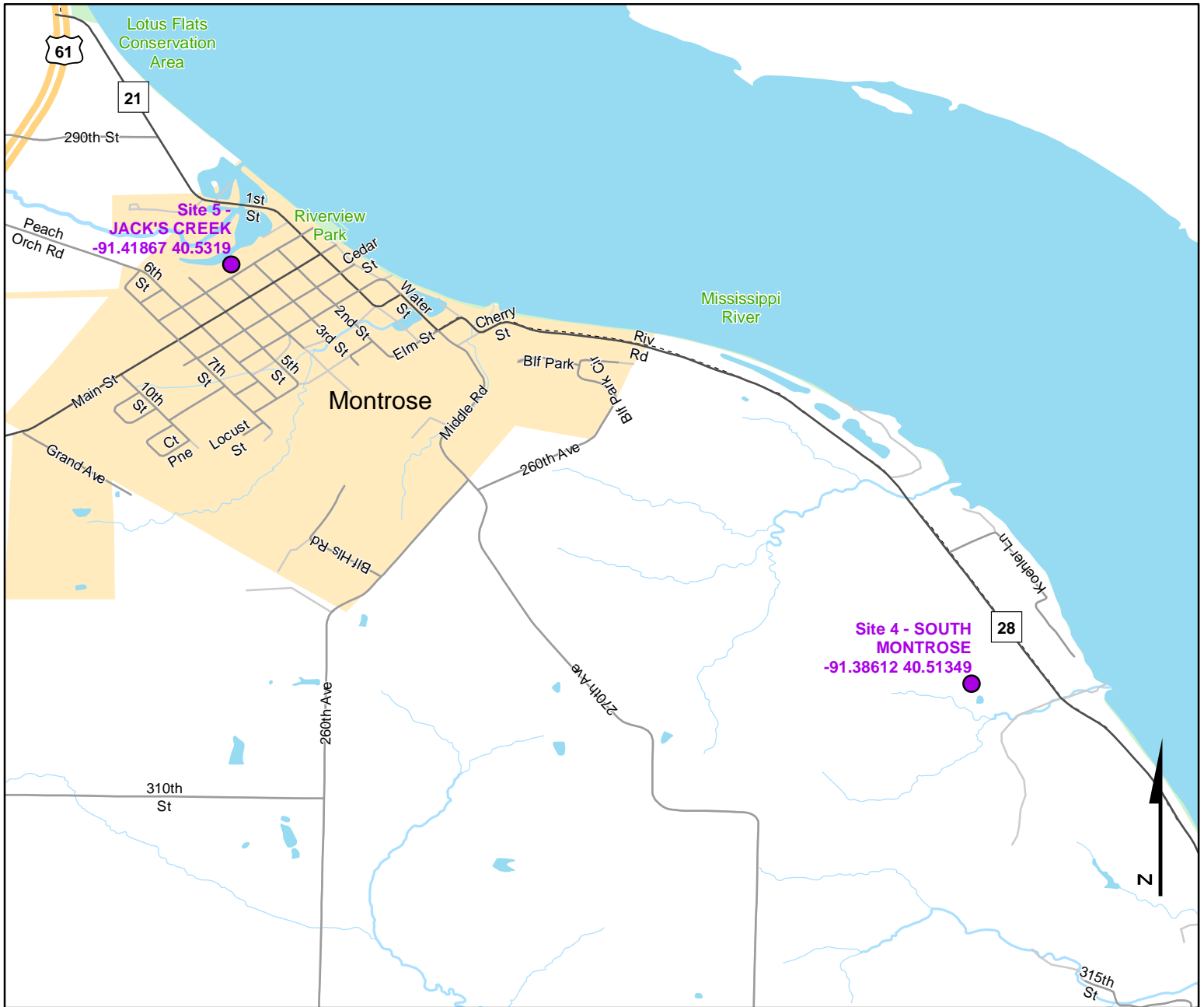




# Volunteer Wildlife Monitoring Program (VWMP) Frog and Toad Survey

Route ID: 56 County: Lee

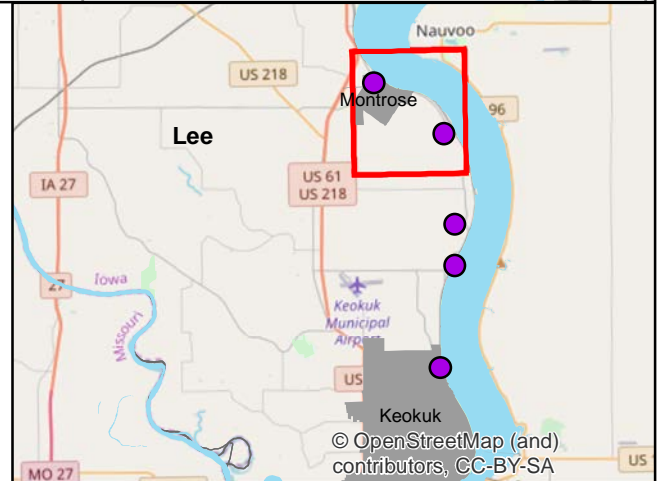
Click for Google Maps to Site 1: <https://www.google.com/maps/dir/?api=1&destination=40.4297617948,-91.3899125216>



**DNR**  
**Volunteer Wildlife Monitoring Program**

## Legend

----- Trails





# Frog and Toad Call Survey Route Description

Route ID **56**

Established: 1992

Site Number	Name	County	Latitude	Longitude	Directions
1	ATHENS AVE.	Lee	40.4297618	-91.3899125	On Athens Road, connects 270th Ave and River Rd.
2	340TH ST.	Lee	40.4662801	-91.3820108	
3	ORBA HILL	Lee	40.4807812	-91.3816626	
4	SOUTH MONTROSE	Lee	40.5134879	-91.386117	
5	JACK'S CREEK	Lee	40.5319031	-91.4186685	