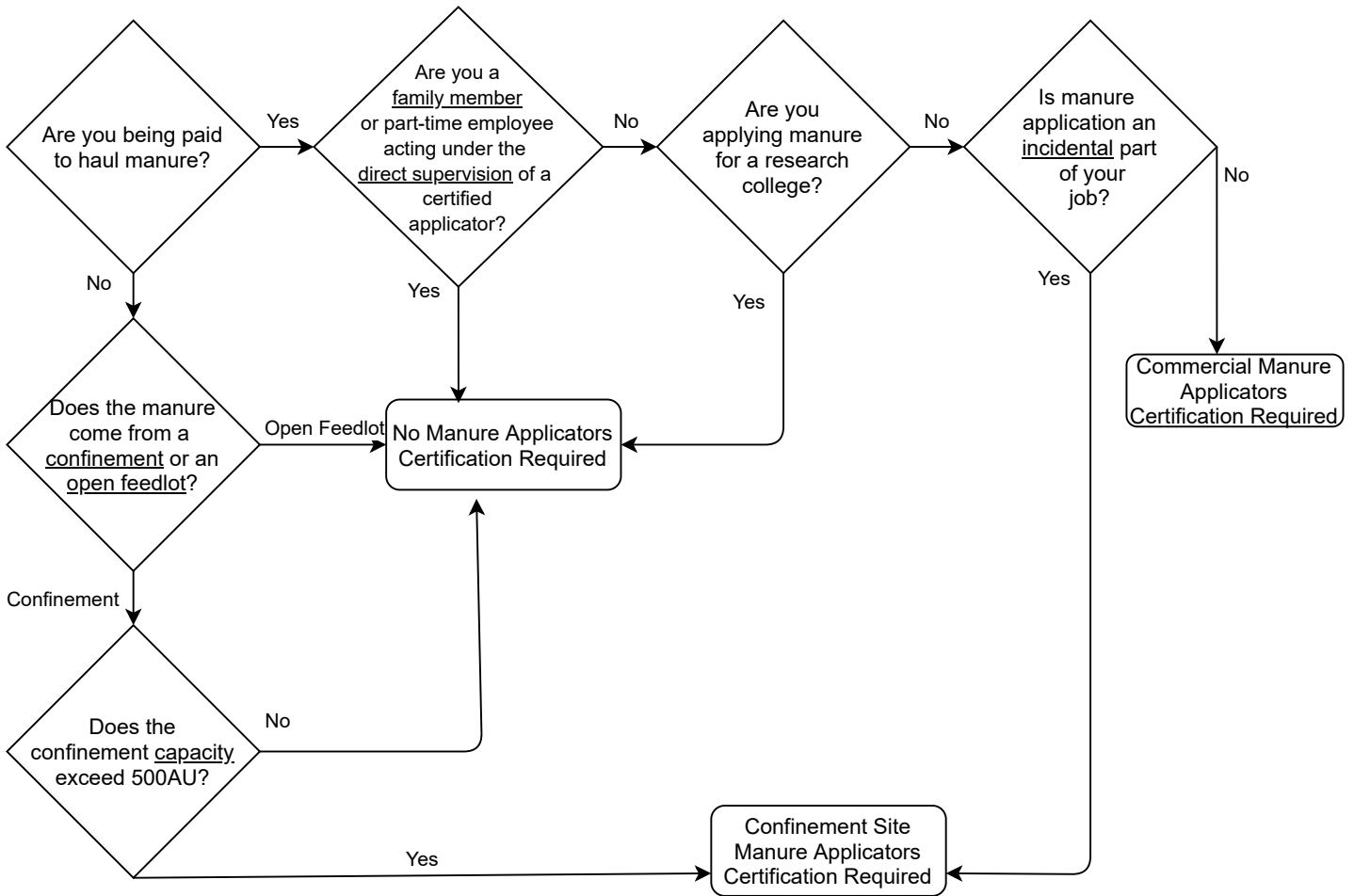


Do I need to be certified to transport, handle, or apply manure?



Unless exempted, certification is required for all persons involved in the handling (loading/pumping/agitation) and/or transportation of manure as well as the actual land application.

A "confinement" is a totally roofed animal feeding operation or a partially roofed animal feeding operation where the unroofed area is <10% of the roofed area.

An "open feedlot" is an unroofed animal feeding operation or partially roofed animal feeding operation where the unroofed area is at least 10% of the roofed area and no crop, vegetation, forage growth or residue is maintained.

A "family member" is defined as a person related to another person as a parent, grandparent, child, grandchild, sibling, or a spouse of such related person.

"Direct supervision" means that the supervising applicator is physically present at the site and can physically observe and communicate with the supervised person at all times.

A "research college" means an accredited public or private college or university that performs research or experimental activities regarding animal agriculture or agronomy.

"Incidental" means a duty which is secondary or subordinate to the primary job or function.

The "animal unit capacity" is calculated based on the maximum number of animals in the animal feeding operation at any one time.

- Cattle: Mature dairy cattle are 1.4 animal units per head. All other cattle are 1.0 unit per head.
- Swine: Animals over 55 lbs. are 0.4 units per head and those under 55 lbs. are 0.1 units per head.
- Chickens: Animals under 3 lbs. are 0.0025 units per head and those over 3 lbs. are 0.01 units per head.
- Turkeys: Animals under 7 lbs. are 0.0085 units per head and those over 7 lbs. are 0.018 units per head.

This document is not a complete interpretation of Iowa Administrative Code 567 Chapter 65 — Animal Feeding Operations. It is guidance and should not be used to replace administrative rules. While every effort has been made to assure the accuracy of this information, the administrative rules will prevail in the event of a conflict between this document and the administrative rules.

